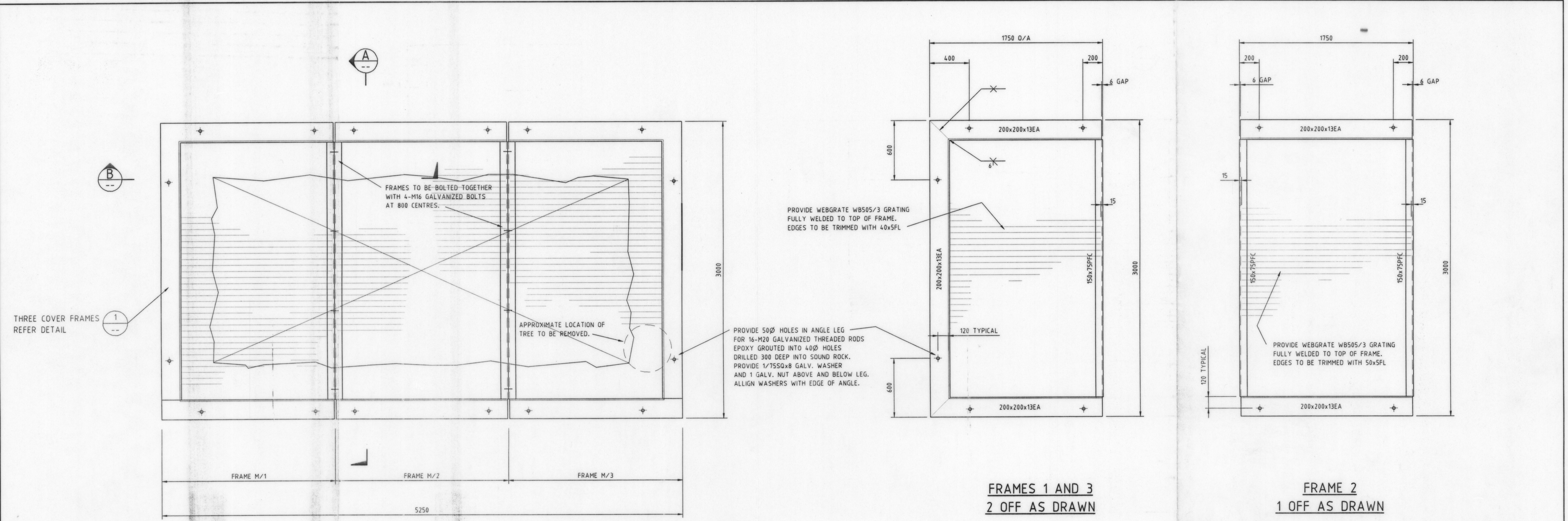


5845C

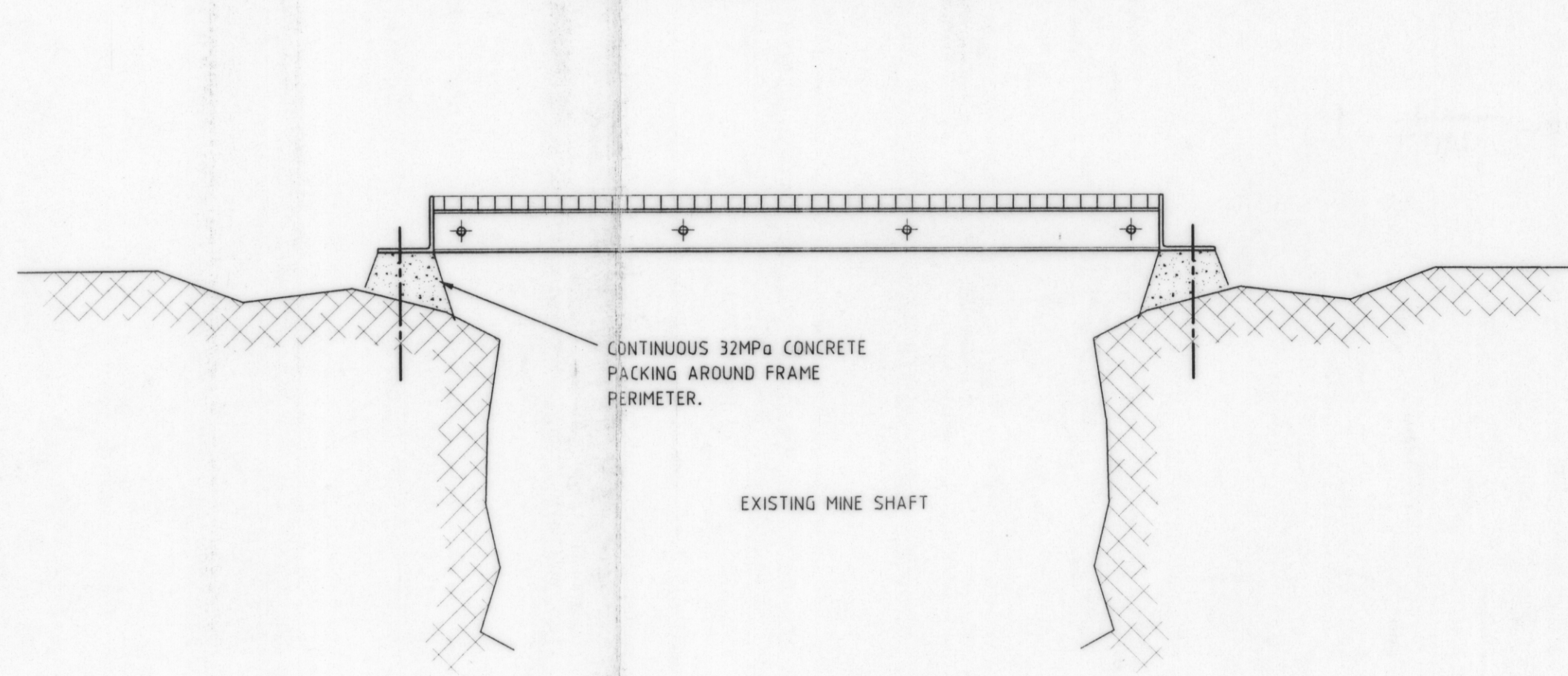
644

WORK DETAILS 3/3

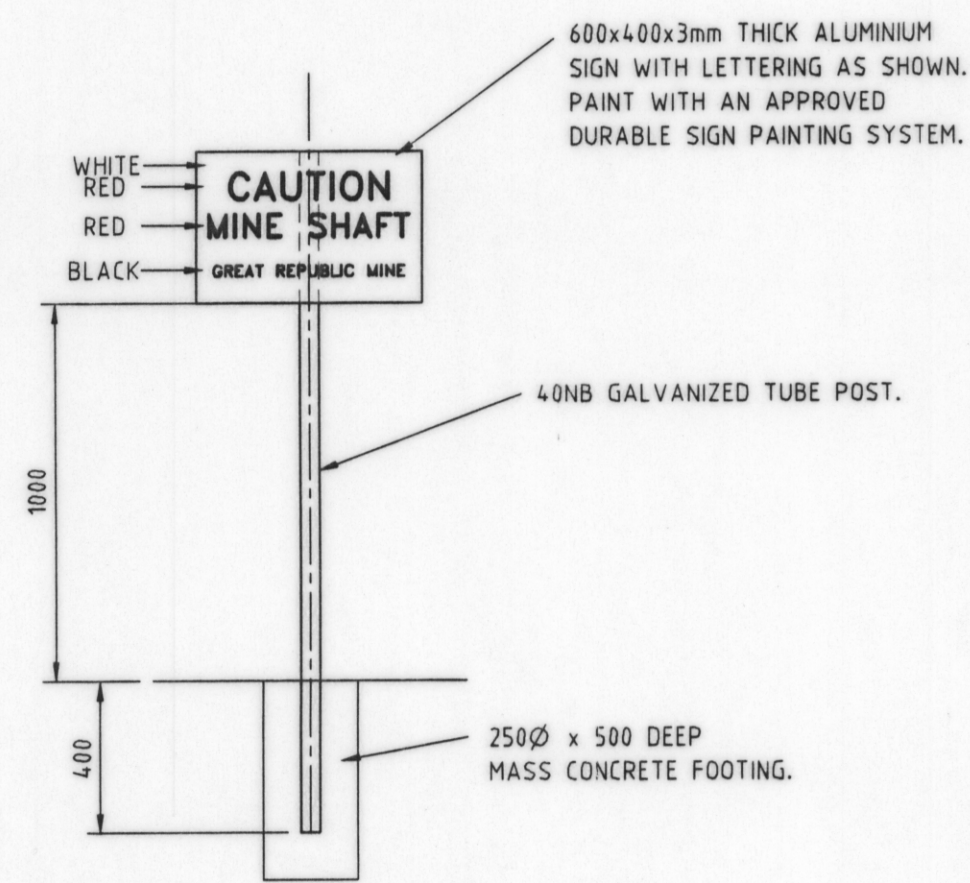
5 cm



SHAFT COVERS - PLAN
GREAT REPUBLIC MINE - MAIN SHAFT

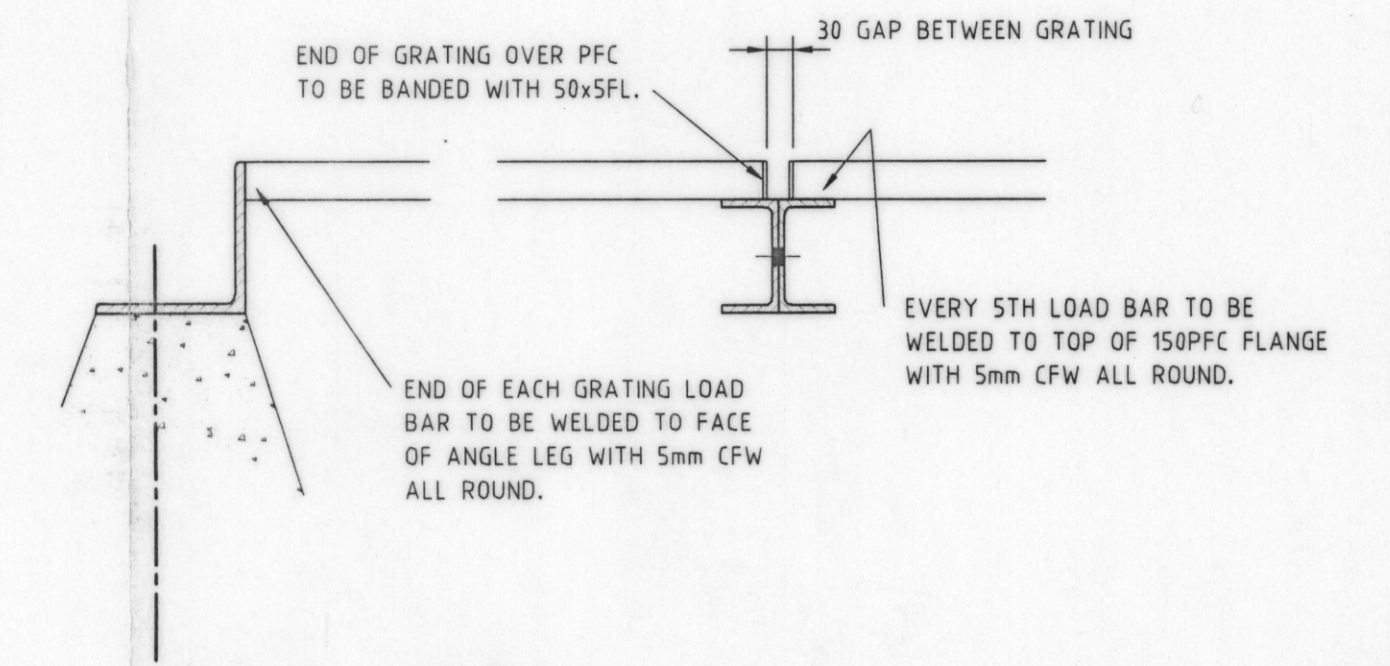


SECTION A



ANGER SIGN
SCALE 1:20

TO BE ERECTED IN CLEAR VIEW IMMEDIATELY IN FRONT OF ALL SHAFTS.



SECTION B
SCALE 1:10

NOTE:

1. CONCRETE STRENGTH - $F_c = 32MPa$ AT 28 DAYS.
2. ALL WELDS TO BE 6mm CFW UNLESS NOTED OTHERWISE.
3. ALL STEELWORK TO BE HOT DIP GALVANIZED AFTER FABRICATION.
4. ALL BOLTS TO BE GALVANIZED M12/4.6/5 UNLESS OTHERWISE NOTED.
5. ALL BOLTS TO BE WELL BURRED AFTER INSTALLATION.

Revisions	REV. No	Date	Description	Thompson & Brett Pty. Ltd. Consulting Engineers 6 Bayfield Street, Rosny Park. 7018 Phone (03) 6244 6633 Fax. (03) 6244 6221 E-mail: tb@trump.net.au	Design	RC	Date	APR '99	Scale	1:20	A1	Client & Project MINERAL RESOURCES TASMANIA GIPPS CREEK OPEN SHAFTS	Drawing Title	MINE SHAFT COVERS CONCRETE AND STEELWORK DETAILS - 3/3	
	Drawn	MFL	Date		APR '99	File	MINES-09	Design Check	Date	Controlled Document	Yes		No	Acad Name	183003
				The Association of Consulting Engineers Australia	Drawing Check	Date	Approved			Director	Geocomp No.	Drawing No.	99 - 1830 - 03	Rev.	