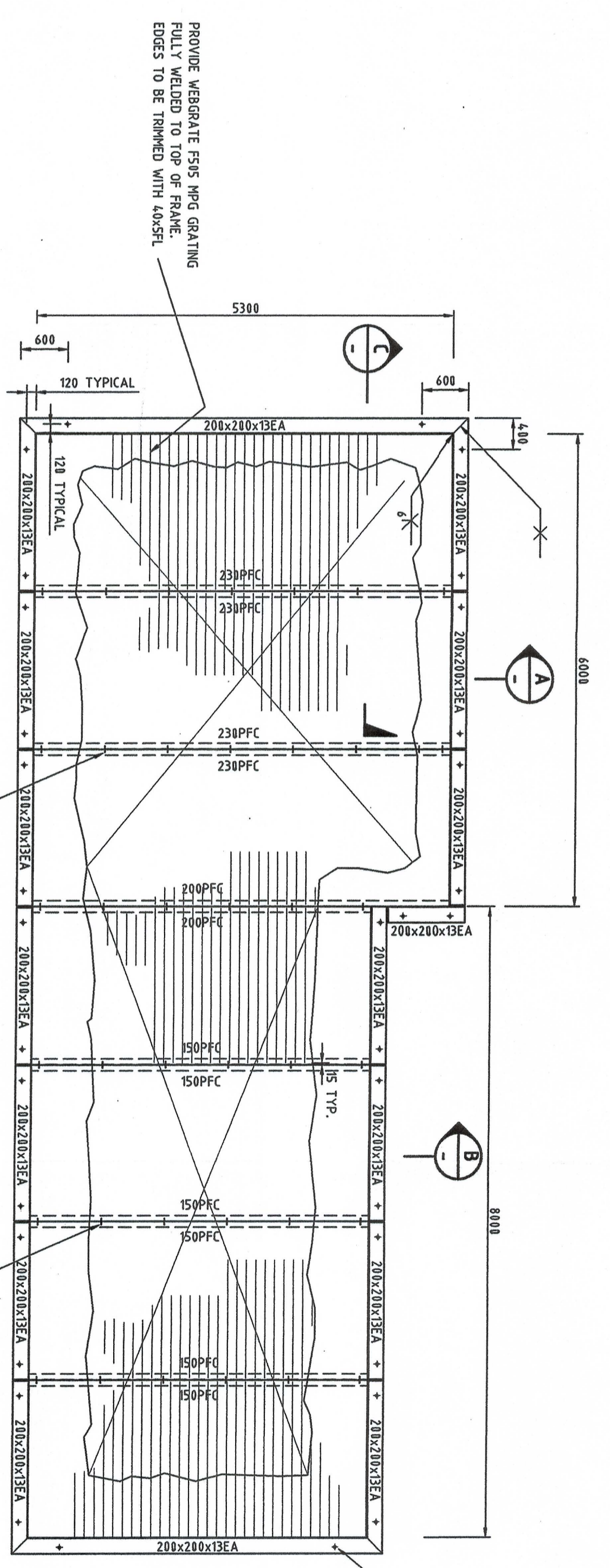
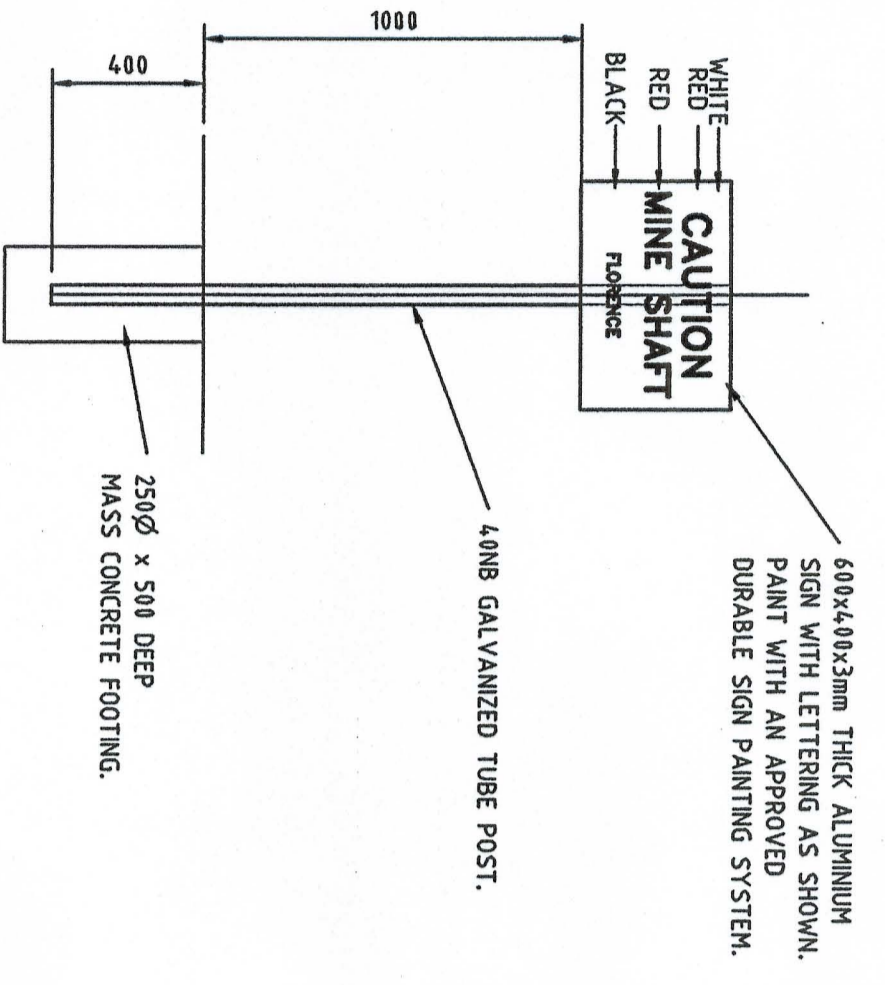


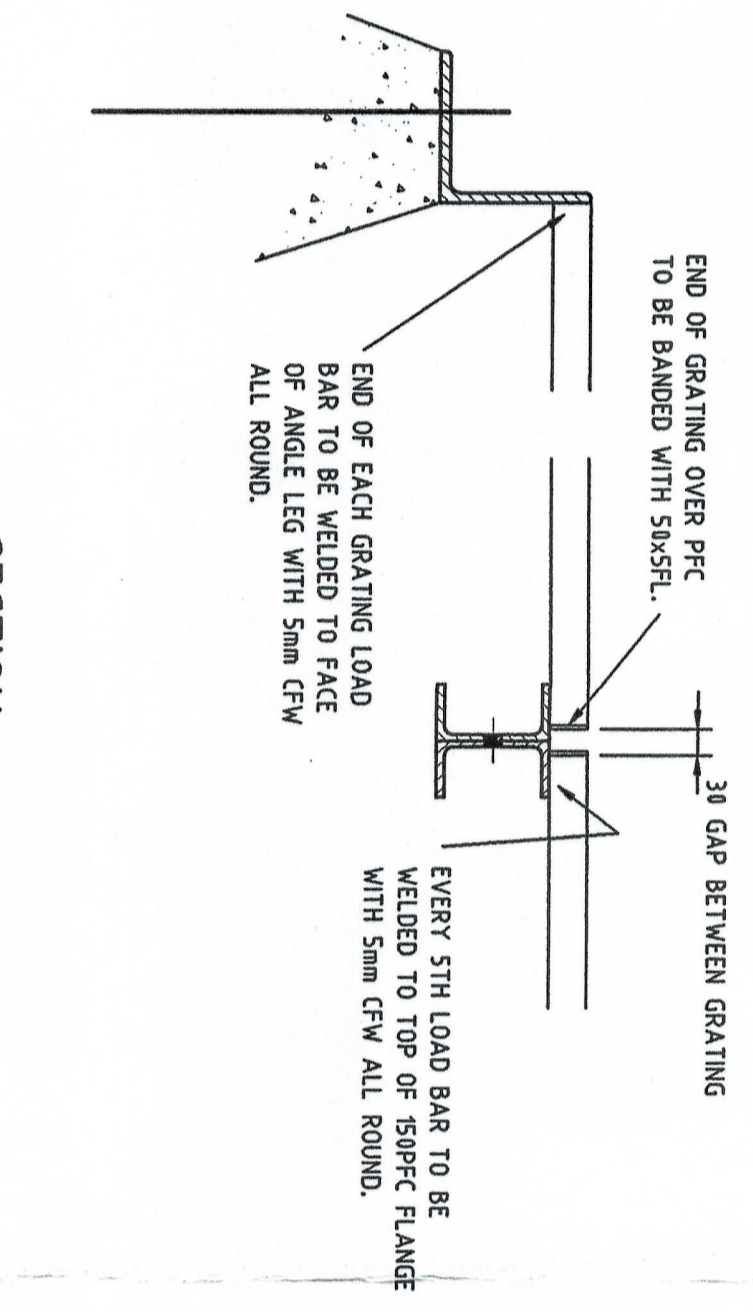
LOCALITY PLAN  
SCALE 1:20,000



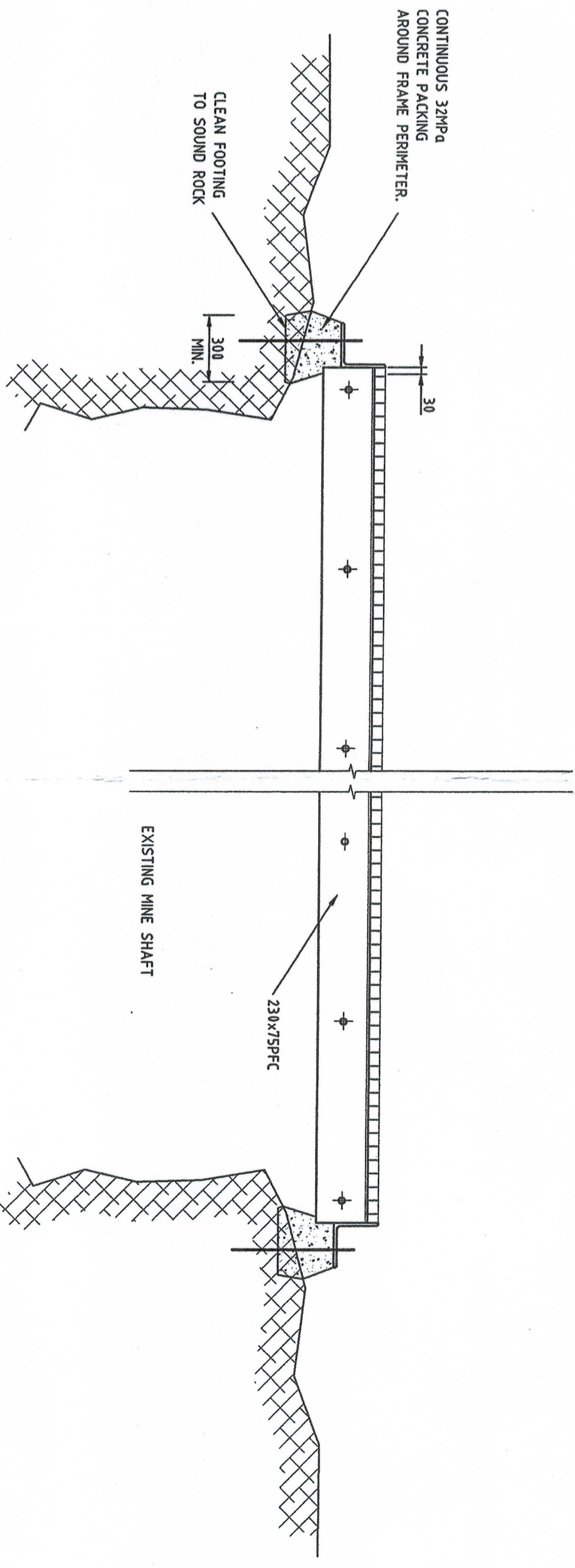
SHAFT COVERS - PLAN  
FLORENCE - MAIN SHAFT  
SCALE 1:50



CAUTION MINE SHAFT  
SCALE 1:20  
TO BE ERECTED IN CLEAR VIEW  
IMMEDIATELY IN FRONT OF ALL SHAFTS.



SECTION  
SCALE 1:10



SECTION A  
SCALE 1:20  
SECTION B  
SIMILAR

- NOTE:
1. CONCRETE STRENGTH - F<sub>c</sub> = 32MPa AT 28 DAYS.
  2. ALL WELDS TO BE 6mm UNLESS NOTED OTHERWISE.
  3. ALL STEELWORK TO BE HOT DIP GALVANIZED AFTER FABRICATION.
  4. ALL BOLTS TO BE GALVANIZED M12, M16, M20 UNLESS OTHERWISE NOTED.
  5. ALL BOLTS TO BE WELL BURRED AFTER INSTALLATION.

Revisions	REV. No	Date	Description
	P1	04-04-03	PRELIMINARY

Thompson & Brett Pty. Ltd.  
Consulting Engineers  
11 Boyfield Street,  
Rosny Park, 7018  
Phone (03) 6244 6633  
Fax (03) 6244 6221  
E-mail: info@thompsonandbrett.com.au

Design	Drawn	Date	Scale	File	Controlled Document	Yes	No
D.M.B.	N.T.	MAR 2003	AS SHOWN	MINE-S-14			
		APR. 2003					

Client & Project  
MINERAL RESOURCES TASMANIA  
FLORENCE MINE SHAFTS

Drawing Title	Issue	Drawing No.	Rev.
MINE SHAFT COVERS	PRELIMINARY	02-24-08-01	P1