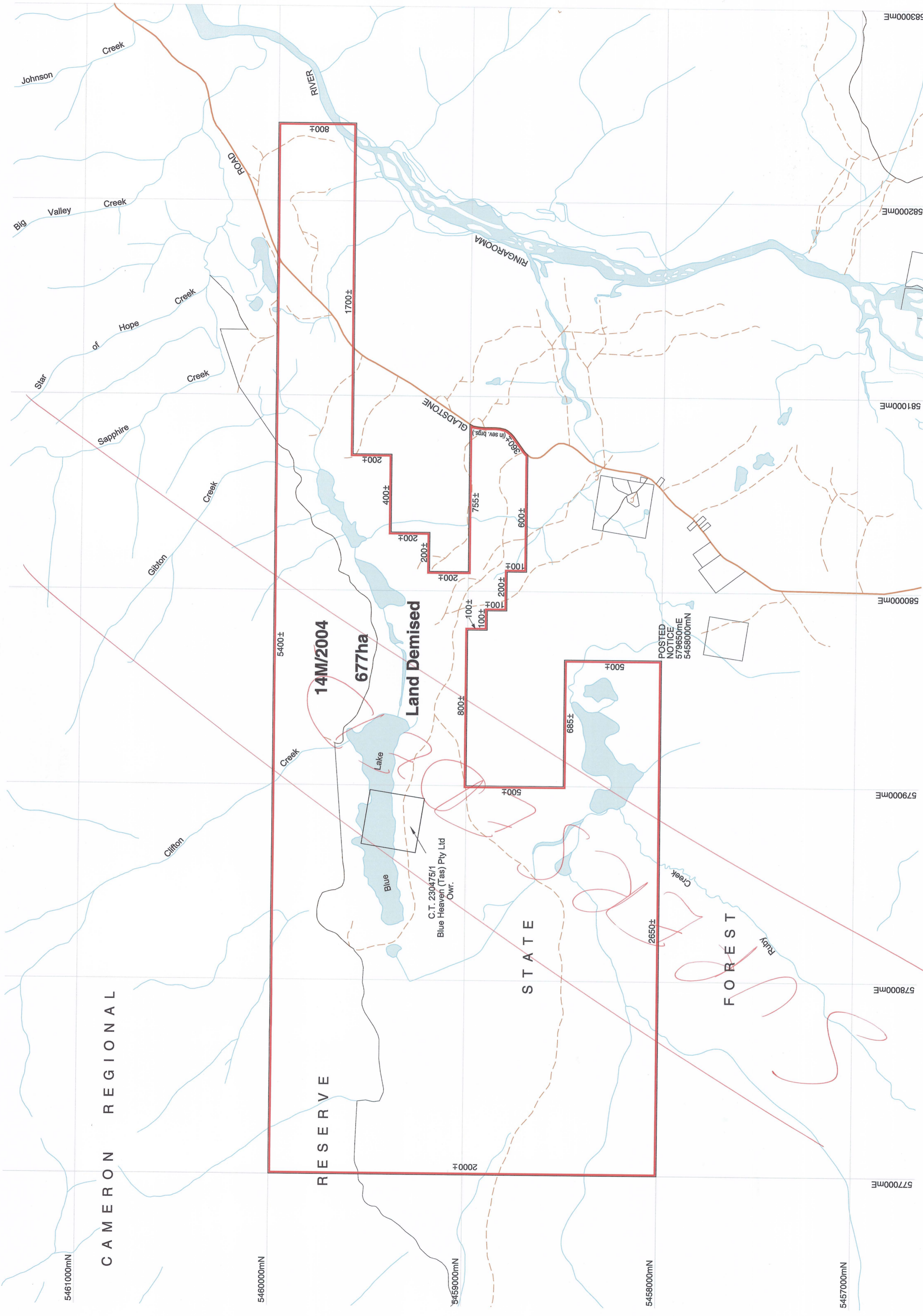


PLAN - SUBJECT TO SURVEY



Coordinate datum - AGD66 AMG Zone 55
MINERAL RESOURCES
TASMANIA

LAND DISTRICT	DORSET	VICINITY	SOUTH MOUNT CAMERON	MAP	PIONEER 1:20000	AREA	677ha	SCALE	1:12500
MUNICIPALITY	DORSET	DRAWN	<i>A. Holfick</i>	EXAMINED	<i>[Signature]</i>			DATE	23.9.2005
APPLICATION NO.	14M/2004	APPROVED		DIRECTOR OF MINES	<i>[Signature]</i>			DATE	26.9.2005
APPLICANT	VAN DIEMAN MINES PTY LTD								



MINERAL RESOURCES TASMANIA - DATA MANAGEMENT BRANCH