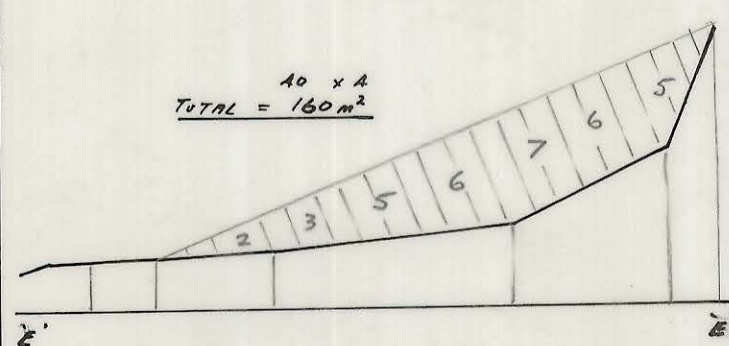
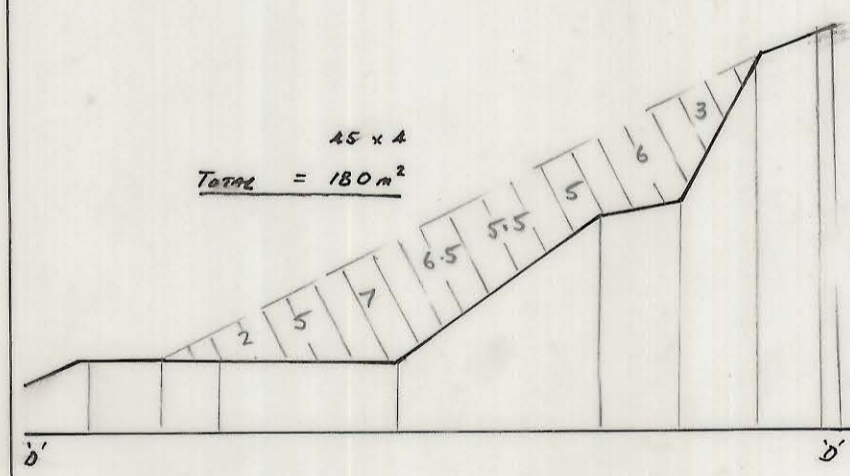
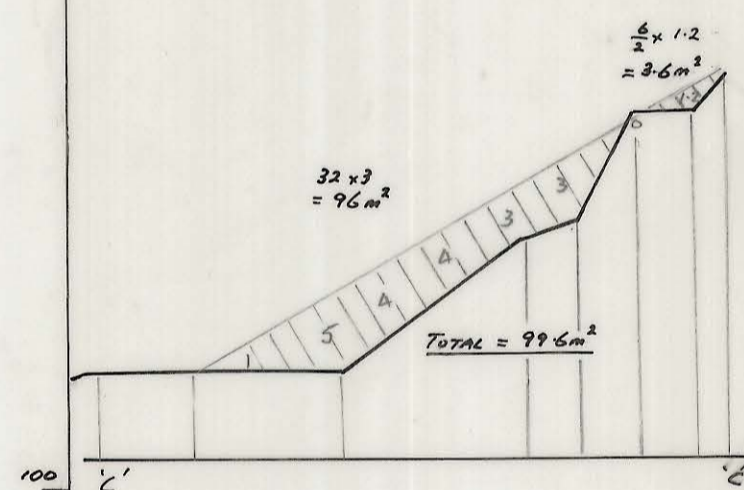
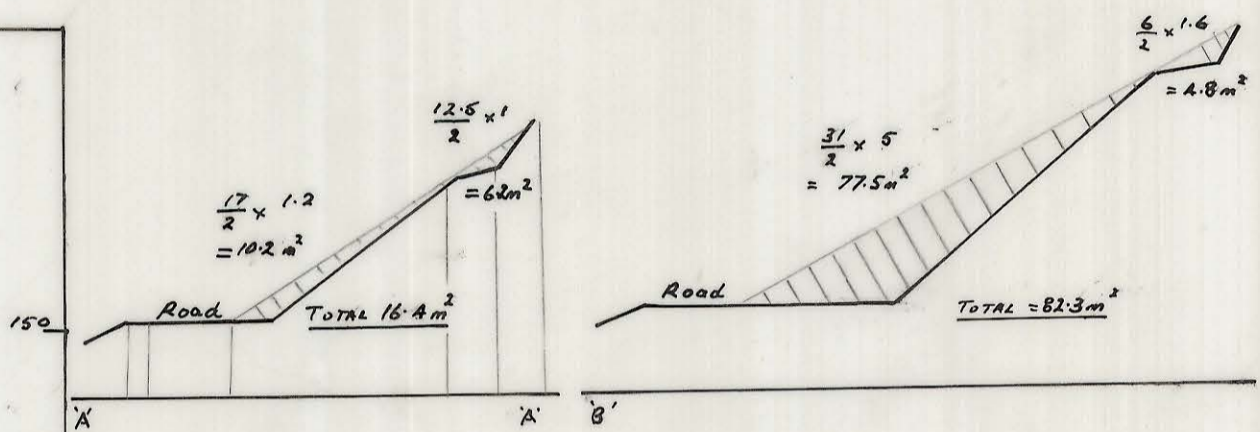
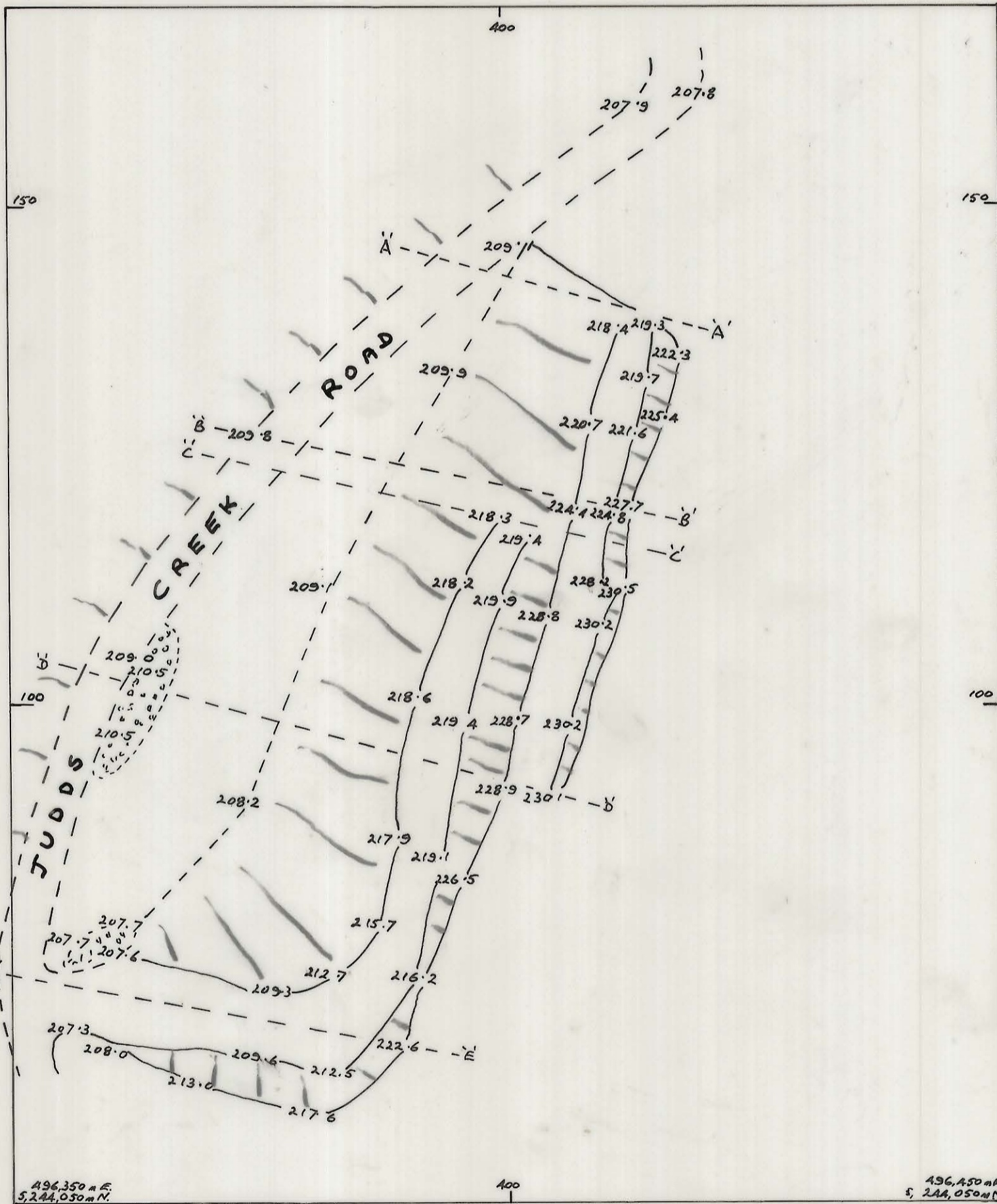


S. 145.

6315

HUONVILLE COUNCIL QUARRY
MAY 1993

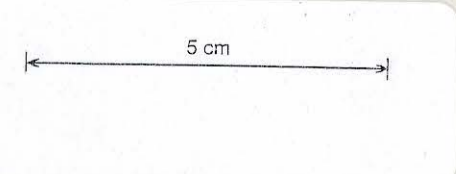


TOTAL EXTRACTION =	16.4	16
	82.3	31
	99.6	31
	180.0	180
	160.0	160
	A 44.7 m ²	
	MEAN = 112 m ²	

APPROX. TOTAL VOLUME = $85 \times 112 = 9520 \text{ m}^3$

MINES DEPT.
S. 145

HUONVILLE COUNCIL QUARRY
JUDDS CREEK ROAD
Scale 1:500
11 MAY 1993



6315