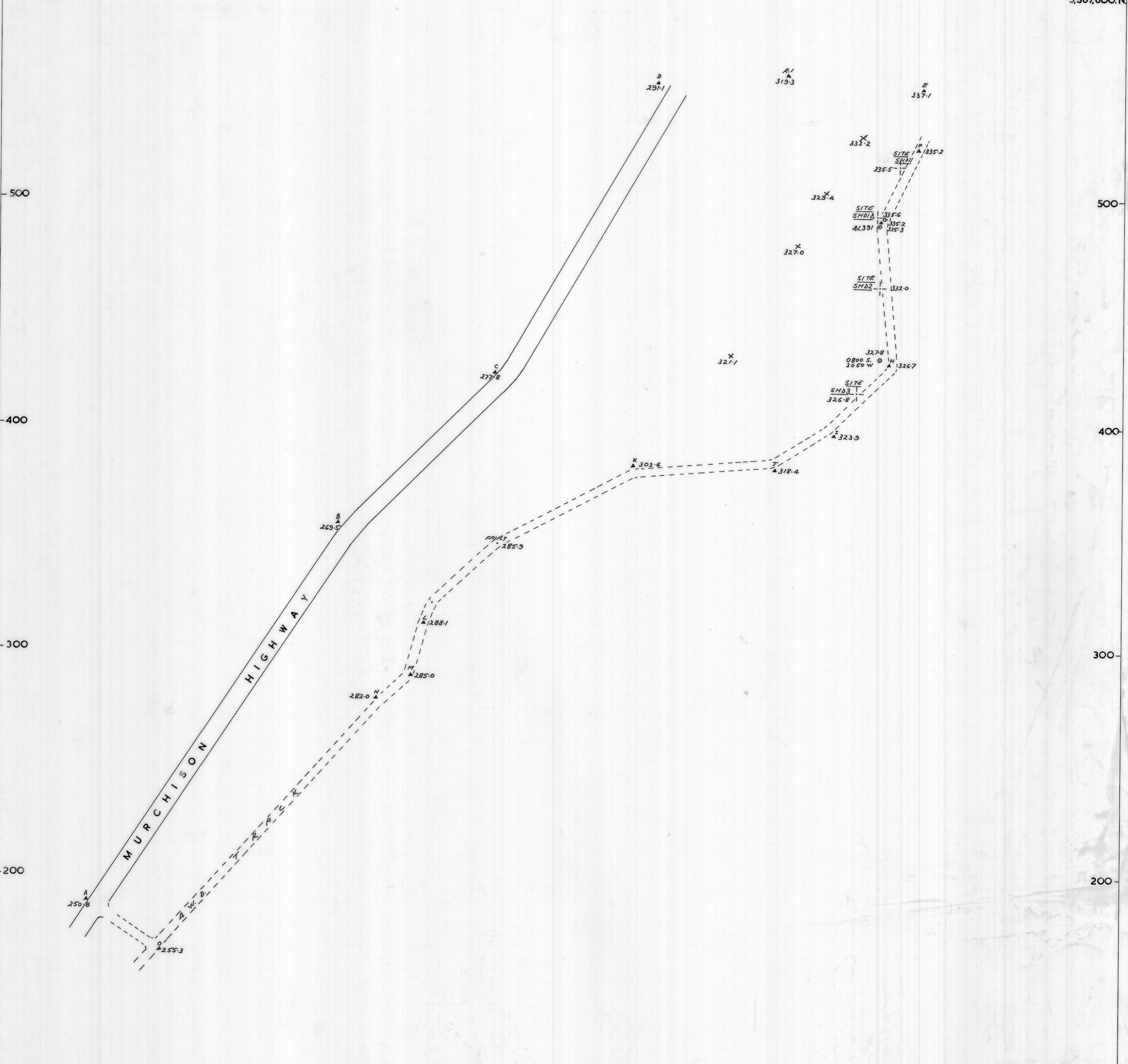


367,900m.E. 368,000 100 200 300 368,400m.E.
5,367,600m.N. 5,367,100m.N.



367,900m.E. 368,000 100 200 300 368,400m.E.
5,367,100m.N. 5,367,100m.N.

MINES DEPT.
S. 127

SERPENTINE HILL
SCALE - 1:1000
JAN. - 1988

