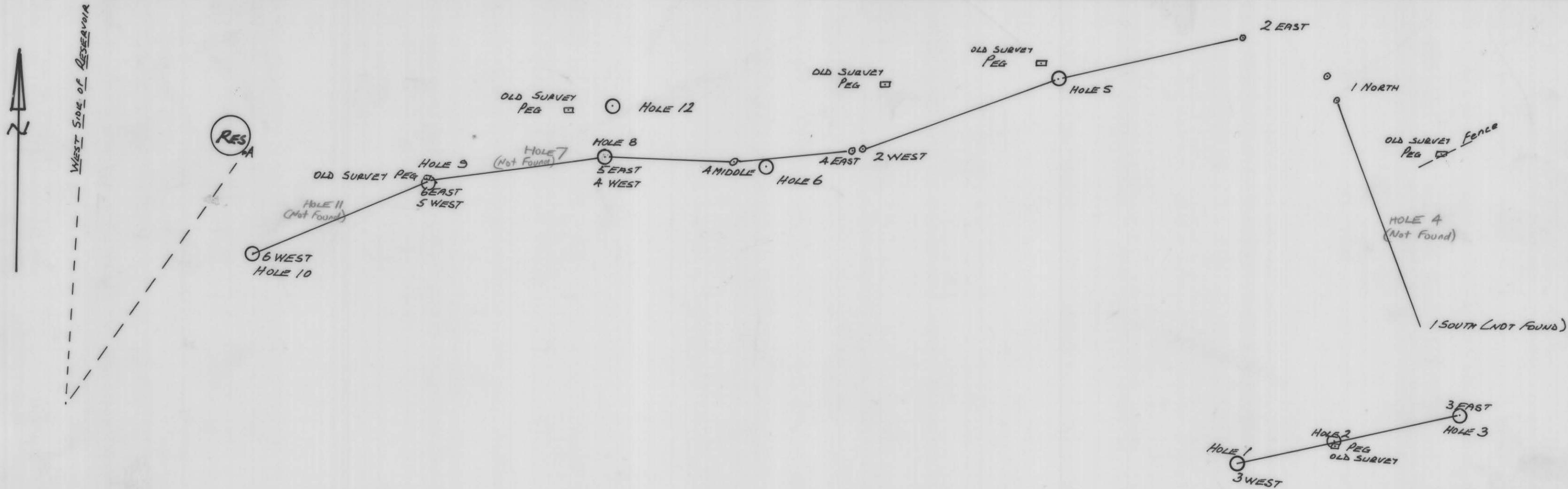


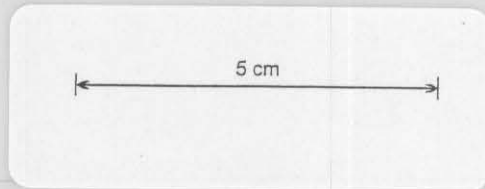
S. 101
1978



SURVEY BY G. BENN, SURVEYOR MINES DEPT.

WESTERN END OF TRAVERSE TIED TO RESERVOIR ('A')
EASTERN END TO EXISTING SURVEY PEGS ASSUMED TO BE
ASSOCIATED WITH PRIVATE SURVEY 375 & RISING MAIN (?)
∴ EASTERN TIE ONLY APPROX.

ROCHERLEA PROPOSED RESERVOIR SITE
Scale 1:2000
DEC. 1978



6369

MINES DEPT.