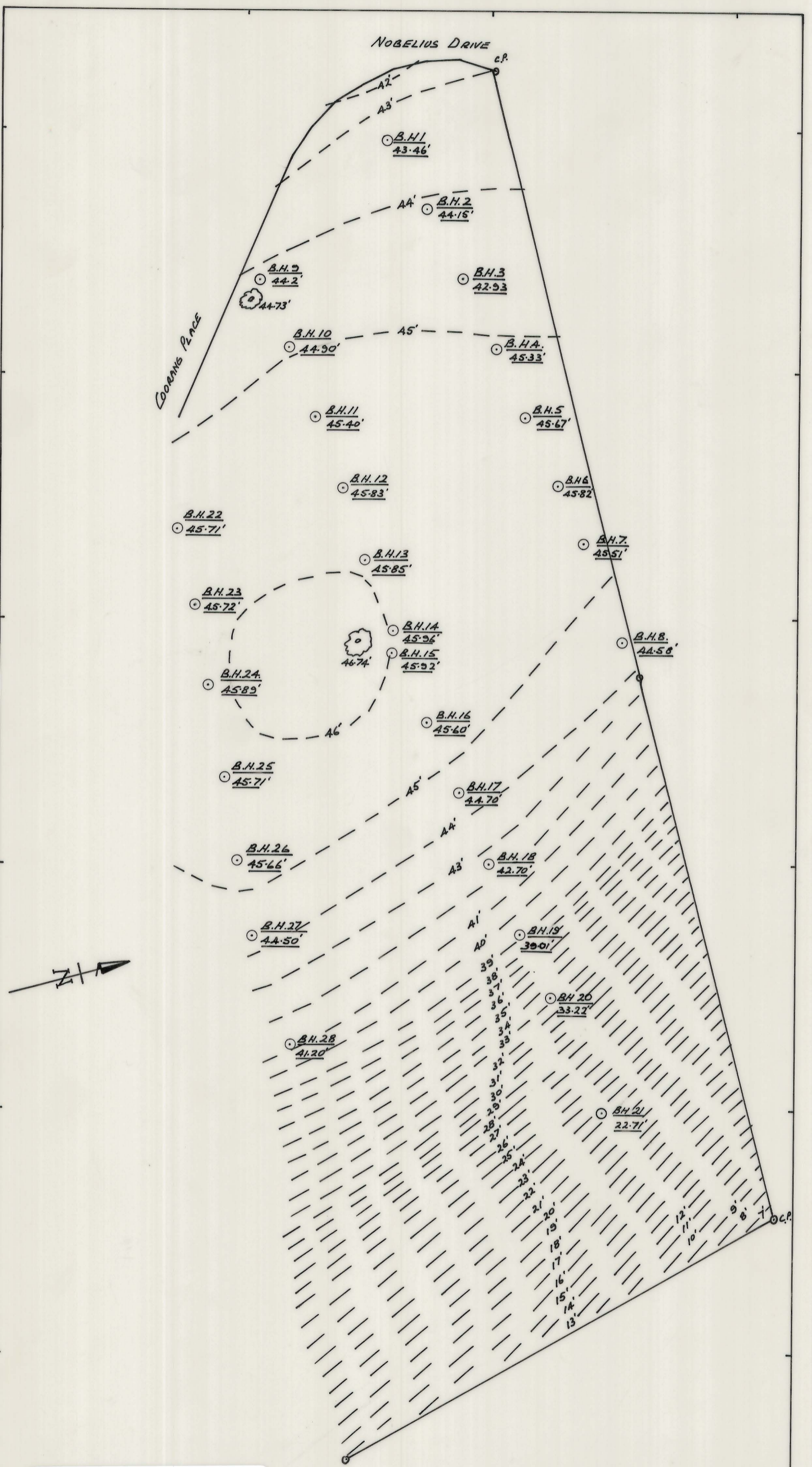


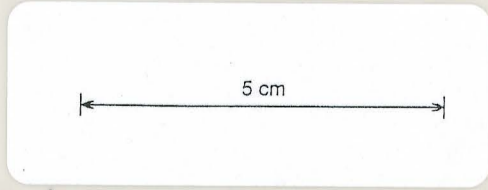
6.76

S.72

6419



6419



MINES DEPT.  
 TACHEOMETRIC SURVEY BY G. BENN  
 LEVEL DATUM - ARBITRARY (FEET)

FRESHWATER POINT - WEST TAMAR  
 LOT 1A NOBELIUS DRIVE  
 JUNE 1976  
 SCALE 40 FEET TO 1 INCH