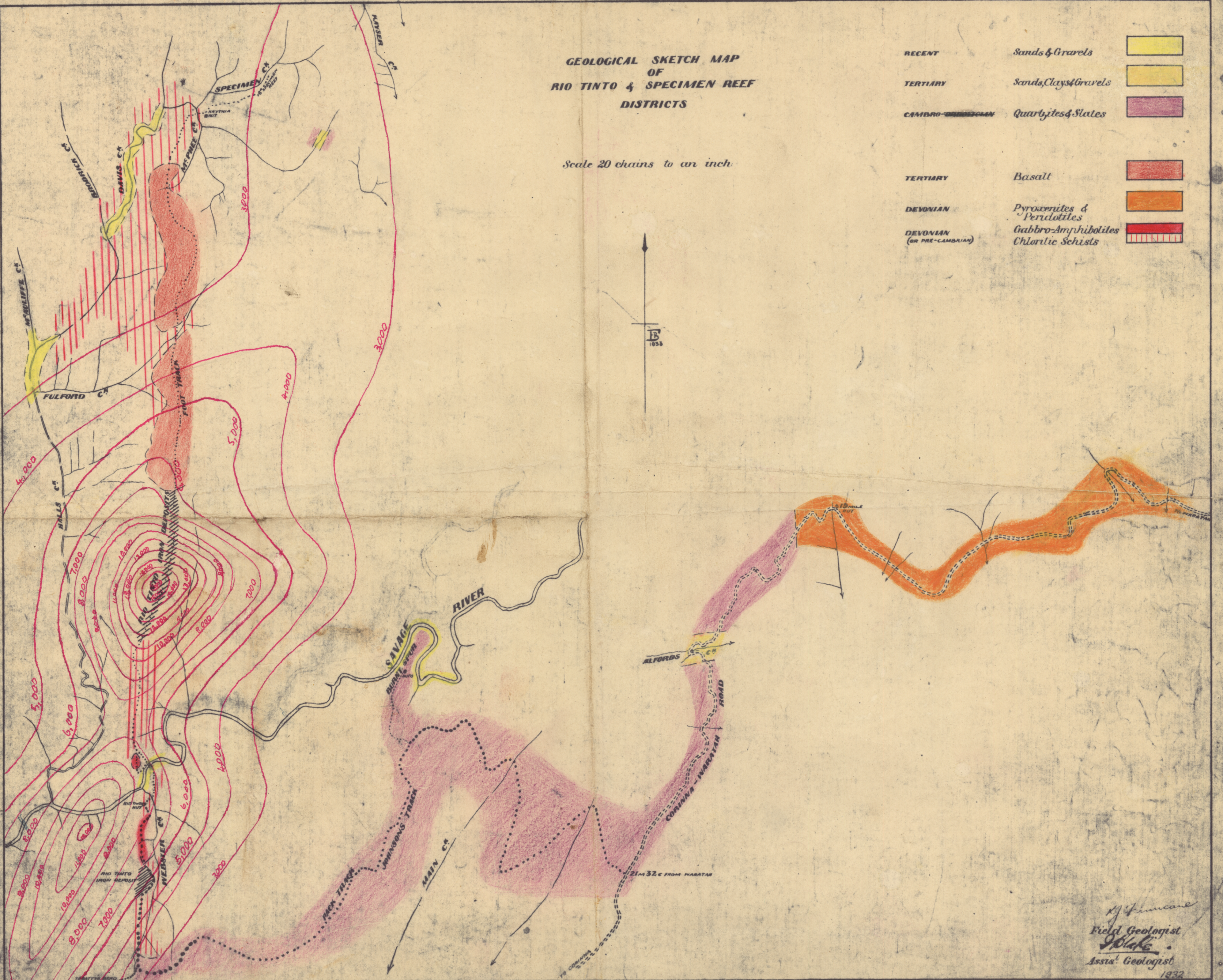


GEOLOGICAL SKETCH MAP OF RIO TINTO & SPECIMEN REEF DISTRICTS

Scale 20 chains to an inch

RECENT	Sands & Gravels	
TERTIARY	Sands, Clays & Gravels	
CAMBRO-SILURIAN	Quartzites & Slates	
TERTIARY	Basalt	
DEVONIAN	Pyroxenites & Peridotites	
DEVONIAN (OR PRE-CAMBRIAN)	Gabbro-Amphibolites Chloritic Schists	



H. Finucane
 Field Geologist
H. Blake
 Assis. Geologist
 1832