

66 L A

236

5 cm

GEOLOGICAL SURVEY OF TASMANIA

COAL RESOURCES PUBLICATION

PLATE XXV.

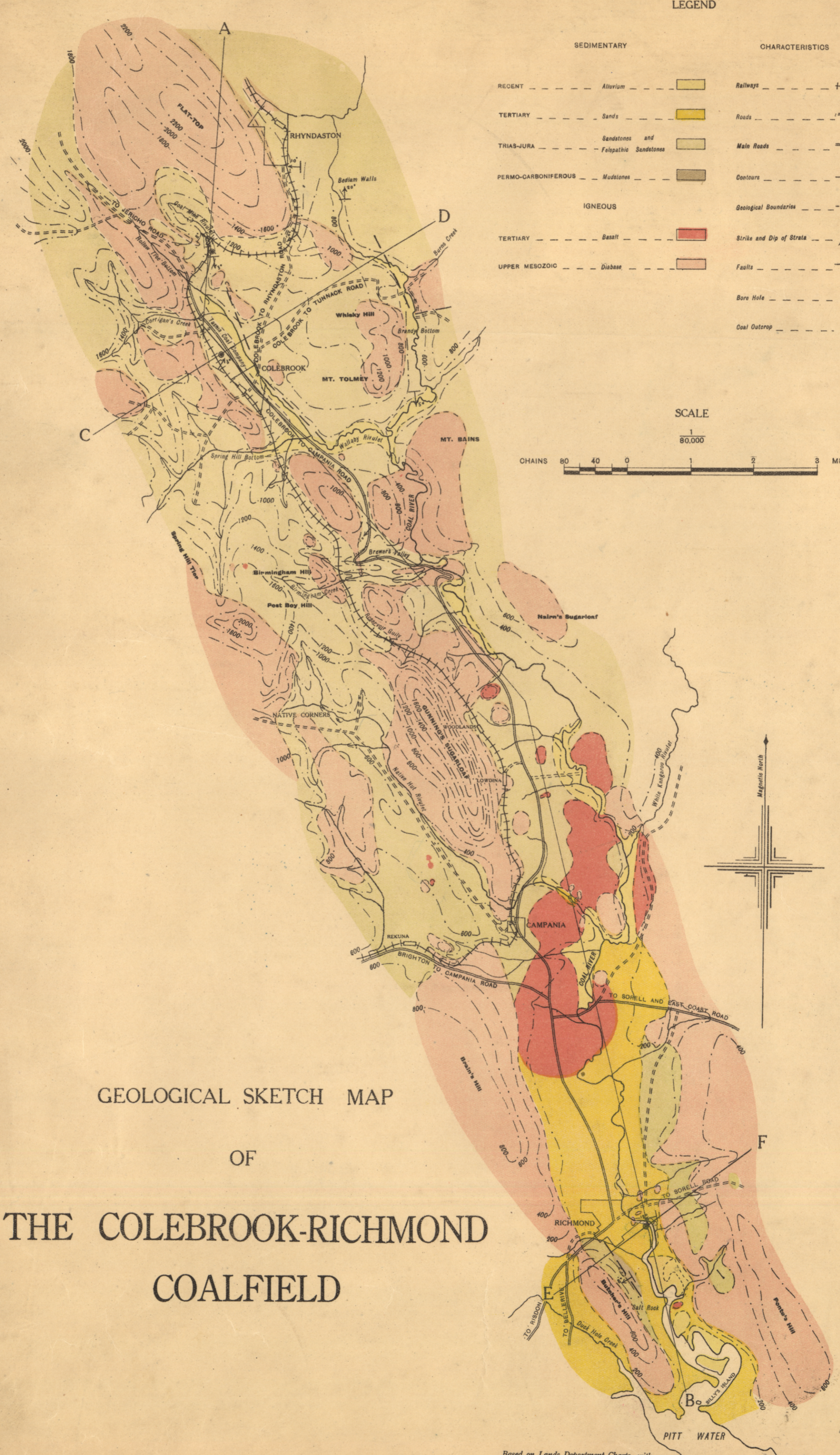
LEGEND

SEDIMENTARY		CHARACTERISTICS	
RECENT	Alluvium		Railways
TERTIARY	Sands		Roads
TRIAS-JURA	Sandstones and Felspathic Sandstones		Main Roads
PERMO-CARBONIFEROUS	Mudstones		Contours
IGNEOUS		Geological Boundaries	
TERTIARY	Basalt		Strike and Dip of Strata
UPPER MESOZOIC	Diabase		Faults
			Bore Hole
			Coal Outcrop

SCALE

1/80,000

CHAINS 80 40 0 1 2 3 MILES



GEOLOGICAL SKETCH MAP

OF

THE COLEBROOK-RICHMOND
COALFIELD

Based on Lands Department Charts, with
additions and corrections by P. B. Nye.
Topography and Geology by P. B. Nye.

G.J.E.

Photo Engraved by John Veil Government Printer Hobart, Tasmania.

66L/75