

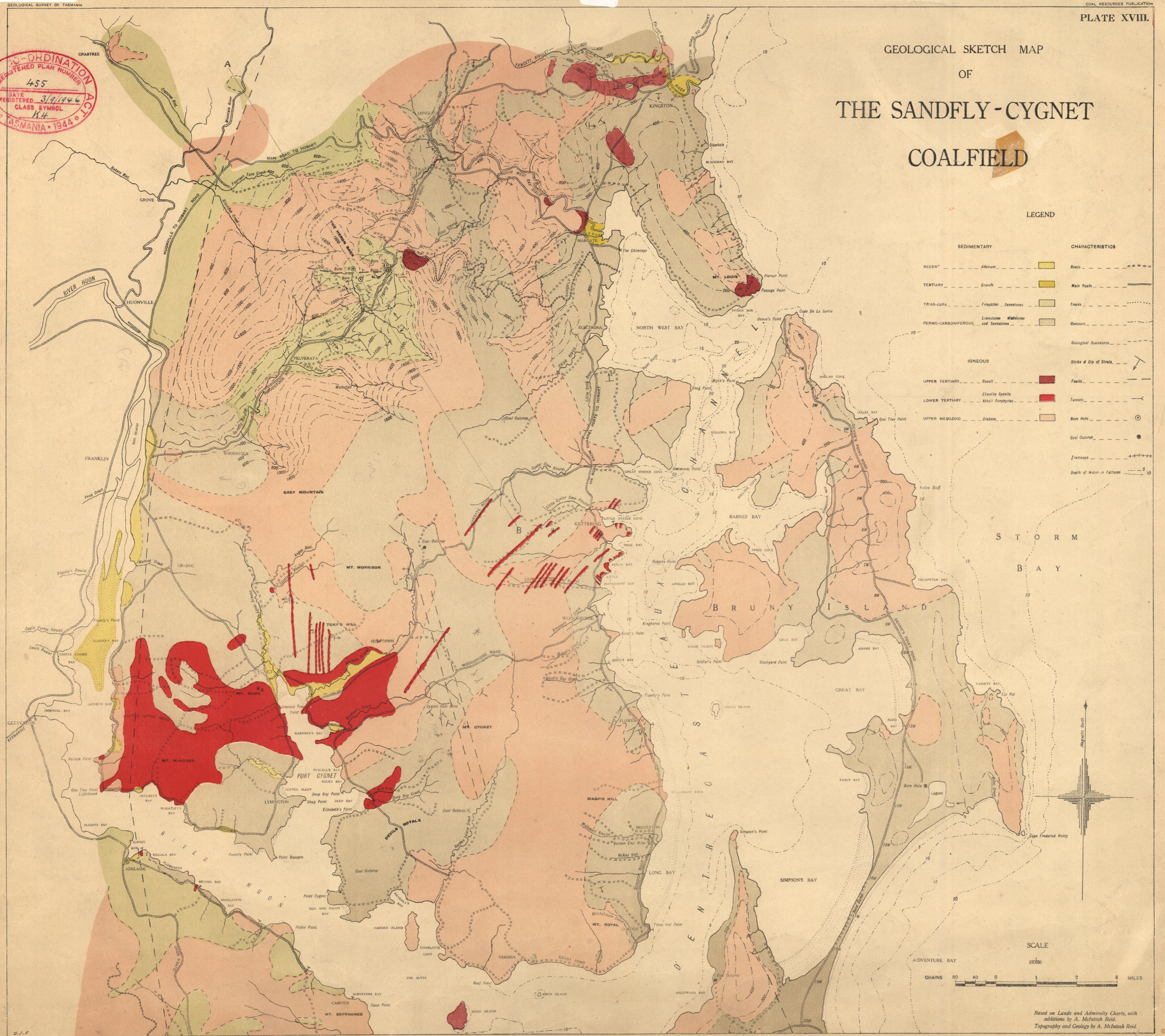
5 cm

SURVEY OF TASMANIA
 CO-ORDINATION
 REGISTERED PLAN NUMBER
 455
 DATE REGISTERED 3/9/1946
 CLASS SYMBOL
 K4
 TASMANIA 1944

GEOLOGICAL SKETCH MAP
 OF
**THE SANDFLY-CYGNET
 COALFIELD**

LEGEND

SEDIMENTARY		CHARACTERISTICS	
RECENT	Alluvium	Yellow	Roads
TERTIARY	Gravel	Light Yellow	Main Roads
TRIAS-JURA	Fine-grained Sandstones	Light Green	Tracks
PERMO-CARBONIFEROUS	Limestones, Sandstones and Shales	Light Brown	Contours
IGNEOUS			Geological Boundaries
UPPER TERTIARY	Basalt	Dark Red	Strike & Dip of Strata
LOWER TERTIARY	Alkaline Granite	Red	Faults
UPPER MESOZOIC	Diorite	Light Red	Tunnels
			Bore Hole
			Coal Outcrop
			Tramways
			Depth of Water in Fathoms



66C/88

Based on Lands and Admiralty Charts, with additions by A. McIntosh Reid. Topography and Geology by A. McIntosh Reid.
 Photo Aerials by John Vail Government Printer, Hobart, Tasmania.