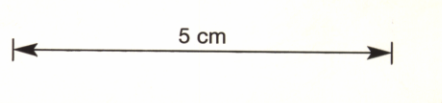


66F A

226



GEOLOGICAL SURVEY OF TASMANIA

COAL RESOURCES PUBLICATION

PLATE XXX.

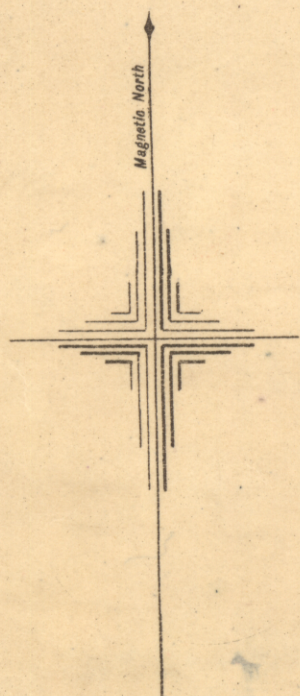
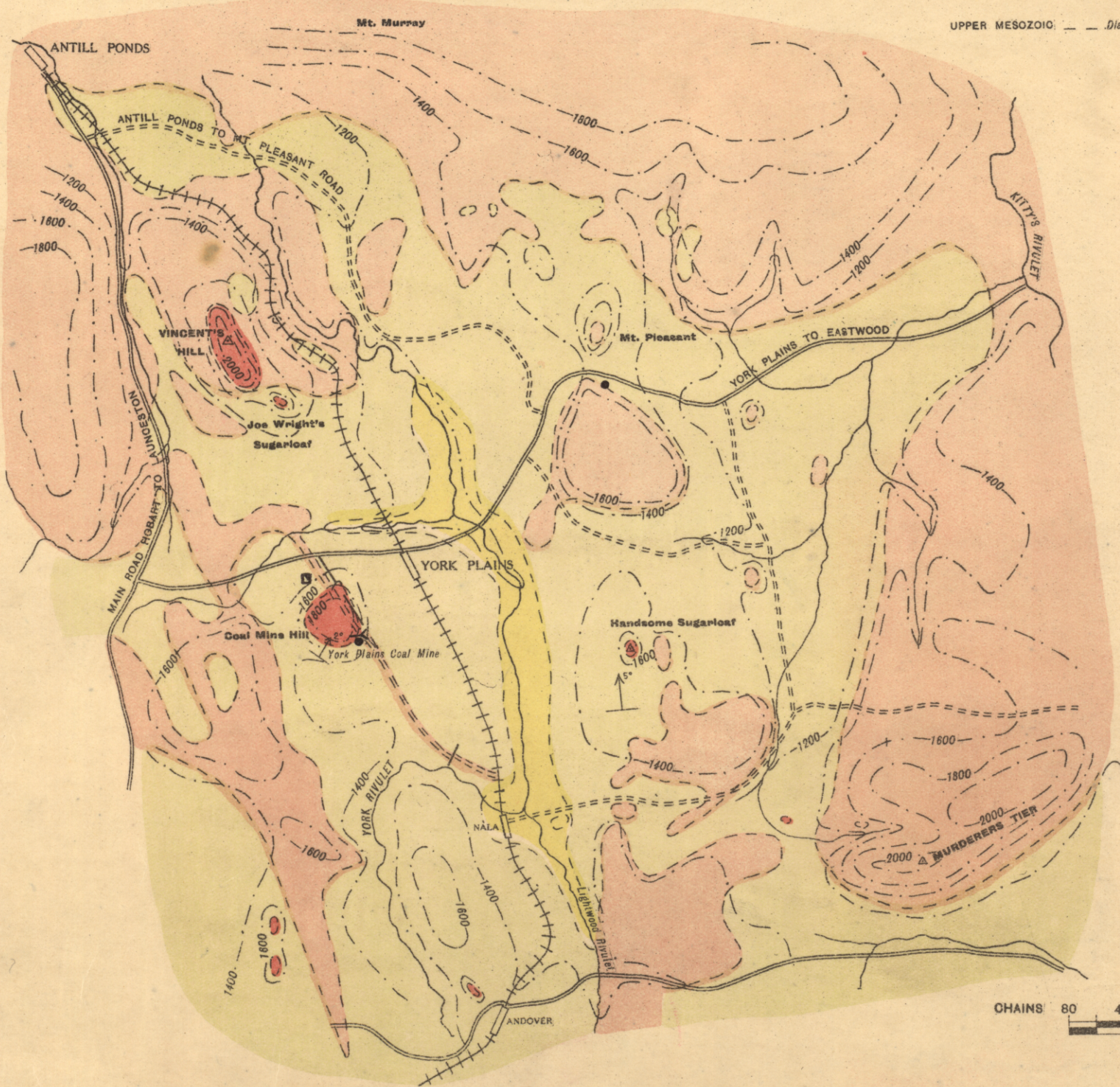
GEOLOGICAL SKETCH MAP

OF

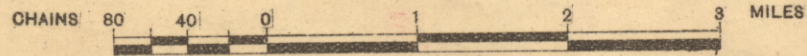
THE YORK PLAINS COALFIELD

LEGEND

SEDIMENTARY		CHARACTERISTICS
RECENT	Alluvium	Railways
TRIAS-JURA	Sandstones and Felspathic Sandstones	Main Roads
IGNEOUS		Roads
TERTIARY	Basalt	Contours
UPPER MESOZOIC	Diabase	Geological Boundaries
		Strike and Dip of Strata
		Faults
		Tunnels
		Coal Outcrop
		Trig. Stns.
		Shaft



SCALE
1/80,000



Based on Lands Chart, with additions by P. B. Nye.
Topography and Geology by P. B. Nye.

Photo Aerygraphed by John Vail Government Printer Hobart Tasmania.

G.J.E.

66F/68