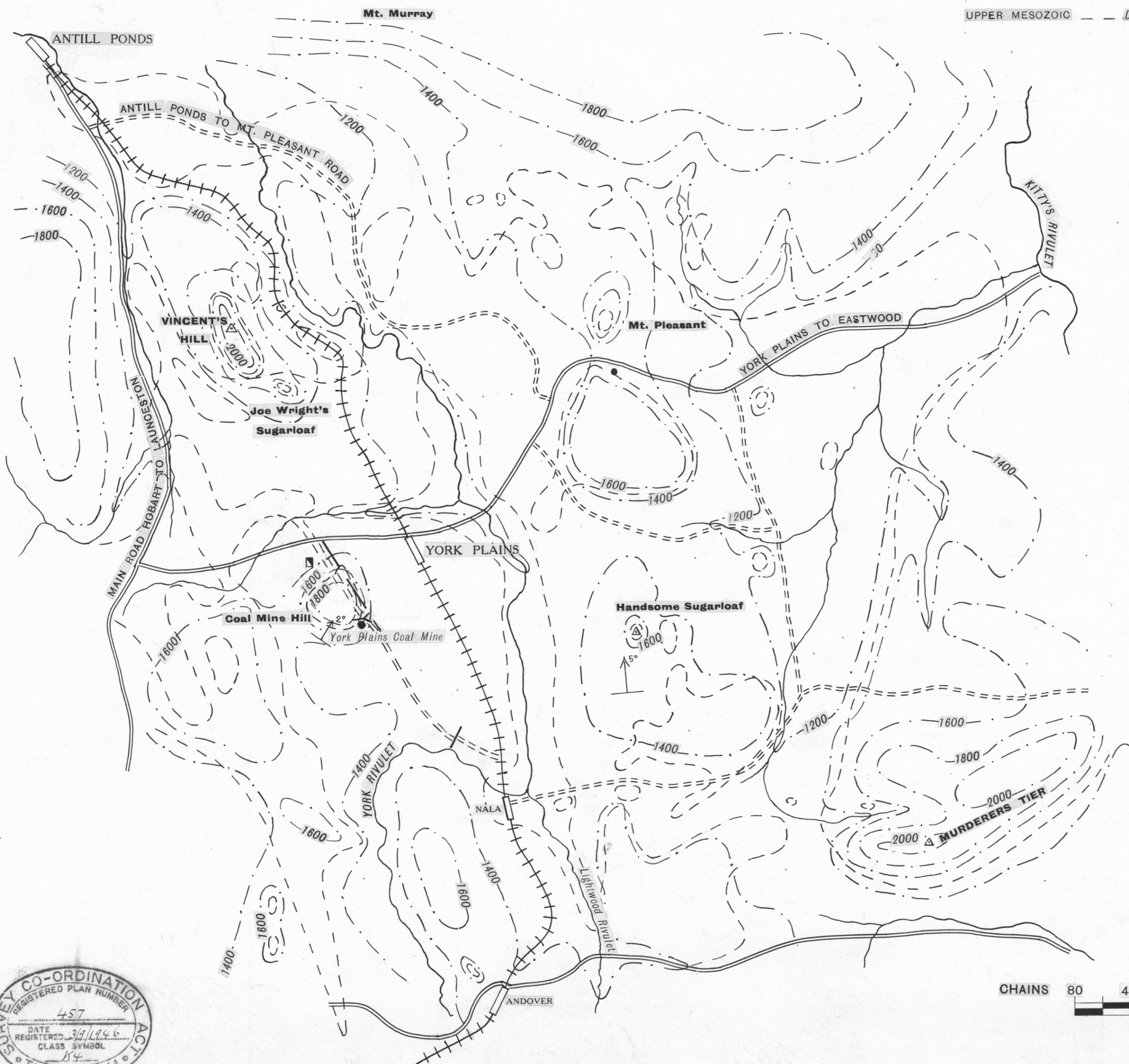


GEOLOGICAL SKETCH MAP
OF
**THE YORK PLAINS
COALFIELD**

LEGEND

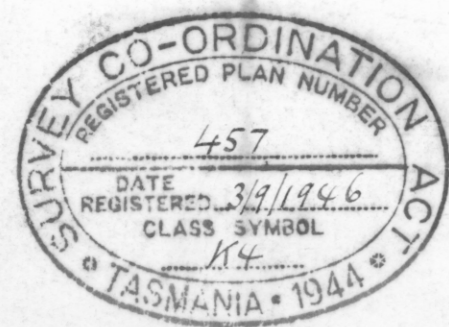
SEDIMENTARY		CHARACTERISTICS
RECENT	Alluvium	Railways
TRIAS-JURA	Sandstones and Felspathic Sandstones	Main Roads
IGNEOUS		Roads
TERTIARY	Basalt	Contours
UPPER MESOZOIC	Diabase	Geological Boundaries
		Strike and Dip of Strata
		Faults
		Tunnels
		Coal Outcrop
		Trig. Stns.
		Shaft



SCALE
1
80,000

CHAINS 80 40 0 1 2 3 MILES

Based on Lands Chart, with additions by P. B. Nye.
Topography and Geology by P. B. Nye.



G.J.E

66F/68

To be reduced so that this line measures 8 inches

P.B. Nye, Geologist
Based on Lands Chart with additions by P.B. Nye.
Topography and Geology by P.B. Nye.