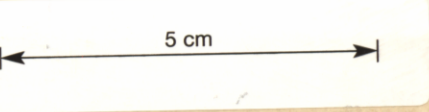




242

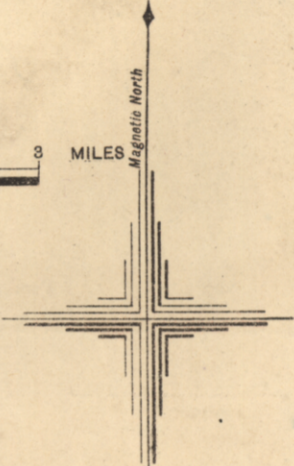
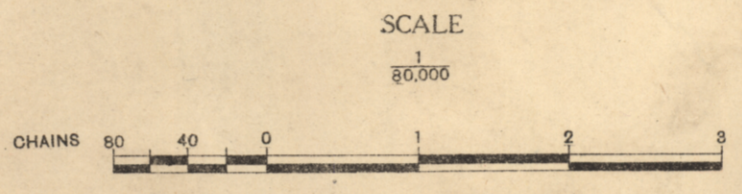


GEOLOGICAL SURVEY OF TASMANIA

COAL RESOURCES PUBLICATION

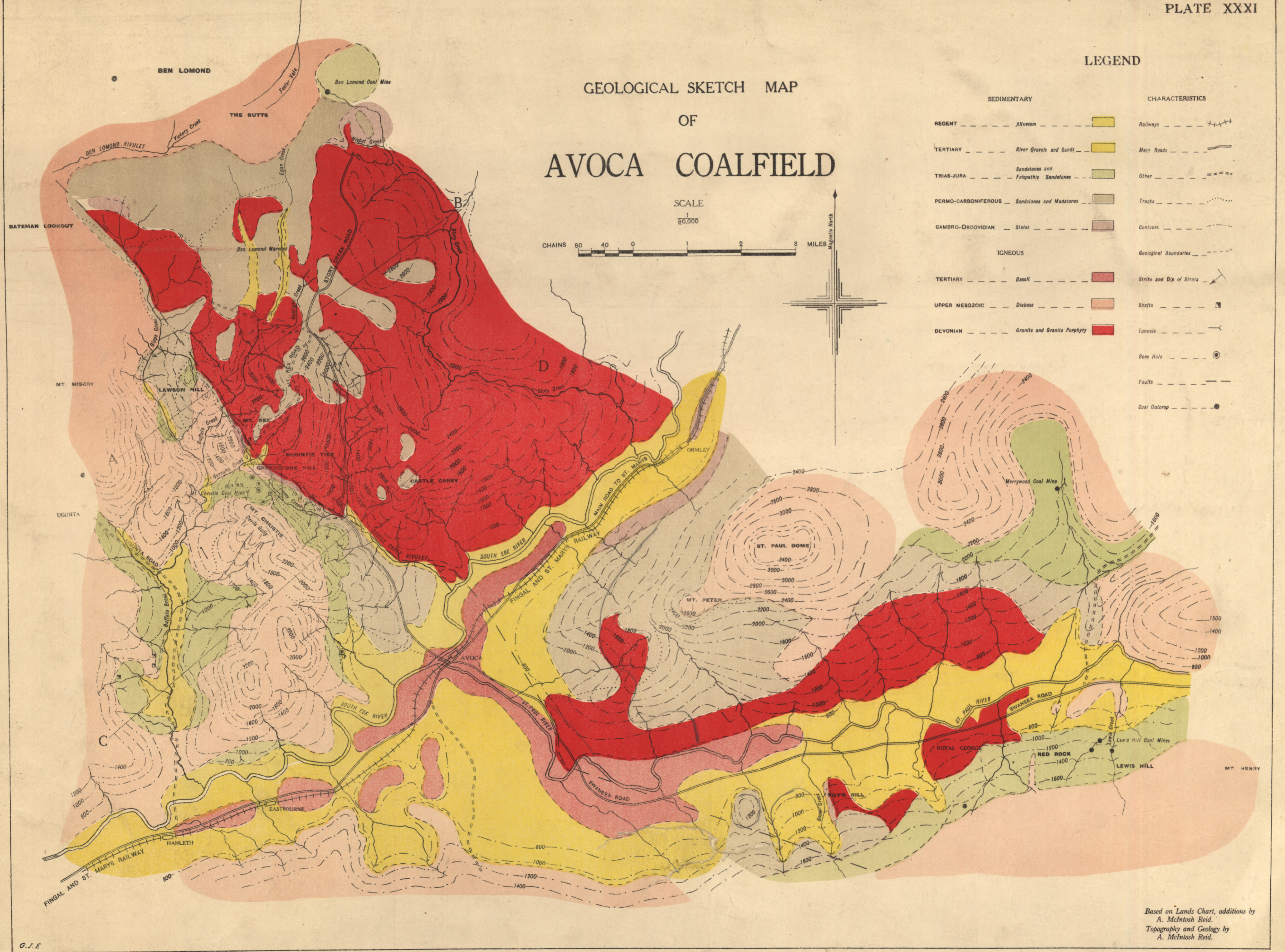
PLATE XXXI

GEOLOGICAL SKETCH MAP OF AVOCA COALFIELD



LEGEND

SEDIMENTARY		CHARACTERISTICS	
RECENT	Alluvium		Railways
TERTIARY	River Gravels and Sands		Main Roads
TRIAS-JURA	Sandstones and Foliated Sandstones		Other
PERMO-CARBONIFEROUS	Sandstones and Mudstones		Tracks
CAMBRO-ORDOVICIAN	Slates		Contours
IGNEOUS			
TERTIARY	Basalt		Strike and Dip of Strata
UPPER MESOZOIC	Diabase		Shafts
DEVONIAN	Granite and Granite Porphyry		Tunnels
			Bore Hole
			Faults
			Coal Outcrop



Based on Lands Chart, additions by
A. McIntosh Reid.
Topography and Geology by
A. McIntosh Reid.

Photo Engraved by John Vint Government Printer Hobart Tasmania.

G.F.E.
66Q/48