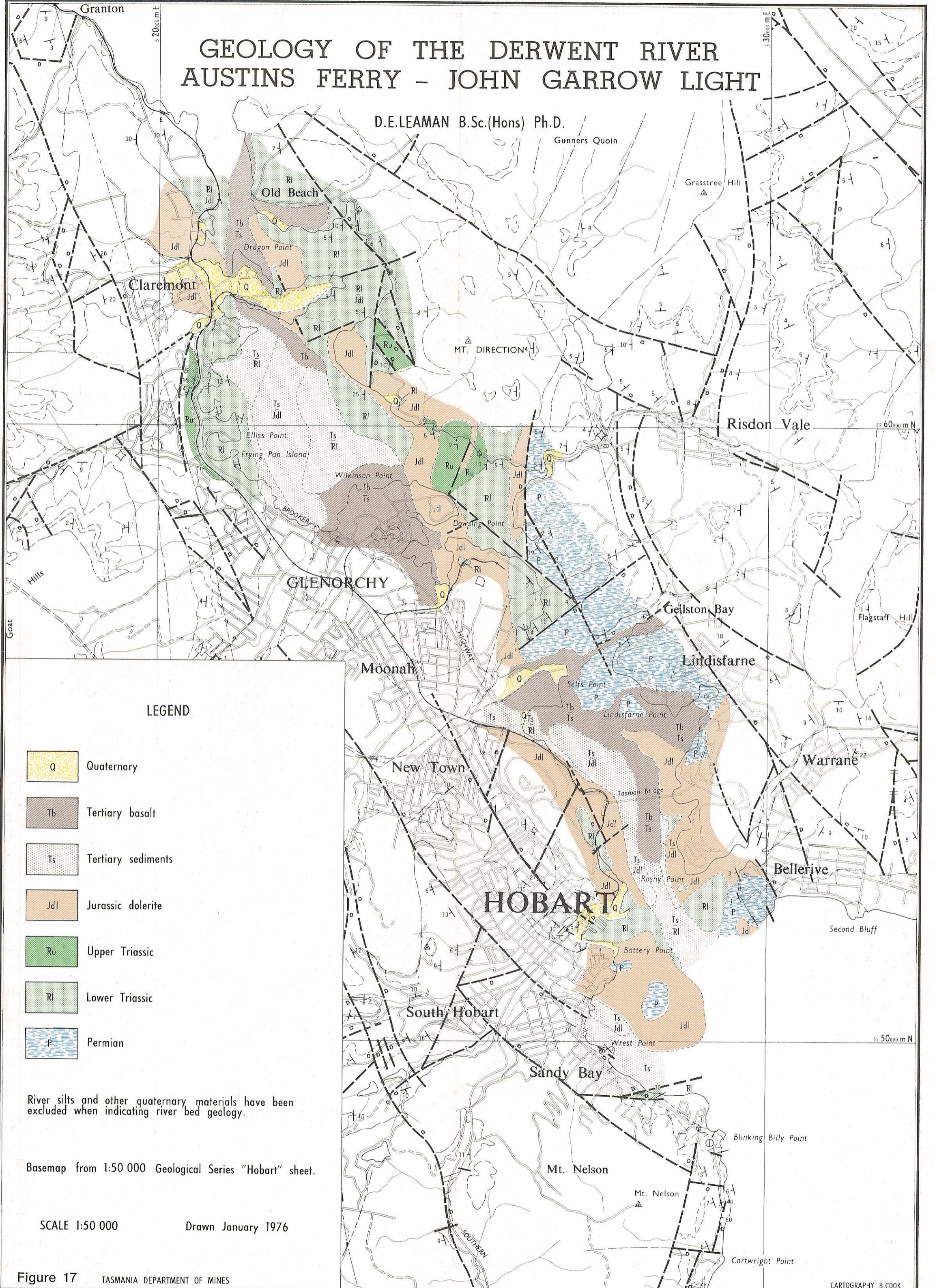


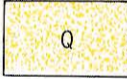
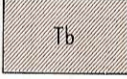
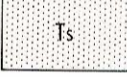

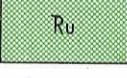


# GEOLOGY OF THE DERWENT RIVER AUSTINS FERRY - JOHN GARROW LIGHT

D.E. LEAMAN B.Sc.(Hons) Ph.D.

Gunners Quoin



## LEGEND

-  Q Quaternary
-  Tb Tertiary basalt
-  Ts Tertiary sediments
-  Jdl Jurassic dolerite
-  Ru Upper Triassic
-  Rl Lower Triassic
-  P Permian

River silts and other quaternary materials have been excluded when indicating river bed geology.

Basemap from 1:50 000 Geological Series "Hobart" sheet.

SCALE 1:50 000

Drawn January 1976

Figure 17 TASMANIA DEPARTMENT OF MINES

CARTOGRAPHY B. COOK

SILK SCREEN PRINT - LANDS DEPARTMENT

5 cm