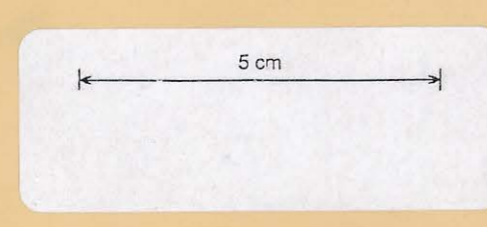
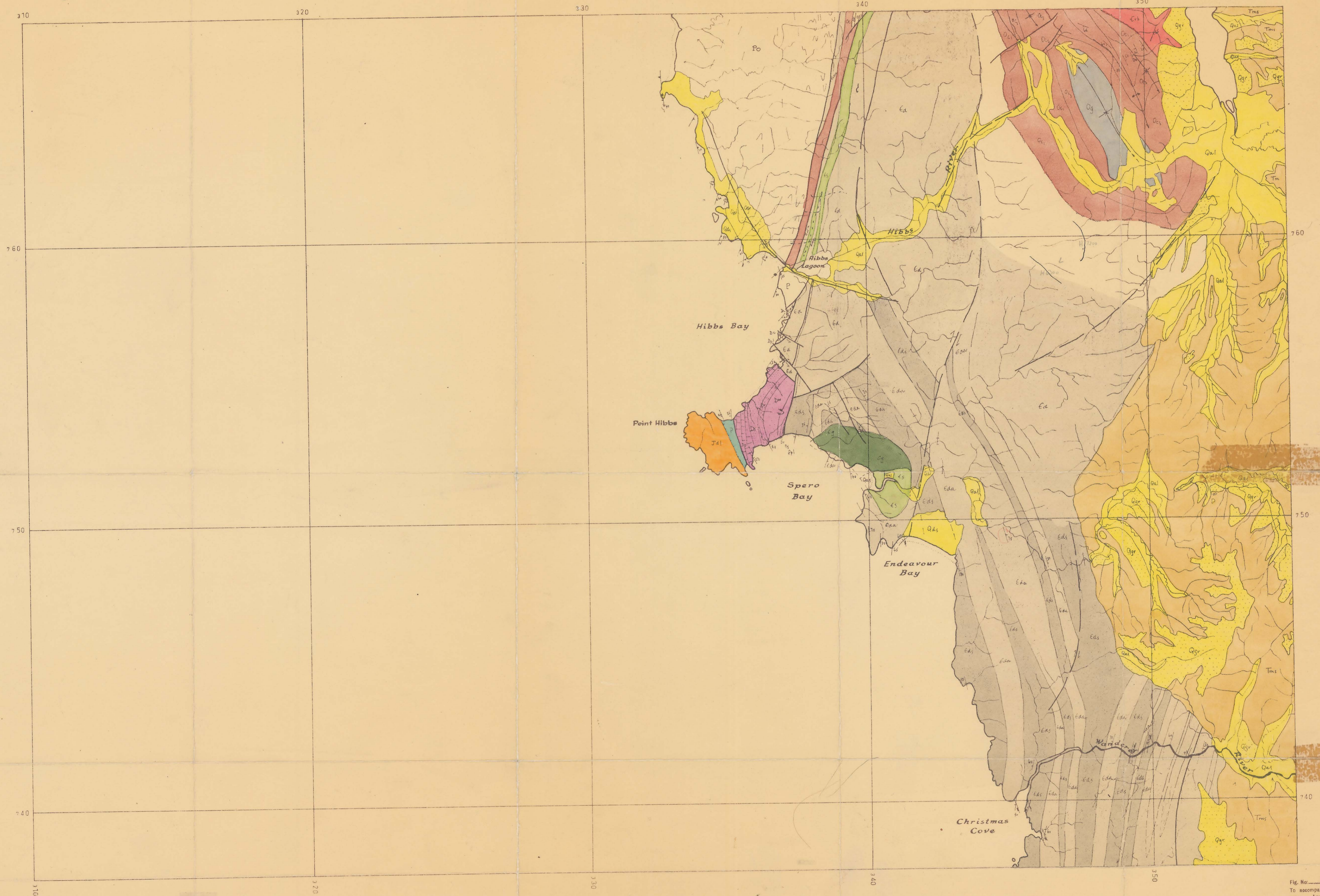


K. Corbett

POINT HIBBS



LEGEND
REFER TO MACQUARIE HARBOUR SHEET

PLAN NO. AI-1131

6752

Fig. No. 3b
To accompany B67-S Report No. 793
Dated: April 1968

THE BROKEN HILL PROPRIETARY CO. LTD EXPLORATION DEPARTMENT			
E.L. 13/65 SOUTH WEST TASMANIA 1 MILE GEOLOGICAL MAP-POINT HIBBS (DOUBLE COVE & HIBB BELTS)			
Drawn	M.H.	Date	1968
Traced	K.H.	Centre	Melbourne
Checked		Drawing No.	A1-1132
OIC		Project No.	TSW-48