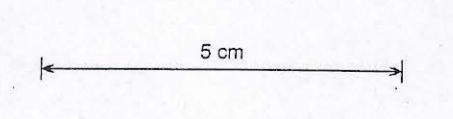
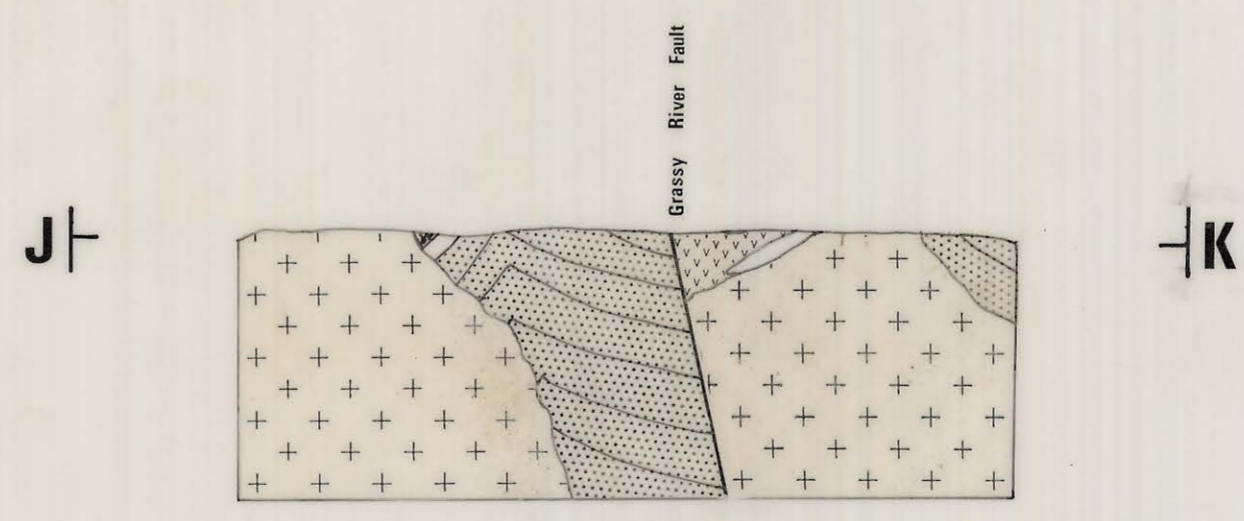
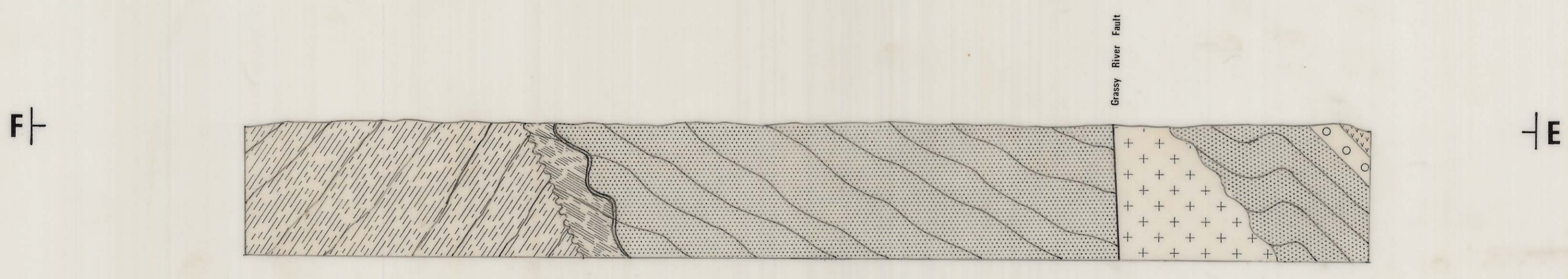
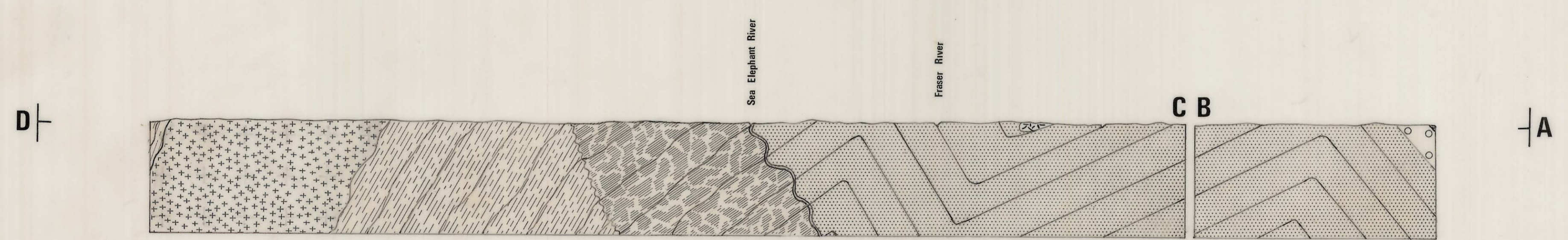
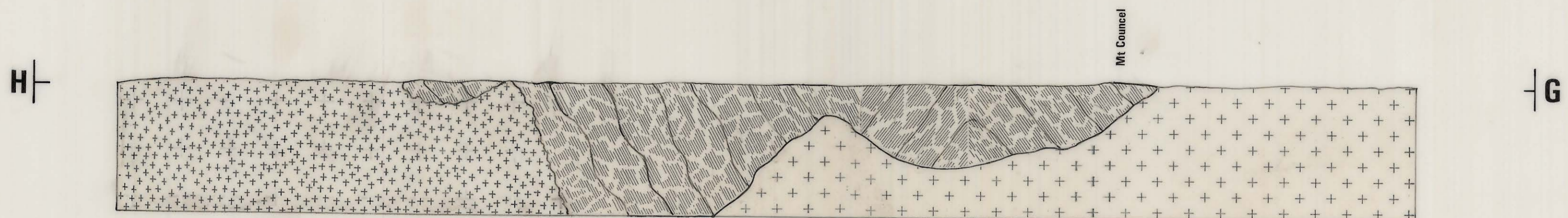


Sections
V:H = 1:1



	Pre-Cambrian Quartzites, Muscovite schists etc		Contact metamorphosed and metamorphosed sedimentary rocks Mica Series		Pre-Cambrian 'West Coast' Granites undifferentiated		Cambrian? Sgilitic, Basalt, Tuff, Agglomerates etc		Transitional Metamorphic Boundary
	Fine grained Muscovite - sericite schists				Devonian Granites				Unconformity
	Siltstone Shale with minor Sandstone				Basic Dykes undifferentiated				
	Shale, Slate, Tiltite, Dolomite, Gabbro etc				Tertiary Olivine Basalt				

DATE: FEB '72
GEOLOGIST: J.J.G.
DRAWN: P.M.F.G.
CHECKED:

GEOPEKO LIMITED
KING ISLAND GROUP
No. KGR 21
REGIONAL INTERPRETATION CROSS SECTIONS
KING ISLAND
6774

G-R-21