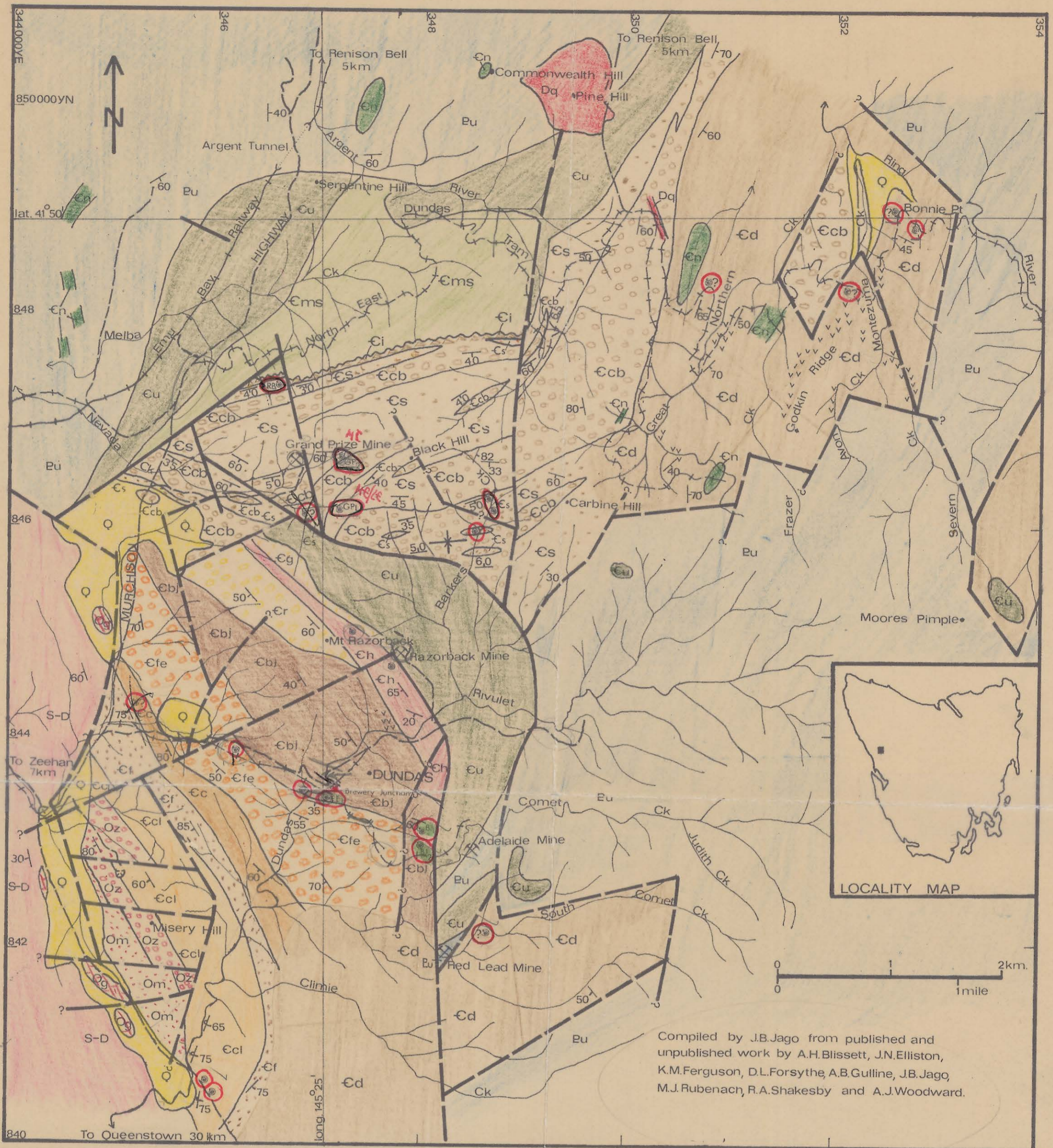


Fig.3 Geology of the Dundas district.



Compiled by J.B.Jago from published and unpublished work by A.H.Blissett, J.N.Elliston, K.M.Ferguson, D.L.Forsythe, A.B.Gulline, J.B.Jago, M.J.Rubenach, R.A.Shakesby and A.J.Woodward.

REFERENCE

- | | | |
|---|--|---|
| <p>QUATERNARY</p> <p>Q Alluvium</p> <p>SILURIAN-DEVONIAN</p> <p>S-D Eldon Group Undifferentiated</p> <p>ORDOVICIAN (June Group)</p> <p>Oz Gordon Limestone</p> <p>Om Moina Sandstone</p> <p>Oz Mt.Zeehan Conglomerate (=Misery Conglomerate)</p> <p>CAMBRIAN</p> <p>Ccl Climie Formation</p> <p>Cc Comet Formation</p> <p>Cfe Fernfields Formation</p> <p>Cb Brewery Junction Formation</p> <p>Cr Razorback Conglomerate</p> <p>Ch Hodge Slate</p> <p>Cg Greywacke conglomerate</p> <p>Ccb Chert-breccia and/or greywacke conglomerate</p> <p>Cs Siltstone, mudstone and slate with subordinate sandstone and greywacke</p> <p>Ci Spillite conglomerate</p> <p>Cd Cambrian Undifferentiated</p> <p>LOWER CAMBRIAN-PRECAMBRIAN</p> <p>Eu Crimson Creek Formation, Oonah Formation and Concert Schist, Undifferentiated</p> | <p>IGNEOUS ROCKS</p> <p>DEVONIAN</p> <p>Dq Quartz porphyry</p> <p>CAMBRIAN</p> <p>Cn Gabbro, norite and dolerite</p> <p>Cu Serpentinite and pyroxenite</p> | <p>— geological boundary</p> <p>~ unconformity</p> <p>70/ strike and dip of strata</p> <p>75 overturned strata</p> <p>⊕ syncline</p> <p>— established fault</p> <p>- - - fault, position approximate</p> <p>--- fault, inferred</p> <p>⊙ Cambrian fossil locality [discovered or relocated], with designation (if any) used in text</p> <p>⊙ Cambrian fossil locality, previously reported, not relocated</p> <p>⊙ mine or prospect</p> <p>⊙ quarry</p> <p>— roads</p> <p>+++ railway (in use)</p> <p>--- railway (abandoned)</p> <p>~ creeks</p> |
|---|--|---|

