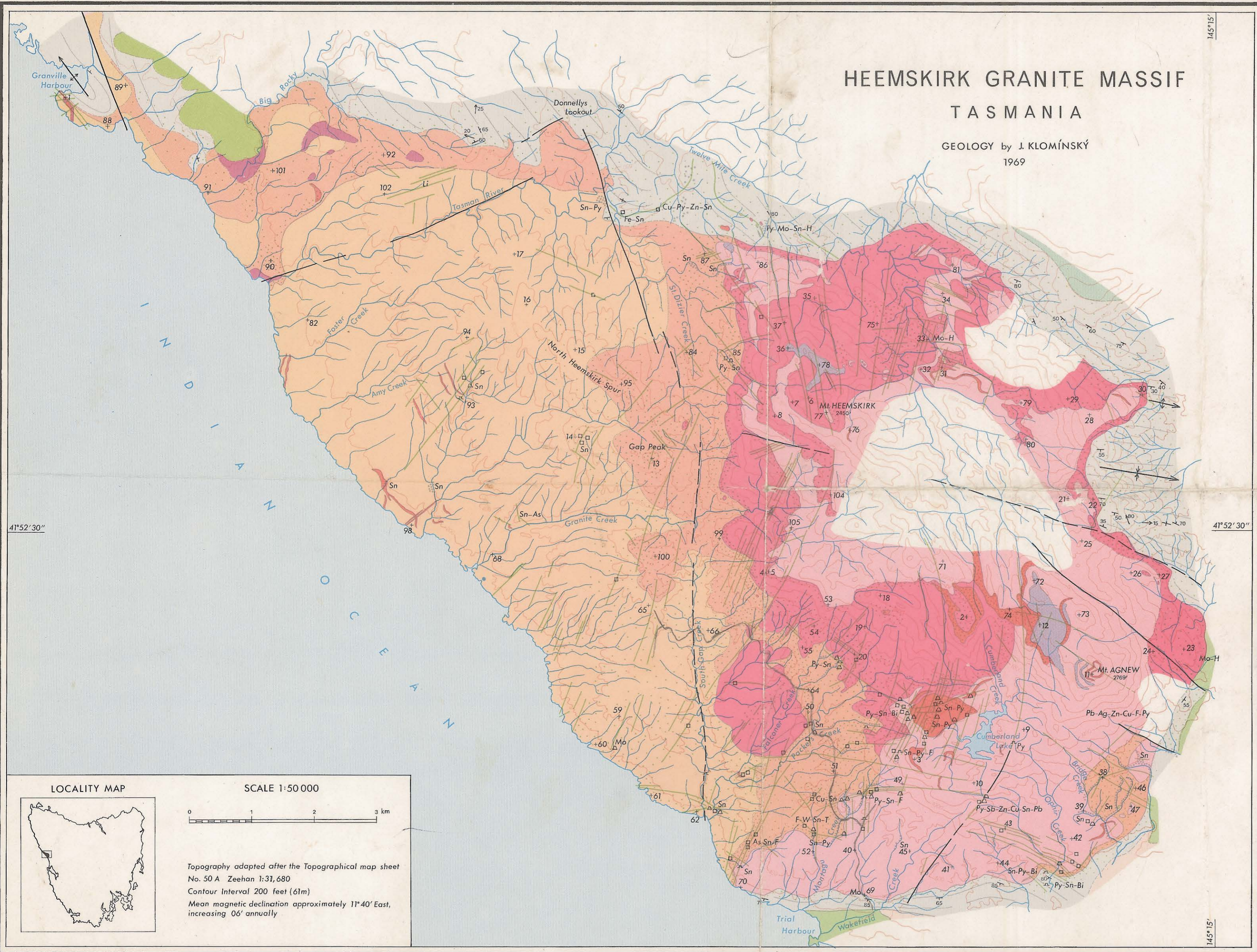


HEEMSKIRK GRANITE MASSIF TASMANIA

GEOLOGY by J. KLONINSKY
1969



REFERENCE (Superficial deposits omitted)

- TERTIARY**
- Basalt
- MESOZOIC**
- Jurassic
- Dolerite
- PALAEOZOIC**
- Devonian (?)
- Quartz-tourmaline veins
- Tourmalinisation of country rocks
- Tourmaline nodules
- "WHITE" GRANITE**
- Aplite granite
- Medium to fine grained granite
- Coarse grained granite
- Contaminated porphyritic granite
- "RED" GRANITE**
- Medium to fine grained granite
- Coarse grained granite
- Contaminated porphyritic granite
- Cambrian**
- Mafic and ultramafic intrusives
- Mudstones, greywackes
- UPPER PROTEROZOIC**
- Quartzite and slates
- Geological boundary— position accurate
position approximate
- Transitional boundary between granite types
- Trend of bedding
- Strike and dip of beds, vertical beds
- Anticline and syncline showing plunge
- Plunge of fold axes
- Fault— position approximate
- Adit and shaft, quarry or opencut
(Abandoned mines and prospects)
- Alluvial workings (tin)
- +13 Sample locality and number

LOCALITY MAP

SCALE 1:50 000

Topography adapted after the Topographical map sheet No. 50 A Zeehan 1:31,680
Contour Interval 200 feet (61m)
Mean magnetic declination approximately 11°40' East, increasing 06' annually

Py—Pyrite, F—Fluorite, W—Wolframite, Zn—Sphalerite, Pb—Galena, Mo—Molybdenite, Cu—Chalcopyrite, Sn—Cassiterite, T—Topaz, Bi—Bismuth (Bi-ores), Ag—Tetrahedrite, As—Arsenopyrite, Sb—Jamesonite, H—Hematite, Fe—Magnetite, Li—Lepidolite

5 cm