

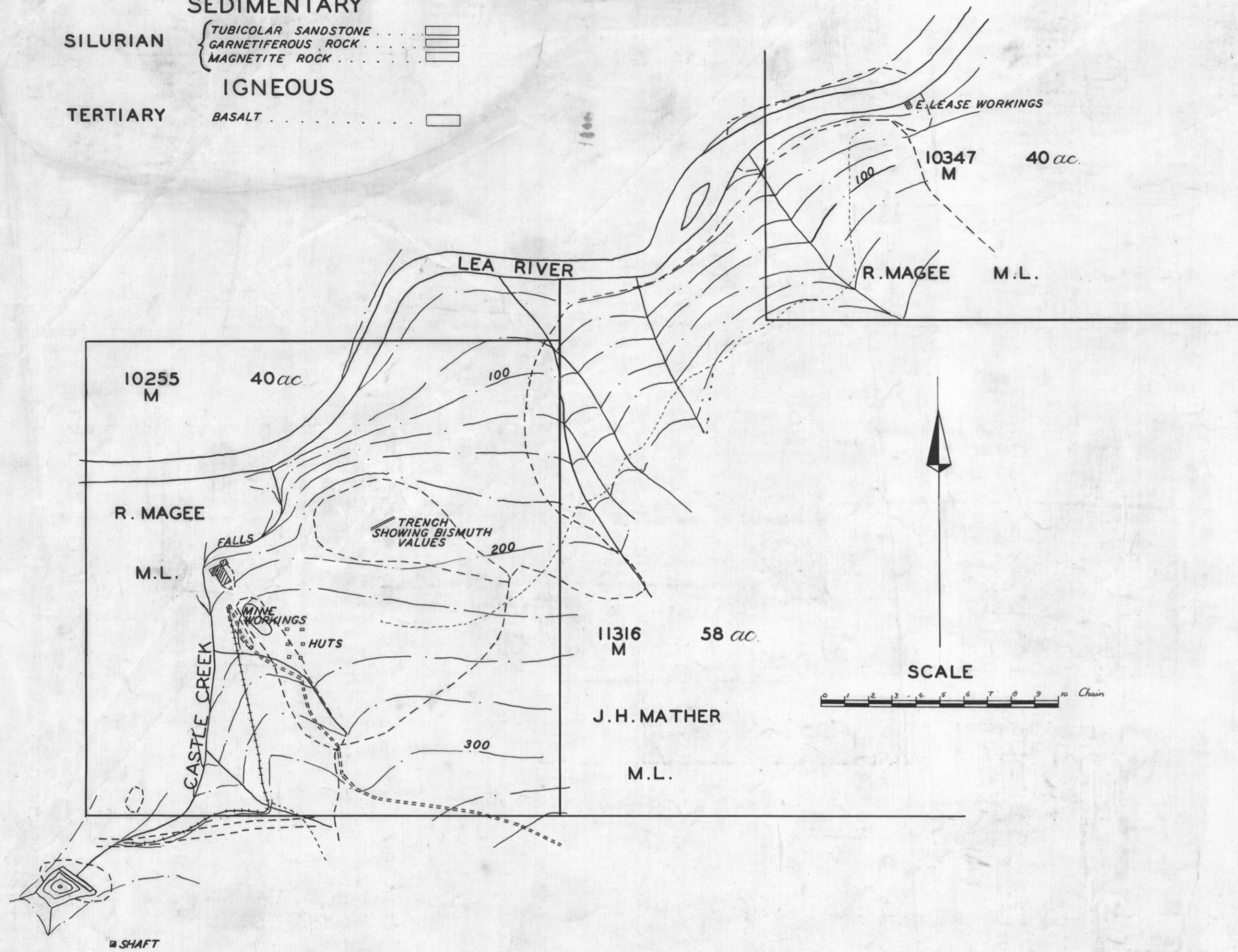
692/36

3m

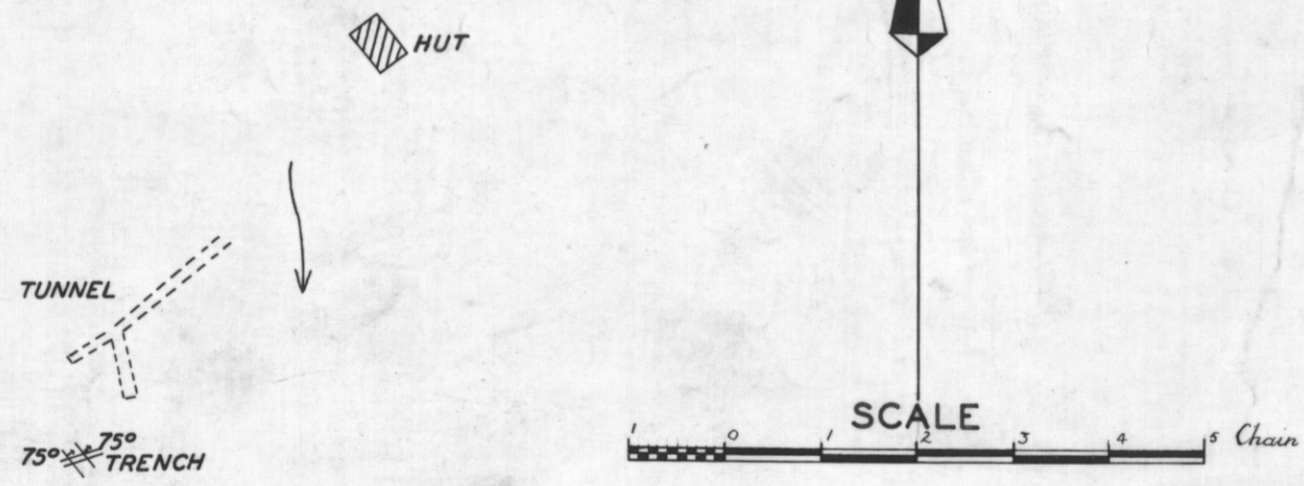
STORMONT BISMUTH MINE

LEGEND

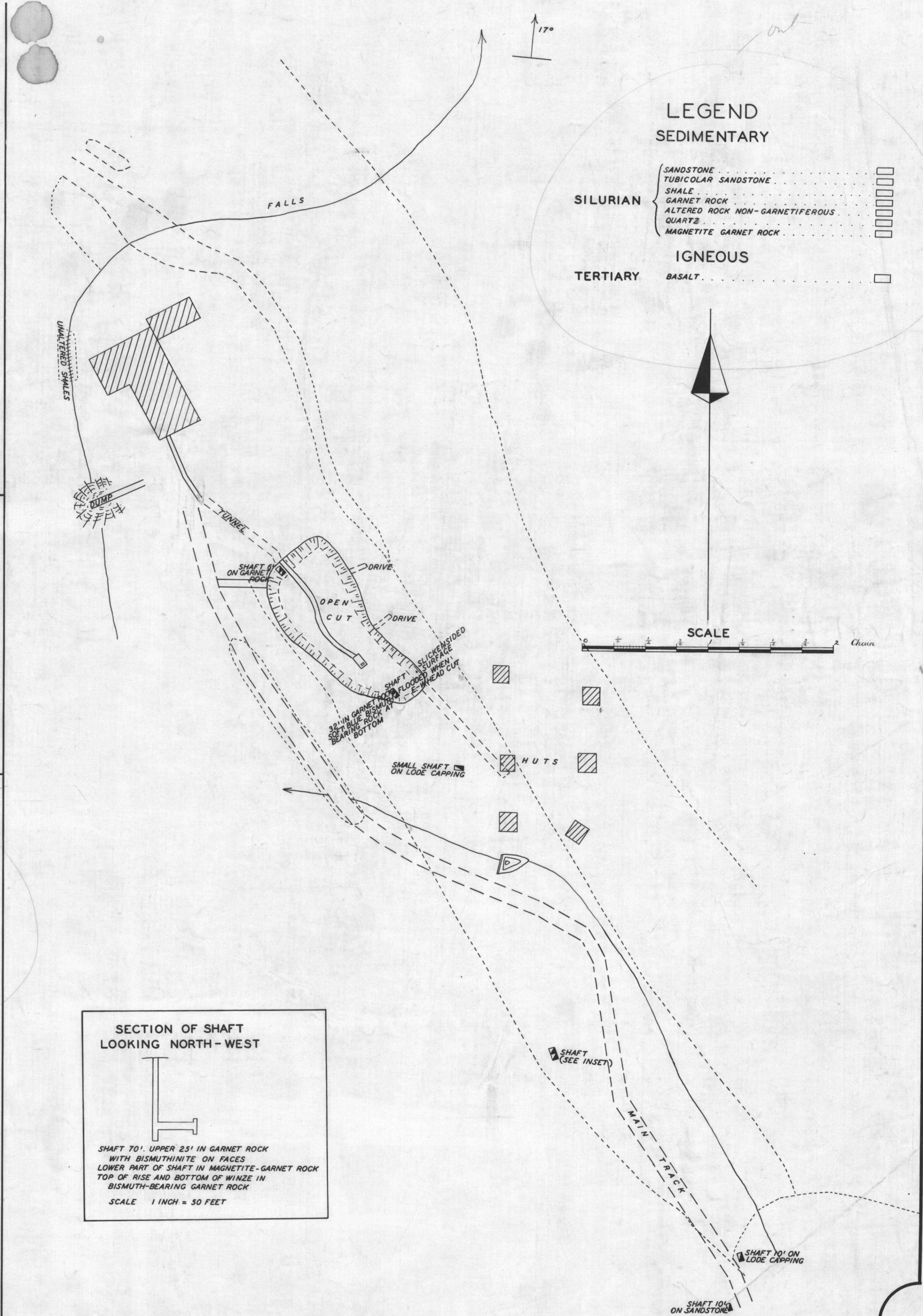
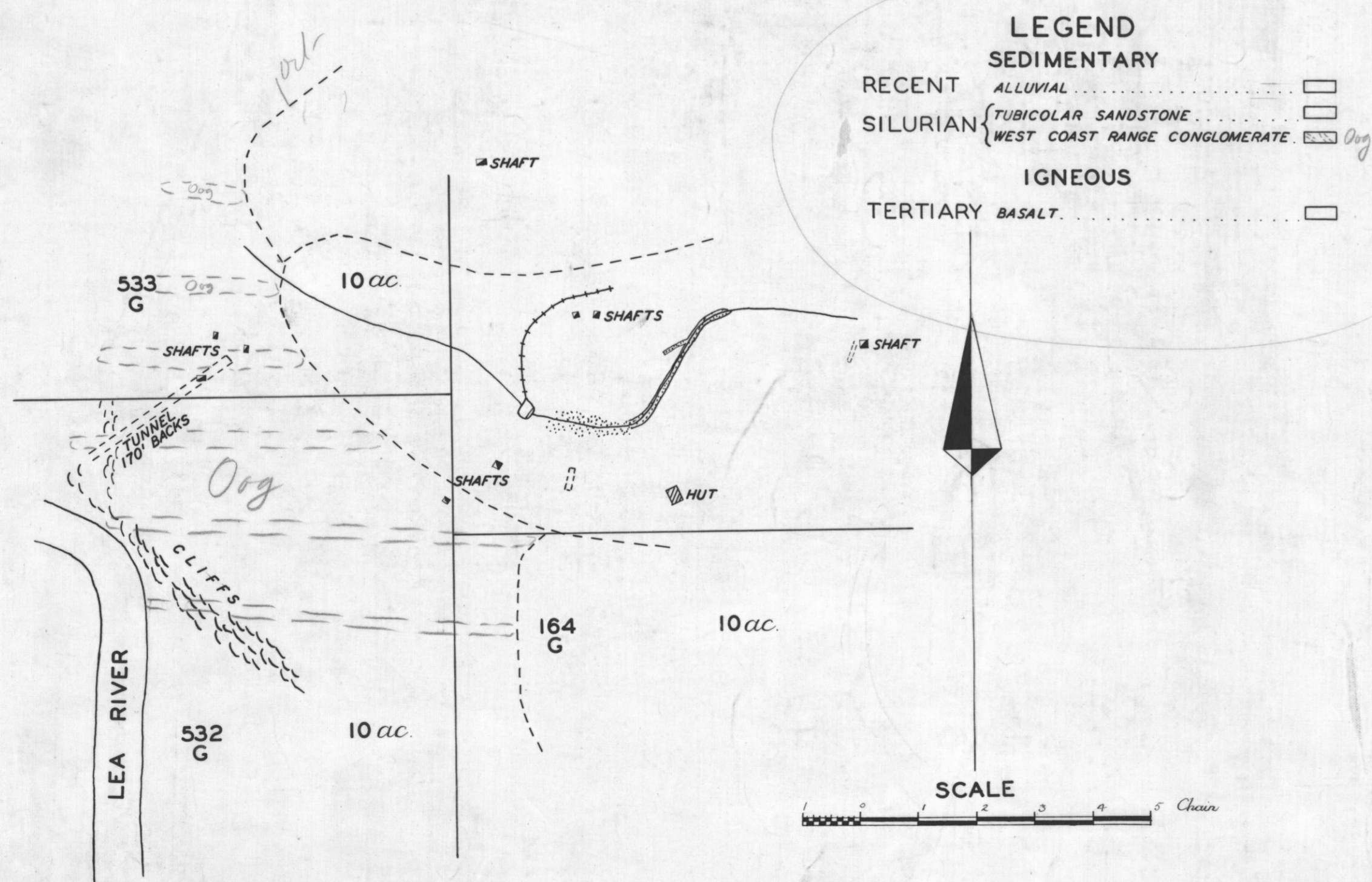
- SEDIMENTARY**
- SILURIAN
 - TUBICULAR SANDSTONE
 - GARNETIFEROUS ROCK
 - MAGNETITE ROCK
 - TERTIARY
 - BASALT
- IGNEOUS**



DEVONPORT MINE



BLACK'S MINE



LEGEND

- SEDIMENTARY**
- SANDSTONE
 - TUBICULAR SANDSTONE
 - SHALE
 - GARNET ROCK
 - ALTERED ROCK NON-GARNETIFEROUS
 - QUARTZ
 - MAGNETITE GARNET ROCK
- IGNEOUS**
- TERTIARY BASALT

SECTION OF SHAFT LOOKING NORTH-WEST

SHAFT 70'. UPPER 25' IN GARNET ROCK WITH BISMUTHINITE ON FACES. LOWER PART OF SHAFT IN MAGNETITE-GARNET ROCK. TOP OF RISE AND BOTTOM OF WINDZE IN BISMUTH-BEARING GARNET ROCK. SCALE 1 INCH = 50 FEET.