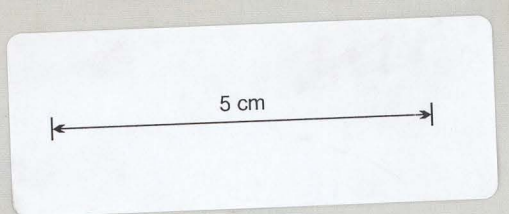


W. & A. BRISSELL CO.

PLAN OF
Survey of Water Rights Nos 265 364 474
33W 33W 36W
PARISH OF KAY
COUNTY OF DORSET
Scale 8 Chs. to an Inch.

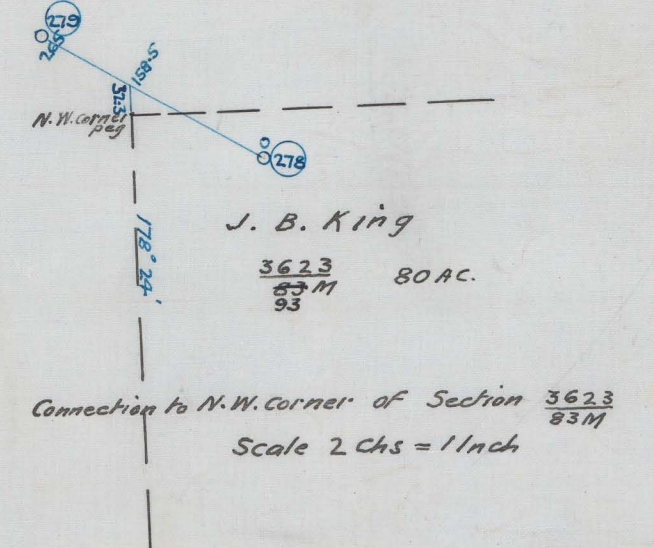
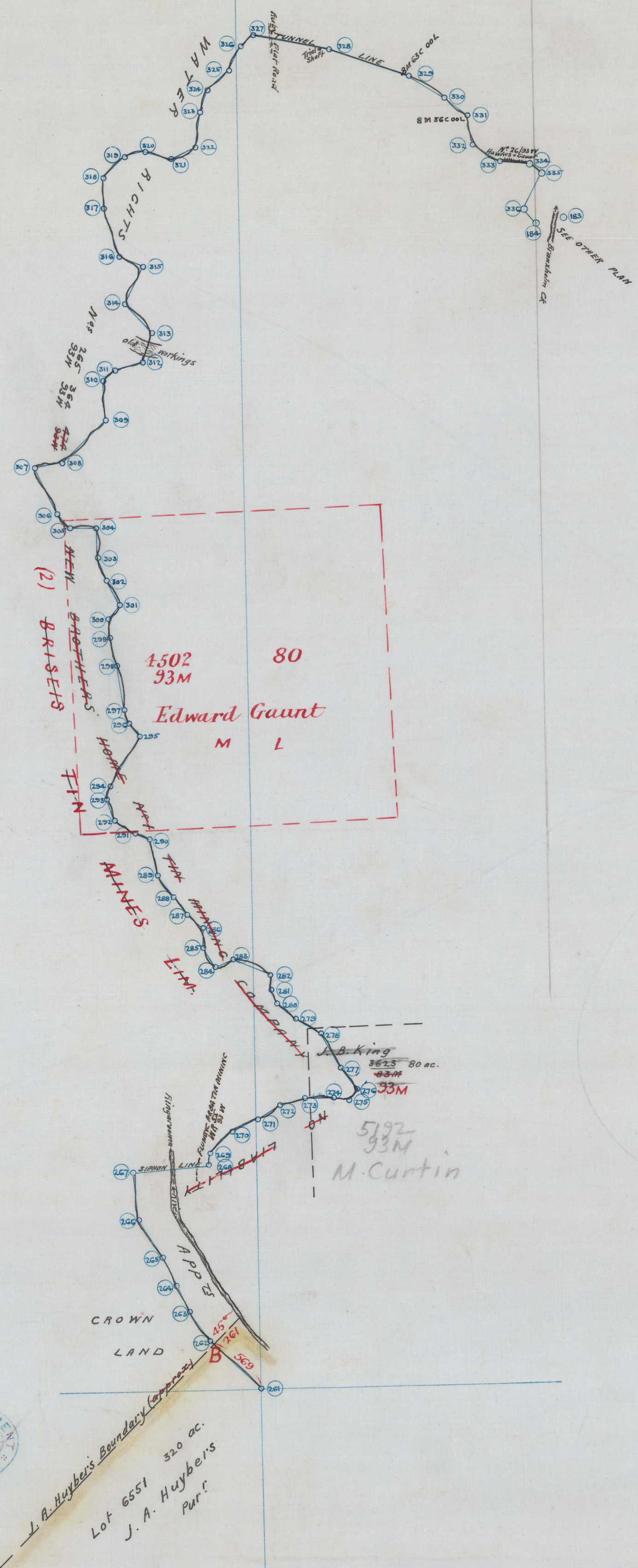
15 heads
10 heads
These Surrendered
21. 7. 04
Not Issued
Cancelled



Sheet No 2

DUPLICATE

No	BEARING	LENGTH
261		
262	314° 34'	637.0
263	327° 2'	319.1
264	334° 36'	261.7
265	335° 57'	285.8
266	328° 17'	394.7
267	352° 22'	432.8
268	86° 19'	697.0
269	10° 39'	113.6
270	43° 34'	274.3
271	66° 36'	252.9
272	59° 35'	243.6
273	74° 35'	234.2
274	90° 50'	263.9
275	103° 50'	140.9
276	33° 28'	131.3
277	324° 45'	249.0
278	332° 41'	360.0
279	299° 43'	265.0
280	306° 31'	223.3
281	340° 54'	139.5
282	0° 56'	136.7
283	293° 11'	363.3
284	243° 2'	175.3
285	329° 58'	220.7
286	0° 41'	172.5
287	308° 13'	181.0
288	323° 34'	208.0
289	325° 39'	242.2
290	348° 57'	351.7
291	294° 52'	137.8
292	303° 00'	222.3
293	340° 48'	204.3
294	15° 40'	110.5
295	31° 9'	531.8
296	322° 0'	147.0
297	342° 23'	136.8
298	352° 17'	396.0
299	347° 4'	265.8
300	355° 35'	173.2
301	38° 40'	158.7
302	332° 21'	248.2
303	337° 30'	208.4
304	359° 4'	273.0
305	271° 29'	243.4
306	319° 16'	173.4
307	335° 10'	462.2
308	80° 17'	254.2
309	46° 16'	553.3
310	358° 43'	352.3
311	46° 54'	137.7
312	75° 16'	257.6
313	17° 33'	274.0
314	320° 1'	362.5
315	26° 50'	369.0
316	296° 16'	231.2
317	343° 14'	456.0
318	0° 42'	288.3
319	46° 19'	266.5
320	77° 8'	194.2
321	109° 8'	246.5
322	63° 52'	242.3
323	7° 51'	316.6
324	20° 23'	212.6
325	48° 53'	255.0
326	24° 47'	239.0
327	48° 25'	167.6
328	102° 6'	700.5
329	110° 50'	762.2
330	120° 24'	366.3
331	129° 19'	260.3
332	170° 58'	265.7
333	121° 25'	291.8
334	97° 9'	270.4
335	130° 36'	133.8
336	207° 38'	360.0
184	138° 41'	176.2



Donald Fraser
Cattle & Surveyor
Survey commenced 1-5-00
Survey finished 12-6-00

May be acted upon 17. 8. 1900

Tracing to 2/10
23-6-1900

Charles A.K.O.
25. 6. 1900

10/10/00
For 14 yrs
W.H.W.
4-10-00

SP
76/02

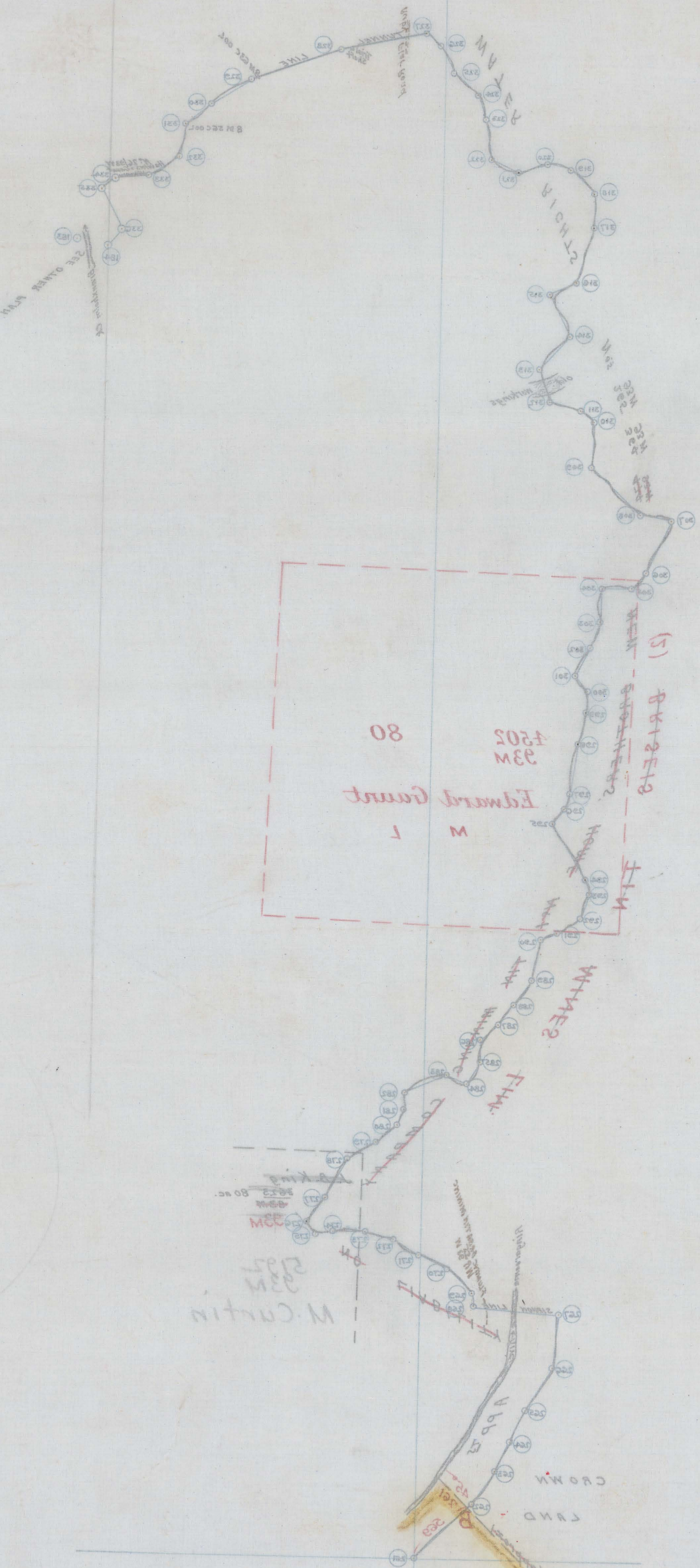


76. 265. & 364. BRISEIS CO.
93.W. 93.W.

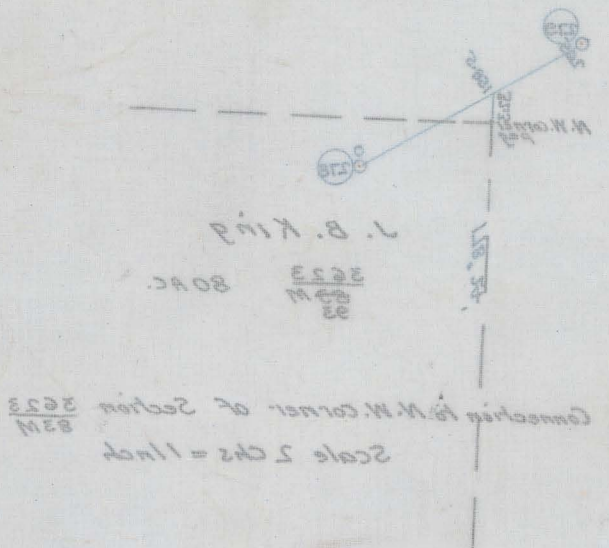
PLAN OF
Survey of Water Rights
PARISH of KAY
COUNTY of DORSET
Scale 800 to an Inch.

Sheet No 2

DUPLICATE



No	Bearing	Length
184	198° 41'	176.2
185	207° 28'	360.0
186	130° 36'	133.8
187	97° 9'	270.4
188	127° 22'	231.8
189	170° 28'	262.7
190	120° 19'	260.3
191	120° 19'	260.3
192	120° 19'	260.3
193	120° 19'	260.3
194	120° 19'	260.3
195	120° 19'	260.3
196	120° 19'	260.3
197	120° 19'	260.3
198	120° 19'	260.3
199	120° 19'	260.3
200	120° 19'	260.3
201	120° 19'	260.3
202	120° 19'	260.3
203	120° 19'	260.3
204	120° 19'	260.3
205	120° 19'	260.3
206	120° 19'	260.3
207	120° 19'	260.3
208	120° 19'	260.3
209	120° 19'	260.3
210	120° 19'	260.3
211	120° 19'	260.3
212	120° 19'	260.3
213	120° 19'	260.3
214	120° 19'	260.3
215	120° 19'	260.3
216	120° 19'	260.3
217	120° 19'	260.3
218	120° 19'	260.3
219	120° 19'	260.3
220	120° 19'	260.3
221	120° 19'	260.3
222	120° 19'	260.3
223	120° 19'	260.3
224	120° 19'	260.3
225	120° 19'	260.3
226	120° 19'	260.3
227	120° 19'	260.3
228	120° 19'	260.3
229	120° 19'	260.3
230	120° 19'	260.3
231	120° 19'	260.3
232	120° 19'	260.3
233	120° 19'	260.3
234	120° 19'	260.3
235	120° 19'	260.3
236	120° 19'	260.3
237	120° 19'	260.3
238	120° 19'	260.3
239	120° 19'	260.3
240	120° 19'	260.3
241	120° 19'	260.3
242	120° 19'	260.3
243	120° 19'	260.3
244	120° 19'	260.3
245	120° 19'	260.3
246	120° 19'	260.3
247	120° 19'	260.3
248	120° 19'	260.3
249	120° 19'	260.3
250	120° 19'	260.3
251	120° 19'	260.3
252	120° 19'	260.3
253	120° 19'	260.3
254	120° 19'	260.3
255	120° 19'	260.3
256	120° 19'	260.3
257	120° 19'	260.3
258	120° 19'	260.3
259	120° 19'	260.3
260	120° 19'	260.3
261	120° 19'	260.3
262	120° 19'	260.3
263	120° 19'	260.3
264	120° 19'	260.3
265	120° 19'	260.3
266	120° 19'	260.3
267	120° 19'	260.3
268	120° 19'	260.3
269	120° 19'	260.3
270	120° 19'	260.3
271	120° 19'	260.3
272	120° 19'	260.3
273	120° 19'	260.3
274	120° 19'	260.3
275	120° 19'	260.3
276	120° 19'	260.3
277	120° 19'	260.3
278	120° 19'	260.3
279	120° 19'	260.3
280	120° 19'	260.3
281	120° 19'	260.3
282	120° 19'	260.3
283	120° 19'	260.3
284	120° 19'	260.3
285	120° 19'	260.3
286	120° 19'	260.3
287	120° 19'	260.3
288	120° 19'	260.3
289	120° 19'	260.3
290	120° 19'	260.3
291	120° 19'	260.3
292	120° 19'	260.3
293	120° 19'	260.3
294	120° 19'	260.3
295	120° 19'	260.3
296	120° 19'	260.3
297	120° 19'	260.3
298	120° 19'	260.3
299	120° 19'	260.3
300	120° 19'	260.3
301	120° 19'	260.3
302	120° 19'	260.3
303	120° 19'	260.3
304	120° 19'	260.3
305	120° 19'	260.3
306	120° 19'	260.3
307	120° 19'	260.3
308	120° 19'	260.3
309	120° 19'	260.3
310	120° 19'	260.3
311	120° 19'	260.3
312	120° 19'	260.3
313	120° 19'	260.3
314	120° 19'	260.3
315	120° 19'	260.3
316	120° 19'	260.3
317	120° 19'	260.3
318	120° 19'	260.3
319	120° 19'	260.3
320	120° 19'	260.3
321	120° 19'	260.3
322	120° 19'	260.3
323	120° 19'	260.3
324	120° 19'	260.3
325	120° 19'	260.3
326	120° 19'	260.3
327	120° 19'	260.3
328	120° 19'	260.3
329	120° 19'	260.3
330	120° 19'	260.3
331	120° 19'	260.3
332	120° 19'	260.3
333	120° 19'	260.3
334	120° 19'	260.3
335	120° 19'	260.3
336	120° 19'	260.3
337	120° 19'	260.3
338	120° 19'	260.3
339	120° 19'	260.3
340	120° 19'	260.3
341	120° 19'	260.3
342	120° 19'	260.3
343	120° 19'	260.3
344	120° 19'	260.3
345	120° 19'	260.3
346	120° 19'	260.3
347	120° 19'	260.3
348	120° 19'	260.3
349	120° 19'	260.3
350	120° 19'	260.3
351	120° 19'	260.3
352	120° 19'	260.3
353	120° 19'	260.3
354	120° 19'	260.3
355	120° 19'	260.3
356	120° 19'	260.3
357	120° 19'	260.3
358	120° 19'	260.3
359	120° 19'	260.3
360	120° 19'	260.3
361	120° 19'	260.3
362	120° 19'	260.3
363	120° 19'	260.3
364	120° 19'	260.3
365	120° 19'	260.3
366	120° 19'	260.3
367	120° 19'	260.3
368	120° 19'	260.3
369	120° 19'	260.3
370	120° 19'	260.3
371	120° 19'	260.3
372	120° 19'	260.3
373	120° 19'	260.3
374	120° 19'	260.3
375	120° 19'	260.3
376	120° 19'	260.3
377	120° 19'	260.3
378	120° 19'	260.3
379	120° 19'	260.3
380	120° 19'	260.3
381	120° 19'	260.3
382	120° 19'	260.3
383	120° 19'	260.3
384	120° 19'	260.3
385	120° 19'	260.3
386	120° 19'	260.3
387	120° 19'	260.3
388	120° 19'	260.3
389	120° 19'	260.3
390	120° 19'	260.3
391	120° 19'	260.3
392	120° 19'	260.3
393	120° 19'	260.3
394	120° 19'	260.3
395	120° 19'	260.3
396	120° 19'	260.3
397	120° 19'	260.3
398	120° 19'	260.3
399	120° 19'	260.3
400	120° 19'	260.3



Survey finished 12-6-00
Survey commenced 1-2-00
Charles W. Hubert
22-6-1900

May be acted upon 17. 8. 1900

800 1/2
10 1/2
10-00

