

# PLAN

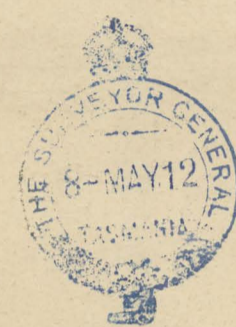
OF  
EVERAL WATER RIGHTS

COUNTY OF DORSET

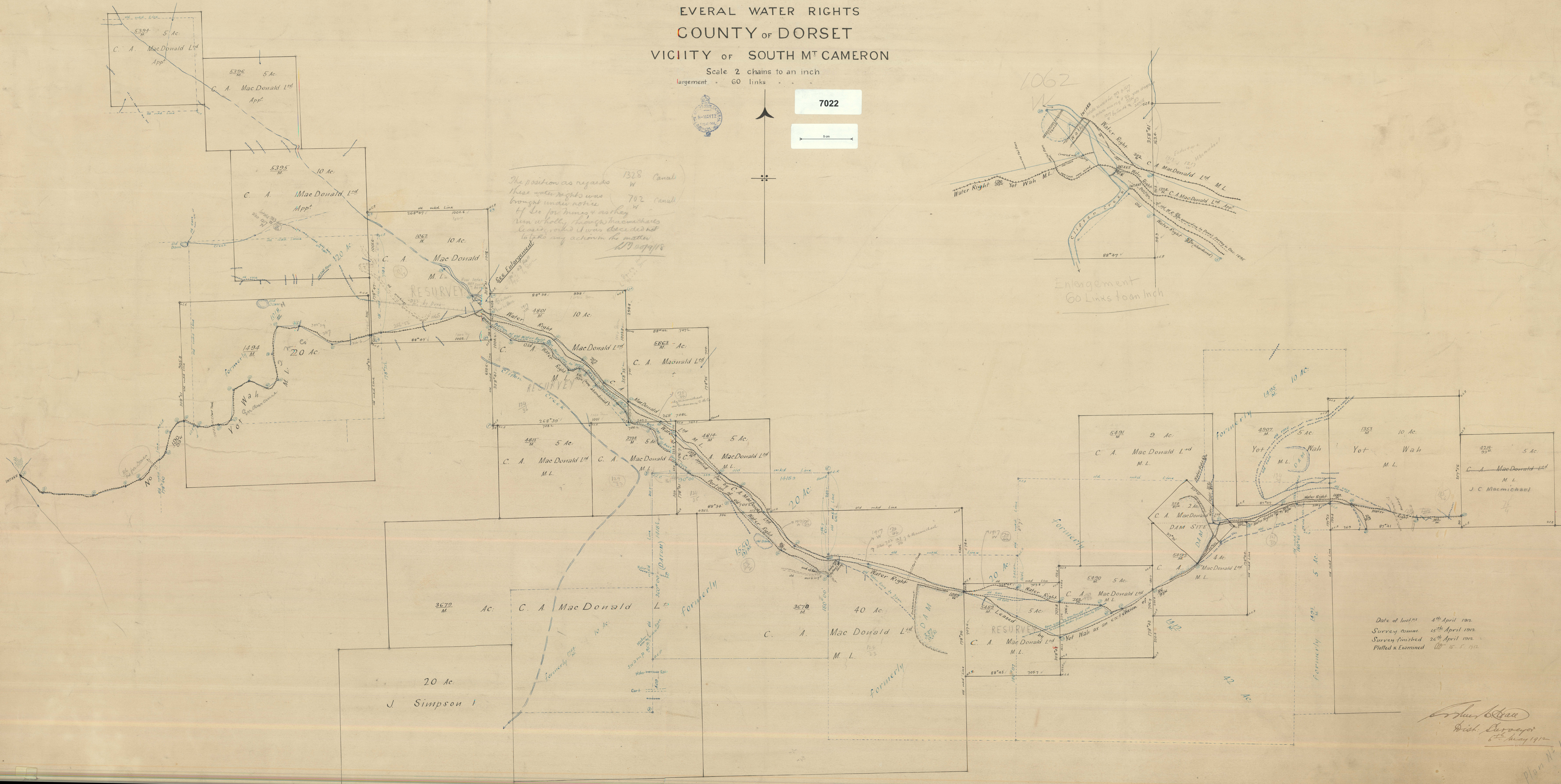
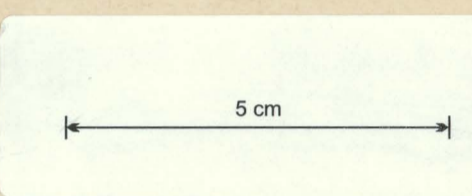
VICINITY OF SOUTH MT CAMERON

Scale 2 chains to an inch

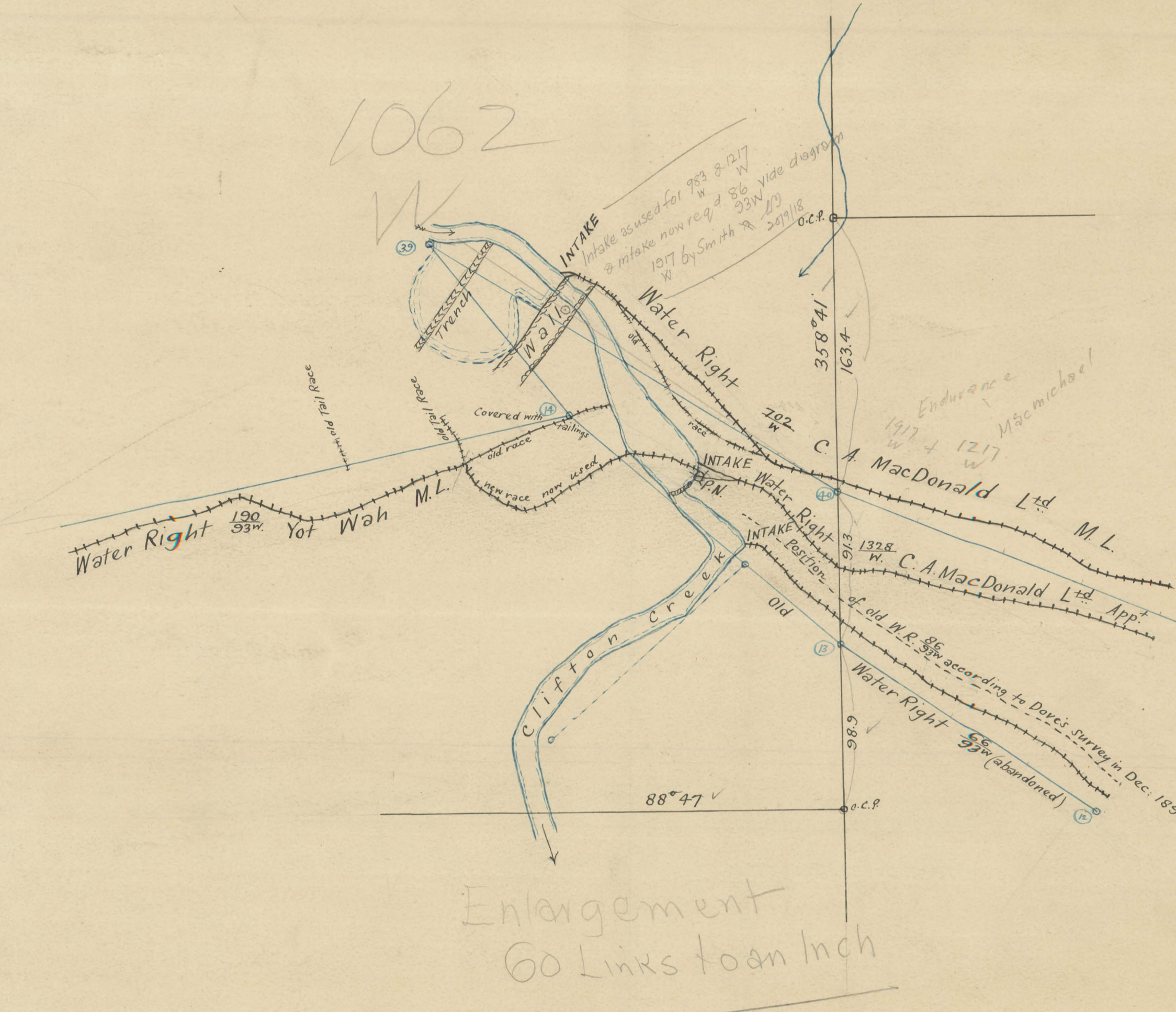
largement 60 links



7022



The position as regards these water rights was brought under notice of the Commission as they run wholly through Macdonald's land, and it was decided not to take any account of the matter.  
1328 Canal  
702 Canal  
1872/18



Date of Inset 4<sup>th</sup> April 1912  
Survey comm. 15<sup>th</sup> April 1912  
Survey finished 26<sup>th</sup> April 1912  
Plotted & Examined 15.5.1912

*John Brown*  
Dist. Surveyor  
6<sup>th</sup> May 1912  
Plan No. 103