

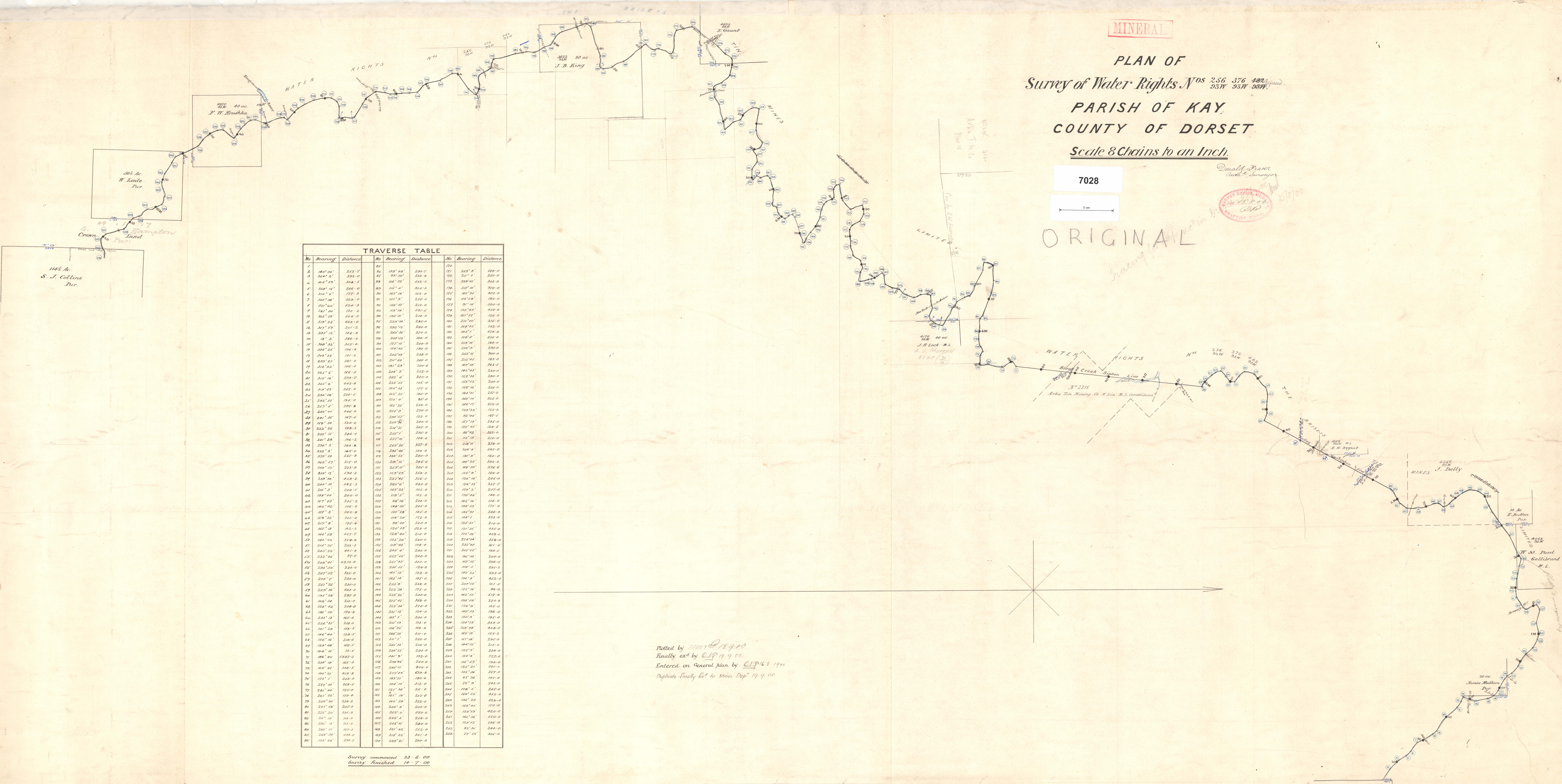
MINERAL

PLAN OF
 Survey of Water Rights Nos 256 376 482
 93W 93W 98W
 PARISH OF KAY
 COUNTY OF DORSET
 Scale 8 Chains to an Inch

7028
 5m

Donald Fraser
 Civil Engineer
 1875
 1876

ORIGINAL



TRAVERSE TABLE					
No	Bearing	Distance	No	Bearing	Distance
1	180° 00'	253.7	86	199° 08'	224.7
2	340° 2'	182.0	87	19° 00'	212.2
3	146° 25'	362.5	88	106° 16'	222.0
4	338° 04'	208.4	89	101° 41'	212.0
5	316° 4'	177.5	90	107° 08'	183.0
6	340° 38'	122.0	91	107° 0'	210.0
7	321° 26'	324.3	92	104° 10'	212.0
8	347° 00'	121.2	93	103° 16'	210.0
9	341° 08'	410.0	94	103° 11'	210.0
10	318° 23'	422.0	95	232° 18'	240.0
11	347° 29'	201.2	96	202° 12'	240.0
12	204° 15'	146.0	97	200° 06'	322.0
13	18° 2'	1360.3	98	203° 03'	100.0
14	340° 32'	145.9	99	177° 46'	200.0
15	342° 32'	104.8	100	102° 16'	150.0
16	146° 41'	171.3	101	202° 04'	238.0
17	243° 27'	381.0	102	217° 40'	240.0
18	312° 22'	102.0	103	197° 23'	200.0
19	142° 4'	405.0	104	204° 2'	212.0
20	347° 01'	220.7	105	242° 0'	210.0
21	341° 2'	443.8	106	225° 42'	165.0
22	314° 27'	249.0	107	146° 23'	125.0
23	240° 28'	220.2	108	102° 27'	100.0
24	222° 21'	120.0	109	174° 4'	85.0
25	227° 4'	207.8	110	162° 26'	218.0
26	241° 00'	440.0	111	229° 9'	220.0
27	247° 07'	193.0	112	204° 07'	122.0
28	108° 21'	120.2	113	200° 36'	240.0
29	222° 26'	108.3	114	216° 12'	240.0
30	235° 07'	246.0	115	216° 1'	240.0
31	240° 28'	104.2	116	227° 01'	194.0
32	226° 2'	164.8	117	203° 26'	337.0
33	242° 8'	145.0	118	204° 46'	130.0
34	239° 28'	122.8	119	199° 01'	160.0
35	146° 27'	212.0	120	220° 16'	242.0
36	343° 40'	243.0	121	252° 11'	260.0
37	244° 12'	170.3	122	103° 23'	324.0
38	242° 58'	408.2	123	222° 49'	224.0
39	246° 3'	142.3	124	206° 1'	440.0
40	240° 3'	209.5	125	163° 28'	102.0
41	198° 26'	240.0	126	109° 57'	152.0
42	107° 21'	193.0	127	148° 26'	218.0
43	146° 46'	148.0	128	144° 00'	245.0
44	107° 2'	360.0	129	135° 28'	105.0
45	109° 52'	302.0	130	146° 20'	172.0
46	247° 8'	145.0	131	146° 00'	210.0
47	142° 0'	142.3	132	120° 12'	324.0
48	140° 42'	452.7	133	128° 40'	210.0
49	140° 40'	149.8	134	123° 26'	240.0
50	240° 22'	221.3	135	109° 46'	148.0
51	240° 22'	441.0	136	240° 4'	240.0
52	232° 40'	77.0	137	237° 35'	240.0
53	246° 07'	422.0	138	222° 16'	240.0
54	243° 26'	224.0	139	234° 05'	120.0
55	247° 25'	321.0	140	140° 12'	122.0
56	246° 27'	224.0	141	142° 18'	147.0
57	247° 26'	220.0	142	223° 14'	210.0
58	239° 41'	483.0	143	212° 24'	125.0
59	104° 34'	289.0	144	222° 26'	300.0
60	146° 36'	200.0	145	227° 12'	440.0
61	128° 22'	200.0	146	212° 24'	125.0
62	140° 40'	170.8	147	217° 12'	124.0
63	243° 13'	145.0	148	140° 1'	200.0
64	232° 30'	208.0	149	201° 19'	210.0
65	140° 28'	200.0	150	126° 12'	148.0
66	144° 44'	228.5	151	206° 10'	311.0
67	136° 46'	210.0	152	116° 7'	200.0
68	120° 07'	140.0	153	210° 12'	200.0
69	140° 40'	121.5	154	204° 05'	200.0
70	140° 40'	5497.2	155	140° 0'	192.0
71	240° 0'	145.0	156	209° 06'	200.0
72	140° 40'	240.0	157	204° 05'	420.0
73	140° 21'	410.8	158	227° 46'	610.8
74	173° 4'	268.0	159	143° 21'	180.0
75	229° 00'	248.0	160	240° 10'	240.0
76	240° 21'	145.0	161	217° 16'	340.0
77	241° 21'	140.0	162	207° 16'	247.0
78	240° 00'	218.3	163	140° 24'	322.0
79	241° 28'	200.0	164	240° 0'	200.0
80	227° 21'	140.0	165	203° 0'	420.0
81	34° 10'	140.0	166	240° 4'	240.0
82	240° 10'	103.4	167	243° 40'	240.0
83	240° 07'	109.0	168	237° 43'	240.0
84	240° 16'	140.0	169	216° 22'	440.0
85	151° 48'	201.7	170	243° 21'	240.0

Plotted by *W.D. 1890*
 Finally ex'd by *W.D. 1900*
 Entered on General Plan by *W.D. 1900*
 Duplicate finally set to Mines Dept 1900

Survey commenced 23.6.00
 Survey finished 18.7.00

554 80 AC
 NEW BROTHERS HOME
 N° 1 TIN M CO NO LIA
 PART OF N° 2214