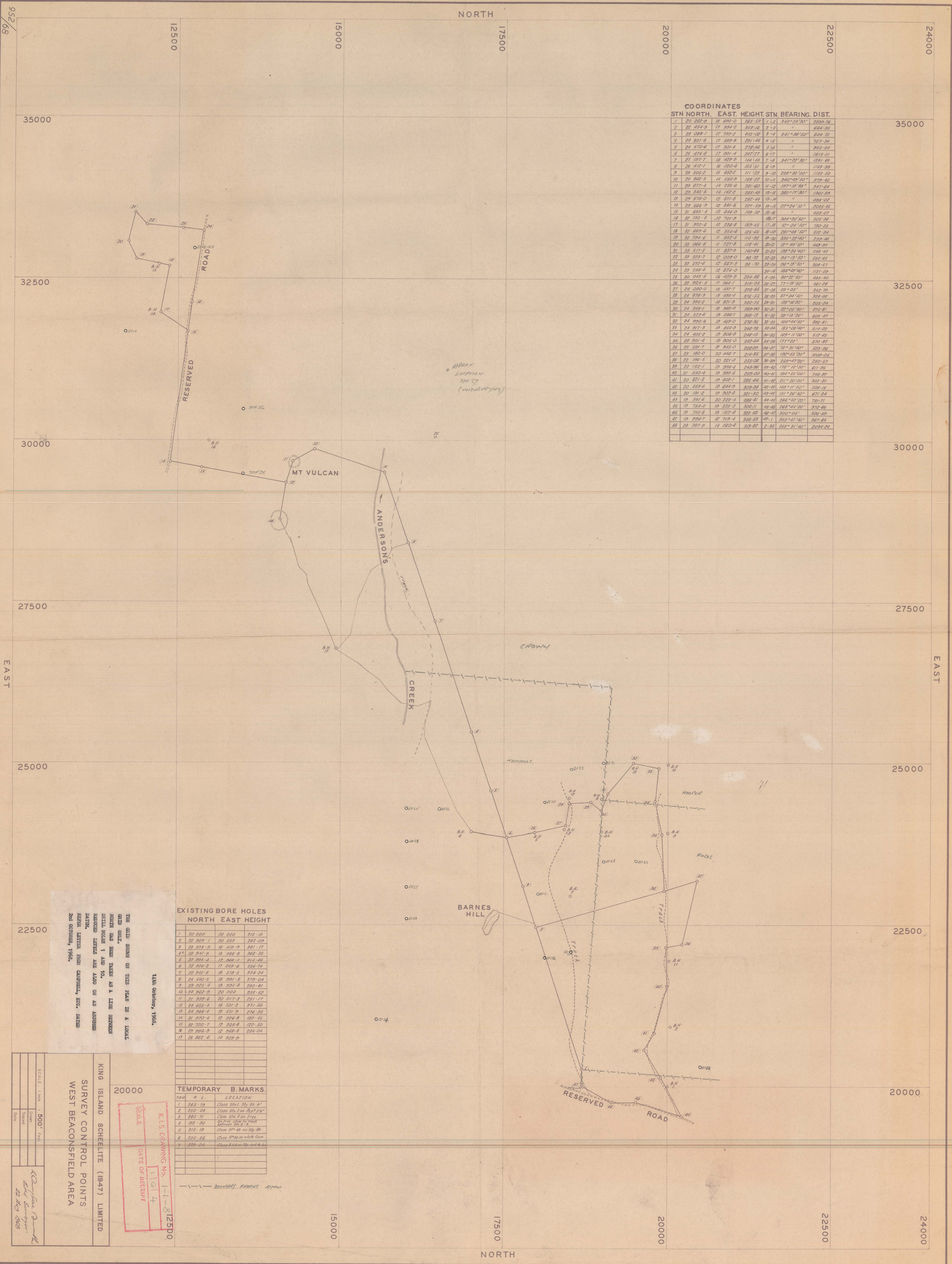


04101-X001

1" = 500'
SOUTH COASTAL PLAINS
WEST BEACONSFIELD AREA
1-1-8



COORDINATES

STN	NORTH	EAST	HEIGHT	STN	BEARING	DIST.
1	20 262.9	18 630.0	365.53	1-2	342°22'00"	2339.78
2	22 454.3	17 994.2	353.16	2-3	"	664.36
3	23 089.1	17 799.2	340.06	3-4	341°28'50"	804.70
4	23 851.6	17 539.8	321.46	4-5	"	757.34
5	24 570.6	17 301.4	278.46	5-6	"	853.64
6	25 474.8	17 001.4	247.77	6-7	"	1815.21
7	27 197.7	16 409.3	164.43	7-8	341°22'30"	1281.63
8	28 412.1	16 020.6	165.51	8-9	"	1153.38
9	29 505.2	15 658.2	111.23	9-10	288°32'00"	1123.52
10	29 862.3	14 586.6	168.22	10-11	240°49'50"	379.40
11	29 871.4	14 255.8	281.60	11-12	197°18'36"	3471.64
12	29 242.5	14 150.2	259.43	12-13	280°17'30"	1201.39
13	29 578.0	12 871.8	282.44	13-14	"	426.03
14	29 666.3	12 881.6	227.53	14-15	07°24'10"	2335.65
15	31 655.4	12 644.0	149.32	15-16	"	449.07
16	32 130.8	12 701.3	15.71	16-17	304°20'50"	505.36
17	31 970.6	12 228.8	163.45	17-18	10°24'50"	730.25
18	32 693.6	12 351.6	125.65	18-19	261°48'50"	512.24
19	32 724.4	11 852.5	110.25	19-20	335°22'50"	2329.46
20	33 066.6	11 727.8	118.41	20-21	28°46'10"	449.31
21	33 577.5	11 837.8	142.64	21-22	198°34'40"	258.47
22	33 223.7	12 009.0	85.70	22-23	35°18'50"	560.45
23	33 272.6	12 567.3	93.70	23-24	36°19'50"	308.47
24	33 238.6	12 674.0	24.18	24-25	188°40'40"	1121.00
25	30 043.3	16 429.3	234.88	25-26	80°22'50"	434.40
26	29 804.4	17 368.1	314.05	26-27	77°19'50"	481.28
27	29 030.0	18 491.7	218.85	27-28	39°25'	342.79
28	28 378.3	18 493.4	312.55	28-29	67°24'10"	329.82
29	28 395.2	18 821.0	362.75	29-30	128°40'00"	235.24
30	28 263.1	18 963.0	363.80	30-31	22°25'50"	376.81
31	28 523.6	18 082.7	368.12	31-32	39°21'20"	623.47
32	24 890.6	18 469.0	270.35	32-33	100°44'50"	302.81
33	24 947.3	18 854.3	246.78	33-34	183°08'10"	514.22
34	24 458.2	18 808.8	246.15	34-35	129°11'00"	512.65
35	29 201.6	18 805.0	242.84	35-36	177°12'	370.97
36	29 031.7	18 945.0	232.89	36-37	72°31'40"	523.28
37	29 180.0	20 446.7	214.85	37-38	126°45'00"	1539.05
38	29 186.5	20 221.0	255.08	38-39	243°47'00"	250.67
39	29 152.1	19 974.4	248.36	39-40	178°12'00"	811.26
40	21 540.4	18 939.6	259.00	40-41	134°55'00"	748.97
41	20 821.5	18 825.1	285.65	41-42	211°20'00"	302.21
42	20 869.4	18 644.3	309.34	42-43	149°11'50"	508.15
43	20 181.2	18 833.8	301.83	43-44	121°24'40"	871.34
44	19 546.6	20 229.4	286.81	44-45	286°52'00"	791.71
45	19 764.0	19 523.2	305.11	45-46	268°44'00"	370.68
46	19 745.8	19 152.6	322.82	46-47	300°04'	500.69
47	19 294.7	19 713.4	358.53	47-1	353°41'40"	247.65
48	18 787.3	14 060.6	313.82	2-36	262°31'40"	2034.24

EXISTING BORE HOLES

STN	NORTH	EAST	HEIGHT
1	20 000	20 000	316.13
2	20 909.1	20 053	282.03
3	23 973.3	18 413.3	281.17
4	23 841.3	18 388.8	365.35
5	23 394.4	17 948.1	314.06
6	22 338.2	17 003.6	254.74
7	22 940.8	18 519.5	324.24
8	24 140.5	18 381.8	278.04
9	23 252.4	18 334.8	292.81
10	24 962.6	20 000	235.52
11	21 335.6	20 017.3	251.17
12	24 455.4	18 501.2	371.58
13	24 268.4	19 471.3	276.35
14	31 370.6	12 826.8	189.45
15	28 720.7	12 205.8	122.50
16	29 296.3	12 269.2	234.04
17	26 862.3	14 223.3	

TEMPORARY B. MARKS.

STN	NORTH	EAST	HEIGHT	LOCATION
1	266.72			Close Stn. 5th Bl. 4'
2	350.08			Close Stn. 2 on Popl. 2 1/2'
3	280.71			Close Stn. 3 on Tree
4	192.30			Close Stn. 1 on Track
5	315.12			Close Stn. 4 on 4th Bl.
6	220.56			Close Stn. 3 on 4th Bl.
7	278.04			Close Stn. 4 on 5th Bl.

THE GRID SHOWN ON THIS PLAN IS A LOCAL GRID ONLY. NO OTHER BENCH MARKS HAVE BEEN TAKEN AS A FIELD INSTRUMENT HAS BEEN TAKEN AS A FIELD INSTRUMENT. REVISIONS TO THIS PLAN ARE ALSO ON AN ASSURED BASIS. REVISIONS TO THIS PLAN ARE ALSO ON AN ASSURED BASIS. REVISIONS TO THIS PLAN ARE ALSO ON AN ASSURED BASIS. DATED 24th OCTOBER, 1963.

14th October, 1963.

KING ISLAND SCHELLITE (1947) LIMITED
SURVEY CONTROL POINTS
WEST BEACONSFIELD AREA

SCALE 1 inch = 500' Feet

Checked
Therese
30/11

K. J. S. DRAWING No. 1-1-8 12500
SCALE 1 inch = 500' Feet
DATE OF REVISION 1/1/4

K. J. S. Surveyor
22/10/63

APPX Location 11/1/57 (unsurveyed)

Boundary Forest Approx