

TASMANIA 1:25 000 SERIES



EDDYSTONE 6046



PRODUCTION: Mapping Division, Lands Department, Hobart, 1981.

ACCURACY: Horizontal: 80% of well defined detail is within 12.5 metres of true position. Vertical: 50% of elevations are within 5 metres. These accuracies may not be achieved in areas of dense vegetation.

RELIABILITY: Topographic detail compiled from aerial photography flown 1979 with field verification 1981.

TOPOGRAPHY: Topographic names have been approved by the Nomenclature Board of Tasmania.

PUBLIC RIGHT OF WAY: Roads or tracks on this map do not necessarily indicate a public right of way.

To assist in correcting future editions of this map, users noting errors and omissions are invited to write to the Director of Mapping, GPO Box 44A, Hobart, Tasmania 7001.

© TASMANIAN GOVERNMENT 1981.

PROJECTION: Universal Transverse Mercator (UTM).

HORIZONTAL DATUM: Australian Geoid Datum 1986.

VERTICAL DATUM: Australian Height Datum (Tasmania) excepting offshore islands whose datum is mean sea level.

GRID: 1000 metre intervals of the Universal Transverse Mercator Grid, Zone 55 (Australian Map Grid), Australian National Spheroid.

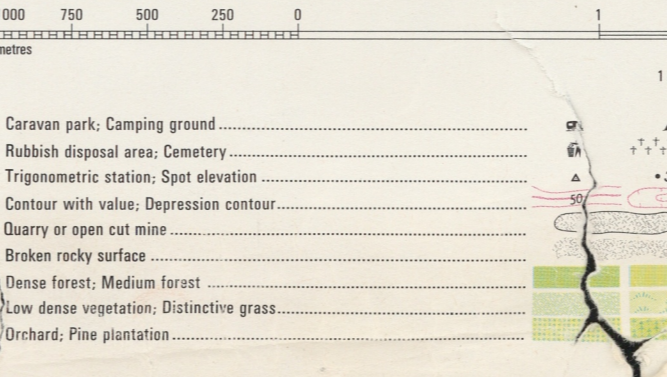
GRID VALUES: are shown in full at the south west corner of the map.

CONTOUR INTERVAL: 10 metres with 50 metre index contours.

WORLD GEODETIC SYSTEM 1972: To convert co-ordinates from this system to Australian Geoid Datum 1986, increase the value of latitudes by 5.4" and decrease the value of longitudes by 4.2". To obtain heights decrease satellite heights by 3 metres.

MAGNETIC VARIATION: True, Grid and Magnetic North are shown diagrammatically for the centre of this map. Magnetic North is correct for 1981 and moves easterly about 0.1" every three years.

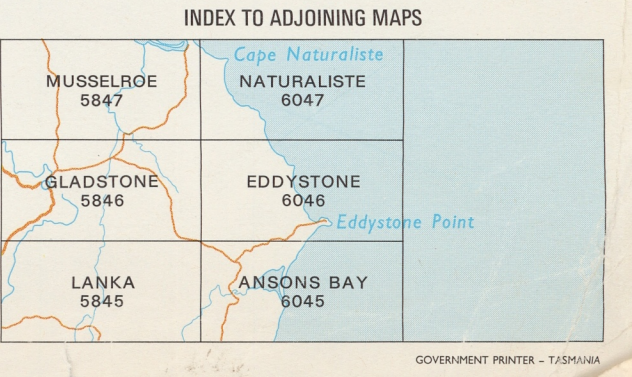
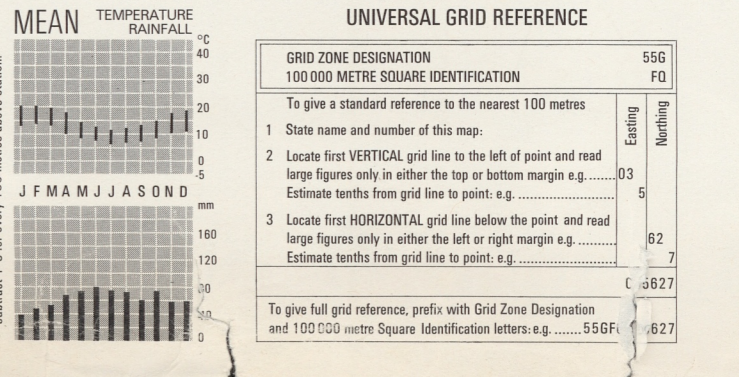
Built-up area with commercial centre	
Roads maintained for continuous public use	
Secondary road, Bridge	
Minor road	
Other roads	
Vehicular track, Gate	
Working track, Bridge	
Railway, Station	
Light railway	
Power transmission line and pylon positions	
Building, Feature of special interest, Ruin, Mine	
Post-office, Police station, Fire station, School	



Windbreak	
Swamp, Land subject to flooding	
Waterfall, Rapids	
Intact/abandoned or floodbank, Levee	
Tidal rocks or ledges, Offshore rock	
Lighthouse, Exposed wreck	
Sand, Tidal reef	
Saline coastal flat, Tidal flats	
Jetty, Launching ramp	

BOUNDARIES shown on this map are NOT authoritative. For full particulars please consult the Registrar-General's Department or the Lands Department. Property and land parcel boundaries are shown as at June 1981. Areas within proclaimed towns or less than two hectares are not depicted. To give a land parcel reference, prefix parcel number with municipal number.

Municipality name	LILYDALE
Municipality number	55
Ward name	JETSON
Ward boundary	
Town boundary	
Road boundary	
Boundary	



EDDYSTONE 6046