

TASMANIA 1:25 000 SERIES



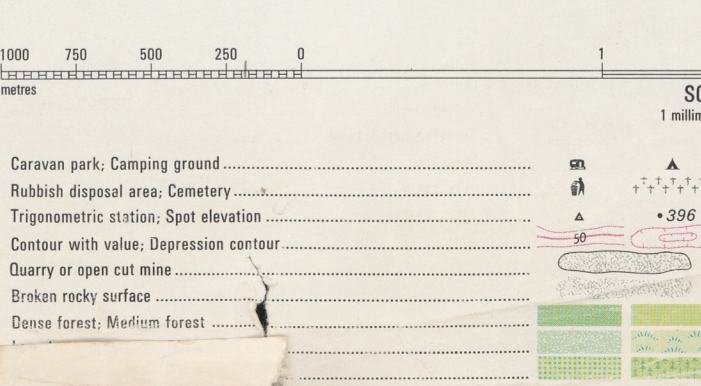
LYME REGIS 5848



PRODUCTION: Mapping Division, Lands Department, Hobart, 1981. ACCURACY: Horizontal, 90% of well defined detail is within 12.5 metres of true position. Vertical, 90% of elevations are within 5 metres. RELIABILITY: Topographic detail compiled from aerial photography by 1979 with field verification 1981. Nomenclature: Topographic names have been approved by the Nomenclature Board of Tasmania. PUBLIC RIGHT OF WAY: Roads or tracks on this map do not necessarily indicate a public right of way.

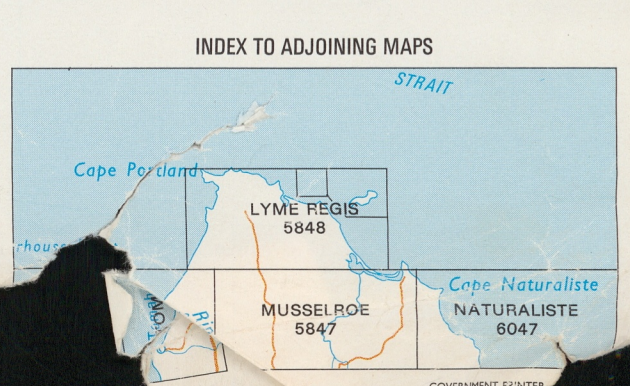
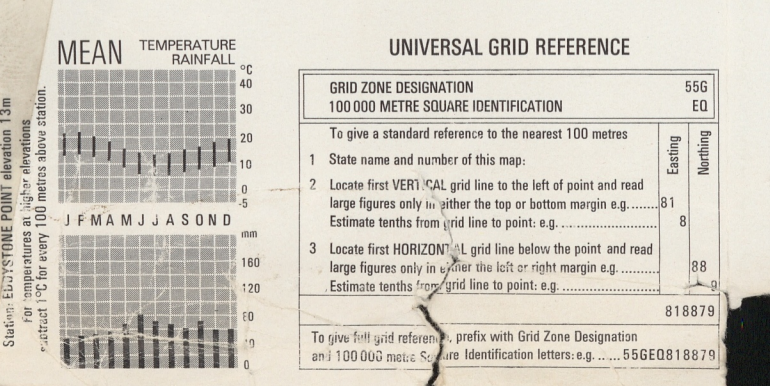
PROJECTION: Universal Transverse Mercator (UTM). HORIZONTAL DATUM: Australian Geodetic Datum 1966. VERTICAL DATUM: Australian Height Datum (Tasmania) excepting offshore islands whose datum is mean sea level. GRID: 1000 metre intervals of the Universal Transverse Mercator Grid, Zone 55 (Australian Map Grid, Australian National Standard). CONTOUR INTERVAL: 10 metres with 50 metre index contours. WORLD GEODETIC SYSTEM 1972: To convert co-ordinates from this system to Australian Geodetic Datum 1966, increase the value of latitudes by 3.3" and decrease the value of longitudes by 4.2". To obtain heights decrease satellite height by 3 m. MAGNETIC VARIATION: True Grid magnetic variation is shown diagrammatically for the centre of the sheet for 1981 and moves easterly about 0.1 m per year.

- Legend for roads: Built-up area with commercial centre, Primary road, Secondary road, Bridge, Minor road, Other roads, Vehicular track, Gate, Walking track, Bridge, Railway, Station, Light railway, Power transmission line and pylon positions, Building, feature of special interest, Plain, Mine.



- Legend for features: Caravan park, Camping ground, Rubbish disposal area, Cemetery, Triangulation station, Spot elevation, Contour with values, Depression contour, Quarry or open cast mine, Broken rocky surface, Dense forest, Medium forest, Windbreak, Swamps, Land subject to flooding, Wetland, Riparian, Indefinite shoreline or floodbank, Levee, Tidal reefs or ledge, Offshore rock, Lighthouse, Expired wreck, Sand, Tidal reef, Shallow water, Reef, Tide flats.

BOUNDARIES shown on this map are NOT authoritative. For full particulars please consult the Registrar-General's Department or the Lands Department. Property and land parcel boundaries are shown as at September 1981. Areas within predicted towns or less than two hectares are not depicted. To give a land parcel reference, prefix parcel number with municipal number.



LYME REGIS 5848