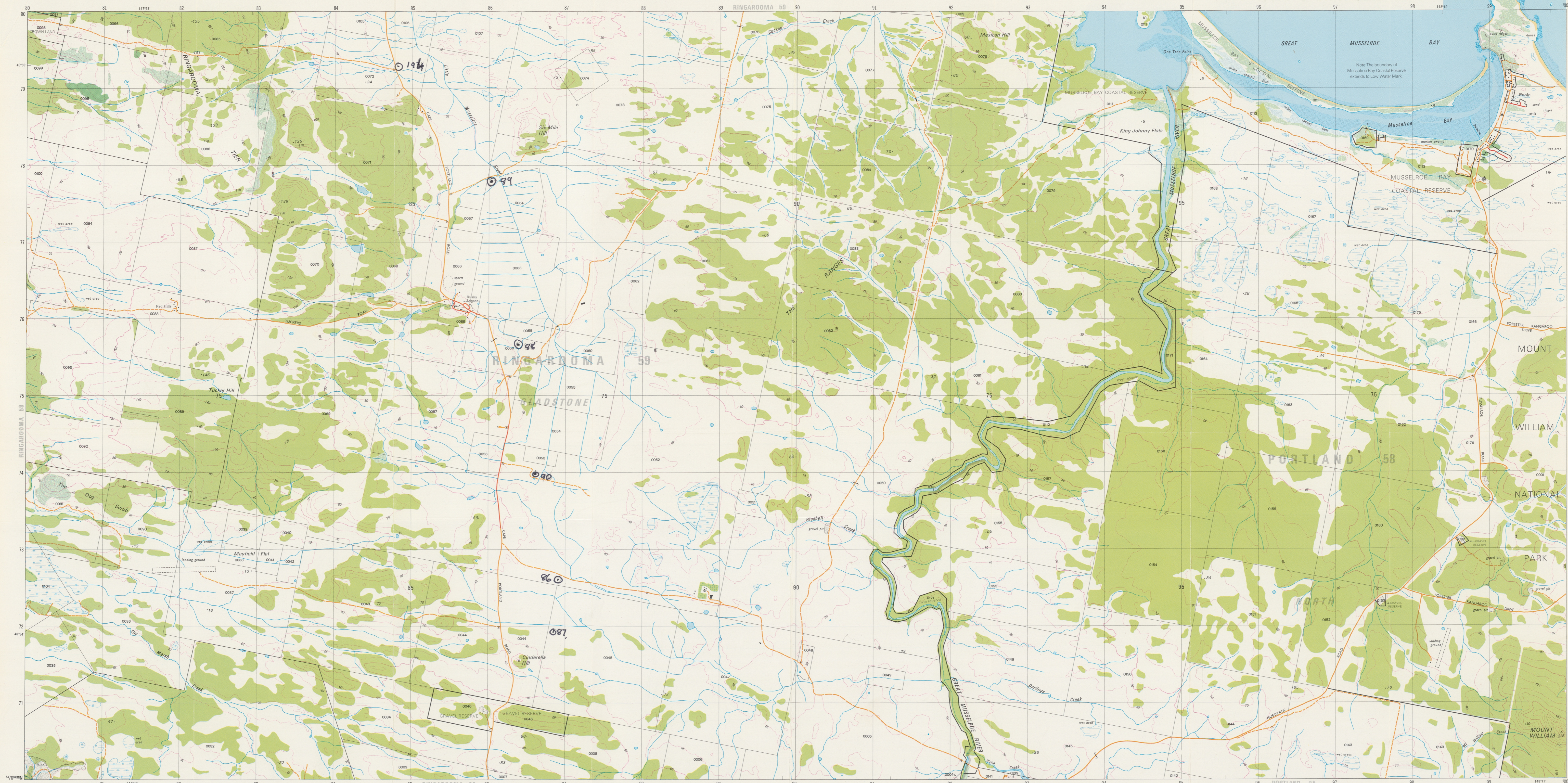


TASMANIA 1:25 000 SERIES



MUSSELROE 5847



PRODUCTION: Mapping Division, Lands Department, Hobart, 1981.

ACCURACY: Horizontal: 90% of well defined detail is within 12.5 metres of true position. Vertical: 90% of elevations are within 5 metres. These accuracies may not be achieved in areas of dense vegetation.

RELIABILITY: Topographic detail compiled from aerial photography (flown 1979 with field verification 1981 to Australian Geodetic Datum 1980, increase the value of latitudes by 0.3 and decrease the value of longitudes by 4.2". To obtain heights decrease satellite heights by 3 metres.

PUBLIC RIGHT OF WAY: Roads or tracks on this map do not necessarily indicate a public right of way.

To assist in correcting future editions of this map, users noting errors and omissions are invited to write to the Director of Mapping, GPO Box 444, Hobart, Tasmania, 7001.

© TASMANIAN GOVERNMENT 1981.

PROJECTION: Universal Transverse Mercator (UTM).

HORIZONTAL DATUM: Australian Geodetic Datum 1966.

VERTICAL DATUM: Australian Height Datum (Tasmania) excepting offshore islands whose datum is mean sea level.

GRID: 1000 metre intervals of the Universal Transverse Mercator Grid, Zone 59 (Australian Map Grid), Australian National Spheroid. Grid values are shown in full at the south west corner of the map.

CONTOUR INTERVAL: 10 metres with 10 metre index contours.

WORLD GEODETIC SYSTEM 1972: To convert co-ordinates from this system to Australian Geodetic Datum 1980, increase the value of latitudes by 0.3 and decrease the value of longitudes by 4.2". To obtain heights decrease satellite heights by 3 metres.

MAGNETIC VARIATION: True, Grid and Magnetic North are shown diagrammatically for the centre of this map. Magnetic North is correct for 1981 and moves easterly about 0.1° every three years.

Build-up area with commercial centre
 Roads maintained for continuous public use
 Roads of restricted use or access
 Walking track: Bridge
 Railway: Station
 Light railway
 Power transmission line and pylon positions
 Building: Feature of special interest, Ruin, Mine
 Post office, Police station, Fire station, School

Caravan park: Camping ground
 Rubbish disposal area: Cemetery
 Topographic station: Spot elevation
 Contour with value: Depression contour
 Quarry or open cut mine
 Broken rocky surface
 Dense forest: Medium forest
 Low dense vegetation: Distinctive grass
 Orchard: Pine plantation

Windbreak
 Swamp: Land subject to flooding
 Waterfall: Rapid
 Indefinite shoreline or floodbank: Levee
 Tidal rocks or ledge: Offshore rock
 Lighthouse: Exposed wreck
 Sand, Tidal reef
 Saline coastal flat: Tidal flats
 Jetty: Launching ramp

BOUNDARIES shown on this map are NOT authoritative. For full particulars please consult the Registrar-General's Department or the Lands Department. Property and land parcel boundaries are shown as at September 1981. Areas within proclaimed towns or less than two hectares are not depicted. To give a land parcel reference, prefix parcel number with municipal number.

Municipality name: LILYDALE
 Municipality number: 55
 Municipality boundary
 Ward name: JETSON
 Ward boundary
 Town boundary
 Reserve boundary
 Property boundary, Land parcel boundary and number: 0371

