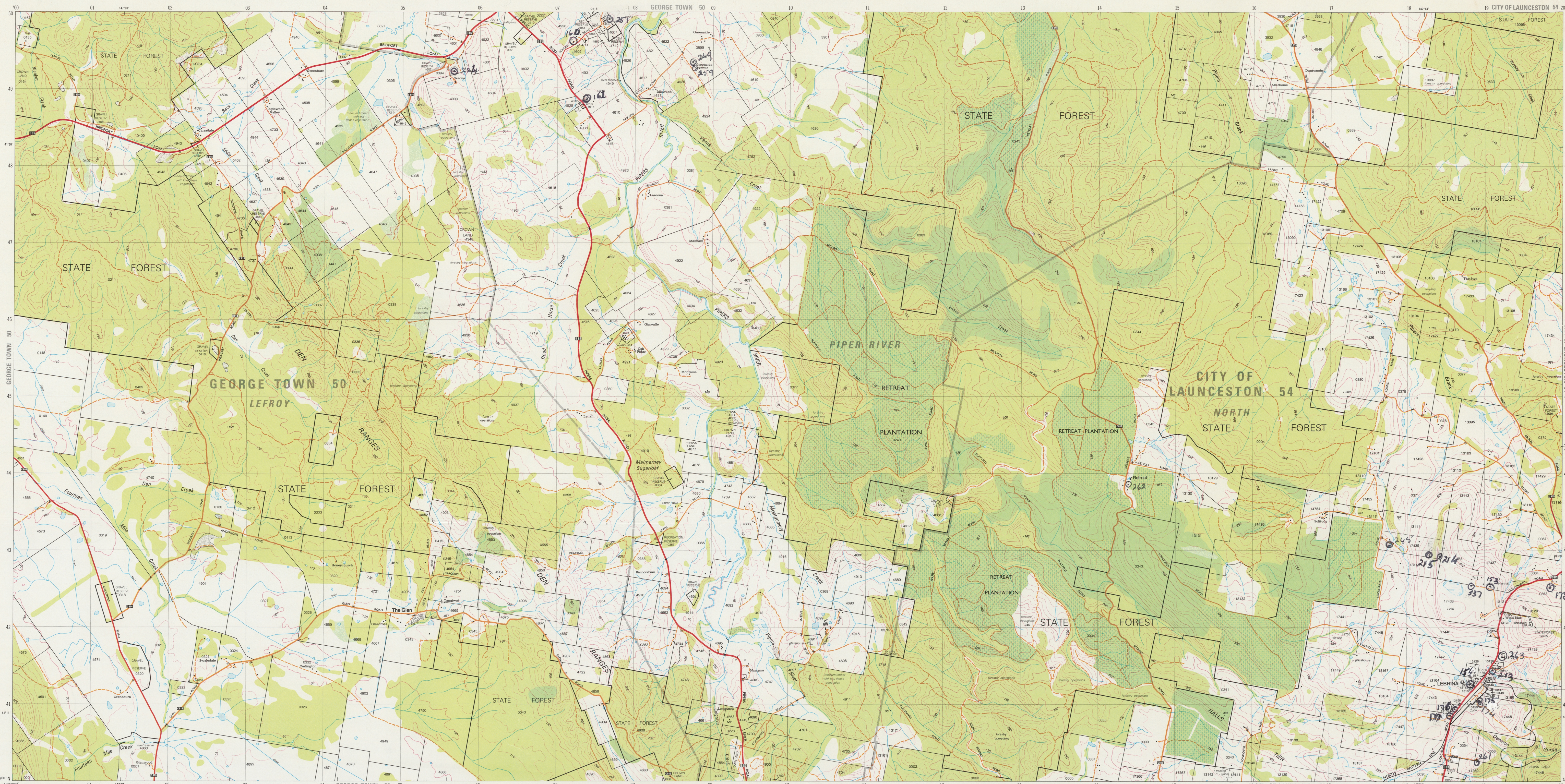


TASMANIA 1:25 000 SERIES

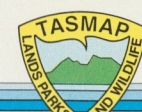


about this MAP This map, covering an area of 10x20 kilometres, shows highly detailed topography and subjects of general interest. Cadastral features include boundaries of Municipalities, Wards, Towns, Reserves, properties and parcels. A listing to help identify Certificate of Title, Deeds or Survey references for all land parcels is available upon request to Tasmap in Hobart. Maps in this series are available either flat or folded as a monochrome transparency.

RETREAT 5044 EDITION 2



For information about other published or unpublished mapping, aerial photography and satellite imagery, contact Tasmap at 134 Macquarie Street Hobart or write to: Tasmap G.P.O. Box 44A, Hobart, 7001



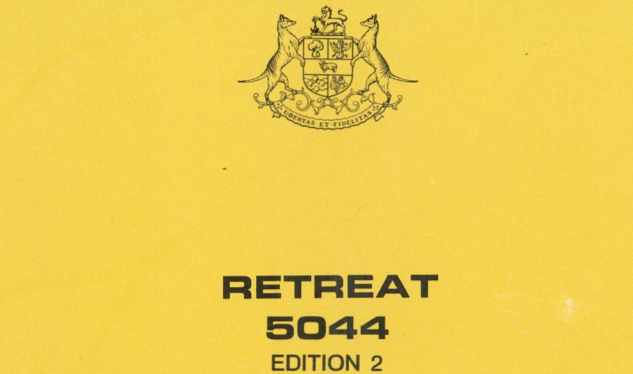
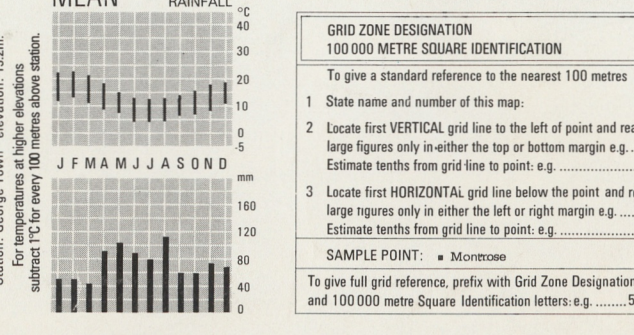
PRODUCTION: Mapping Division, Department of Lands, Parks and Wildlife, Hobart, 1988. ACCURACY: Horizontal: Not less than 90% of points of points of well defined detail are within 125 metres of their true positions at map scale. Vertical: Not less than 90% of elevations are within 1 metres of their true elevation. This accuracy may not be achieved in areas of dense vegetation. RELIABILITY: The information content of this map has been determined from aerial photography taken in 1984 and verified by field inspection undertaken in May 1988. It contains as far as possible, information appropriate to the scale, the geographical locality, and the general purpose of this map. NOMENCLATURE: Place names have been approved by the Nomenclature Board of Tasmania. PUBLIC RIGHT OF WAY: Roads on this map do not necessarily indicate a public right of way. REVISION: A ten yearly revision cycle is intended for this series. Users noting errors and omissions are invited to write to the Director of Mapping, GPO Box 44A, Hobart, Tasmania, 7001. © TASMANIAN GOVERNMENT 1988

PROJECTION: Universal Transverse Mercator (UTM). HORIZONTAL DATUM: Australian Geodesic Datum 1986. VERTICAL DATUM: Australian Height Datum (Tasmania) excepting offshore islands whose datum is mean sea level. GRID: 100 metre intervals of the Universal Transverse Mercator Grid, Zone 56 (Australian Map Grid), Australian National Spheroid. Grid values are shown in full at the south west corner of the map. CONTOUR INTERVAL: 10 metres with 50 metre index contours. WORLD GEODETIC SYSTEM 1972: To convert co-ordinates from this system to Australian Geodesic Datum 1986, increase the value of longitudes by 5.3", equivalent to 163 metres, and decrease the value of latitudes by 42", equivalent to 100 metres. To obtain heights decrease satellite heights by 1 metre. MAGNETIC VARIATION: True, Grid and Magnetic North are shown diagrammatically for the centre of the map. Magnetic North is correct for 1988 and moves easterly about 0.1" every two years.

- Residential area: Commercial buildings
Primary road with route number
Secondary road with route number
Major road with route number
Other road
Other roads with bridge
Other roads with gate
Vehicular track with gate
Walking track, horse trail (approximate position) with bridge
Railway with station: Places entered in National Estate Register
Power transmission line with pylon positions
Bulking: Feature of historic or special interest: Ruin: Mine
Post office: Police station: Fire station: School

- Caravan park; Camping ground; Public toilet
Disposal area; Visitor information centre; Cemetery
Picnic area; Trig station beacon; Spot elevation
Contour with value; Depression contour
Quarry, pit or open cut mine
Rock scree; Broken rocky surface
Dense forest; Medium forest
Low dense vegetation; Distinctive grass
Orchard; Pine plantation
Eucalypt plantation; Submerged trees
Swamp, perennial; intermittent
Wetland
Wet area: Subject to flooding
Waterfall; Rapids
Indefinite shoreline or foreshore; Levee
Tidal rocks or ledge; Offshore rock
Navigation light or lighthouse; Exposed wreck
Sand; Tidal reef
Saline coastal flat; Tidal flats
Jetty; Launching ramp

BOUNDARIES shown on this map are NOT authoritative. For full particulars please consult the Registrar-General's Division, Law Department, or the Survey Division, Department of Lands, Parks and Wildlife. Areas within unincorporated towns or less than two hectares may not be depicted. Boundaries of Crown Land (including Reserves) extend to low water mark. To give a land parcel reference, prefix parcel number with municipal number. To use this number to gain title or survey information please consult Tasmap's Unique Parcel Identification Register. Property and parcel boundaries are shown as at February 1987. Municipality name and number
Ward name
Ward boundary
Town boundary: Other administrative boundaries
Reserve boundary, Vicinity or grazing symbol
Property boundary: Land parcel boundary and number
Boundary location uncertain or indefinite



RETREAT 5044 EDITION 2