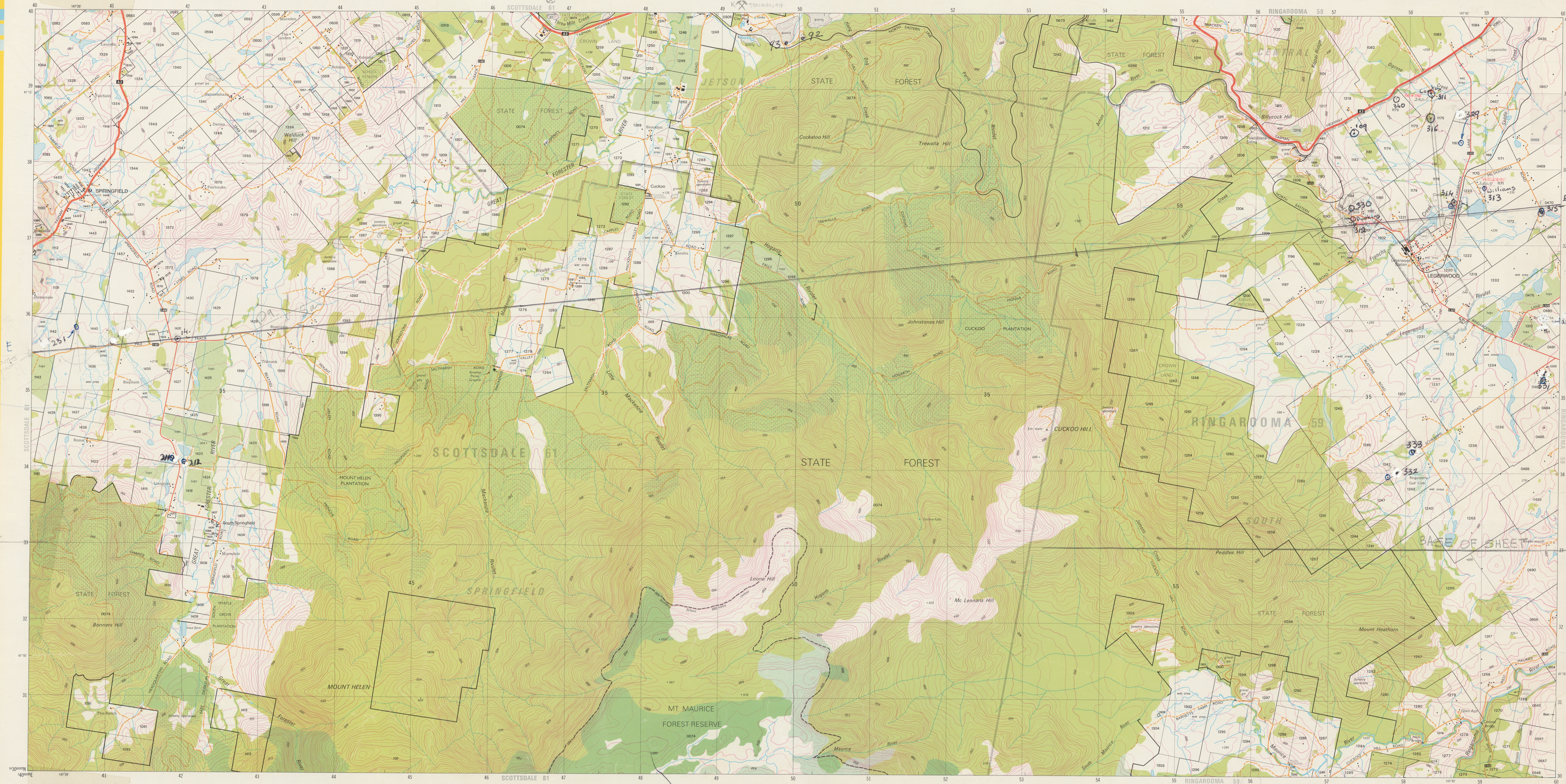


TASMANIA 1:25 000 SERIES



SPRINGFIELD 5443

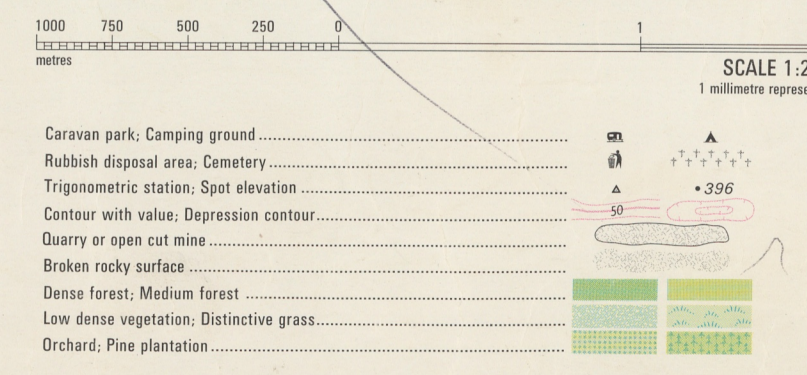


**PROJECTION:** Mapping Division, Lands Department, Hobart.  
**VERTICAL DATUM:** 263 metres of true position.  
**ACCURACY:** Horizontal: 90% of well defined details within 12.5 m. Vertical: 90% of elevations are within 5 metres. These accuracies apply to dense vegetation.  
**DATE:** 1983 compiled from aerial photography in 1980.  
**SCALE:** 1:25 000.  
**RIGHT OF WAY:** Roads or tracks on this map do not necessarily indicate a public right of way.  
 To assist in correcting future editions of this map, users noting errors and omissions are invited to write to the Director of Mapping, GPO Box 444, Hobart, Tasmania, 7001.  
 © TASHMANIAN GOVERNMENT 1983.

**PROJECTION:** Universal Transverse Mercator (UTM).  
**HORIZONTAL DATUM:** Australian Geodetic Datum 1986.  
**VERTICAL DATUM:** Australian Height Datum (Tasmania) excepting offshore islands whose datum is mean sea level.  
**GRID:** 1000 metre intervals of the Universal Transverse Mercator Grid, Zone 55 (Australian Map Grid). Australian National Spheroid.  
**CONTOUR INTERVAL:** 10 metres with 50 metre index contours.  
**WORLD GEODETIC SYSTEM 1972:** To convert co-ordinates from this system to Australian Geodetic Datum 1986, increase the value of latitude by 0.5" and decrease the value of longitude by 4.2". To obtain heights decrease satellite heights by 1 metre.  
**MAGNETIC VARIATION:** True, Grid and Magnetic North are shown diagrammatically for the centre of this map. Magnetic North is correct for 1983 and moves easterly about 0.1° every two years.

**Legend:**

- Built-up area with commercial centre
- Roads maintained for continuous public use
  - Primary road, Route number
  - Secondary road, Route number
  - Minor road, Route number
  - Other roads, Bridge
  - Vehicle track, Gate
- Roads of restricted use or access
- Walking track, Bridge
- Railway, Station
- Light railway
- Power transmission line and pylon positions
- Building: Feature of special interest, Ram, Mine
- Post office, Police station, Fire station, School

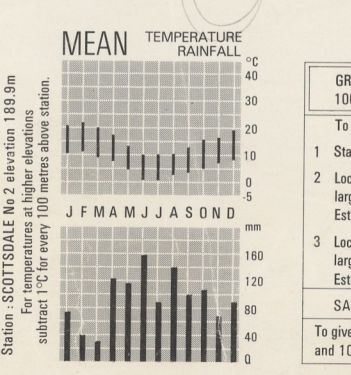


**Legend:**

- Caravan park, Camping ground
- Rubbish disposal area, Cemetery
- Trogonometric station, Spot elevation
- Contour with value, Depression contour
- Quarry or open cut mine
- Broken rocky surface
- Dense forest, Medium forest
- Low dense vegetation, Distinctive grass
- Orchard, Pine plantation
- Windbreak
- Swamp, Land subject to flooding
- Waterfall, Rapids
- Indefinite shoreline or headbank, Levee
- Tidal rocks or ledge, Offshore rock
- Lighthouse, Exposed wreck
- Sand, Tidal reef
- Saline coastal flat, Tidal flats
- Jetty, Launching ramp

**BOUNDARIES** shown on this map are NOT authoritative. For full particulars please consult the Registrar-General's Department or the Lands Department. Property and land parcel boundaries are shown as at March 1983. Areas within proclaimed towns or less than two hectares are not depicted. To give a land parcel reference, prefix parcel number with municipal number.

Municipality name: LILYDALE 55  
 Municipality number: 55  
 Ward name: JETSON  
 Ward boundary:  
 Town boundary:  
 Reserve boundary:  
 Property boundary, Land parcel boundary and number: 0371



**UNIVERSAL GRID REFERENCE**

GRID ZONE DESIGNATION: 55G ED  
 100 000 METRE SQUARE IDENTIFICATION: 5443  
 To give a standard reference to the nearest 100 metres:  
 1 State name and number of the map.  
 2 Locate first VERTICAL grid line to the left of point and read large figures only in either the top or bottom margin e.g. 5443  
 Estimate tenths from grid line to point e.g. 3  
 3 Locate first HORIZONTAL grid line below the point and read large figures only in either the left or right margin e.g. 55G  
 Estimate tenths from grid line to point e.g. 3  
**SAMPLE POINT:** Cuckoo Hill 533345  
 To give full grid reference, prefix with Grid Zone Designation and 100 000 metre square identification letters e.g. 55G ED 533345

