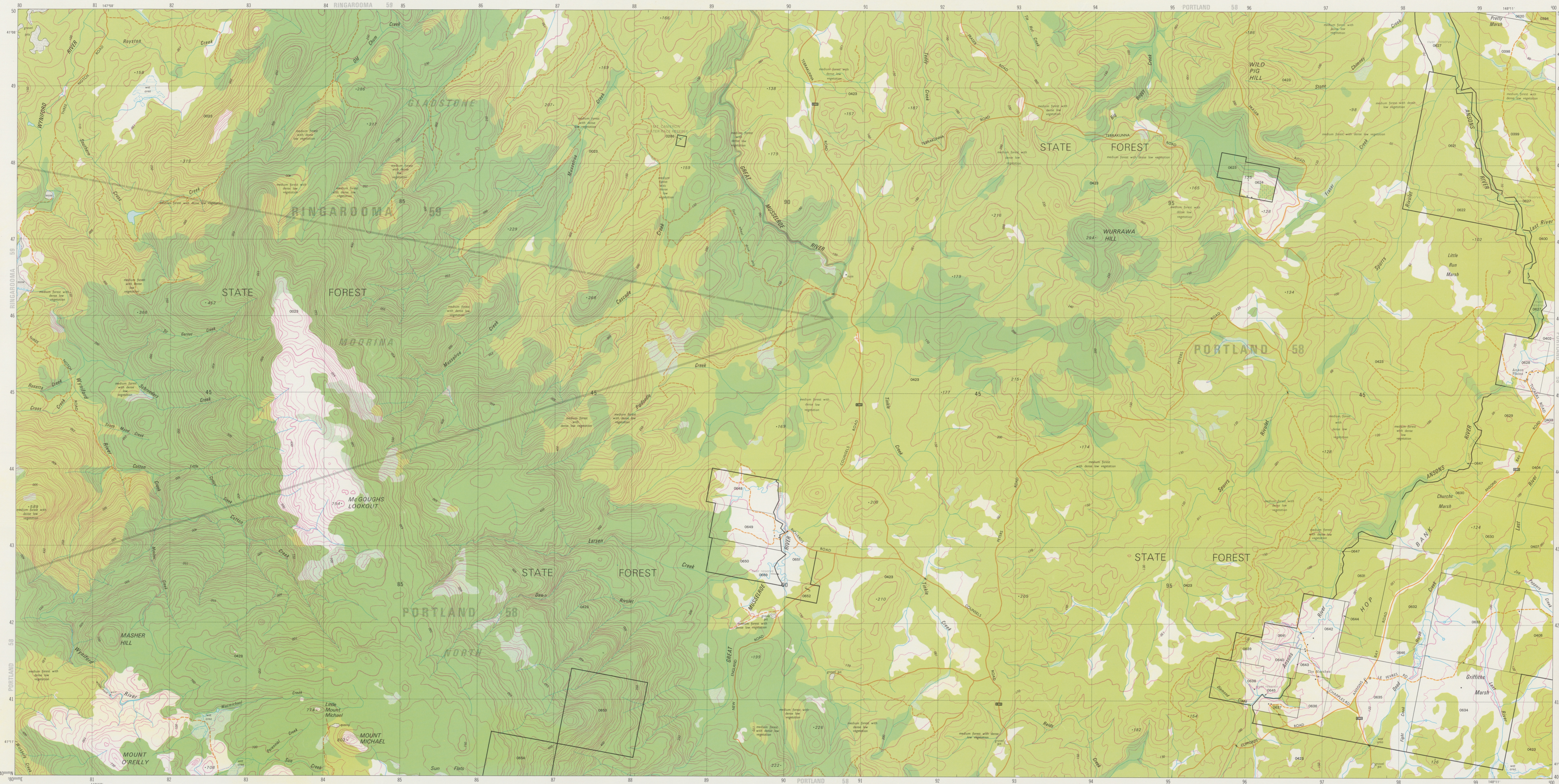


TASMANIA 1:25 000 SERIES



SPURRS RIVULET 5844



**PRODUCTION:** Mapping Division, Lands Department, Hobart, 1982.

**ACCURACY:** Horizontal: 90% of well defined detail is within 12.5 metres of true position. Vertical: 90% of elevations are within 5 metres. These accuracies may not be achieved in areas of dense vegetation.

**RELIABILITY:** Topographic detail compiled from aerial photography flown 1981 with field verification, 1982.

**ONOMATOCLASTIC:** Topographic names have been approved by the Nomenclature Board of Tasmania.

**PUBLIC RIGHT OF WAY:** Roads or tracks on this map do not necessarily indicate a public right of way.

To assist in correcting future editions of this map, users noting errors and omissions are invited to write to the Director of Mapping, PO Box 444, Hobart, Tasmania, 7001.

© TASMANIAN GOVERNMENT 1982.

**PROJECTION:** Universal Transverse Mercator (UTM).

**HORIZONTAL DATUM:** Australian Geodesic Datum 1986.

**VERTICAL DATUM:** Australian Height Datum (Tasmania) excepting offshore islands where datum is mean sea level.

**GRID:** 1000 metre intervals of the Universal Transverse Mercator Grid, Zone 55 (Australian Map Grid), Australian National Sovereign.

**GRID VALUES:** are shown in full at the south west corner of the map.

**CONTOUR INTERVAL:** 10 metres with 50 metre index contours.

**WORLD GEODETIC SYSTEM 1972:** To convert coordinates from this system to Australian Geodesic Datum 1986, increase the value of latitudes by 5.3" and decrease the value of longitudes by 4.2". To obtain heights decrease satellite heights by 2 metres.

**MAGNETIC VARIATION:** True, Grid and Magnetic North are shown diagrammatically for the centre of this map. Magnetic North is correct for 1982 and moves easterly about 0.1" every two years.

Build-up area with commercial centre	
Roads maintained for continuous public use	Primary road, Route number
	Secondary road, Route number
Roads of restricted use or access	Minor road, Route number
	Other roads, Bridge
	Vehicular track, Gate
Walking track, Bridge	
Railway, Station	
Power transmission line and pylons positions	
Building, Features of special interest, Ruin, Mine	
Post office, Police station, Fire station, School	

1000 750 500 250 0 metres	
Caravan park, Camping ground	
Rubbish disposal area, Cemetery	
Trigonometric station, Spot elevation	
Contour with value, Depression contour	
Quarry or open cut mine	
Lighthouse, Exposed wreck	
Broken rocky surface	
Dense forest, Medium forest	
Low dense vegetation, Distinctive grass	
Orchard, Fine plantation	

Windbreak	
Swamp, Land subject to flooding	
Waterfall, Rapids	
Indefinite shoreline or floodbank, Levee	
Tidal rocks or ledge, Offshore rock	
Lighthouse, Exposed wreck	
Sand, Tidal reef	
Low dense vegetation, Distinctive grass	
Saline coastal flat, Tidal flats	
Jetty, Launching ramp	

**BOUNDARIES** shown on this map are NOT authoritative. For full particulars please consult the Registrar-General's Department or the Lands Department. Property and land parcel boundaries are shown as at March 1982. Areas within proclaimed towns or less than two hectares are not depicted. To give a land parcel reference, prefix parcel number with municipal number.

Municipality name: **LILYDALE**

Municipality number: **55**

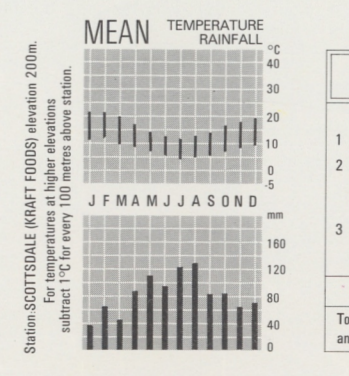
Ward name: **JETSON**

Ward boundary:

Town boundary:

Reserve boundary:

Property boundary: Land parcel boundary and number:



**UNIVERSAL GRID REFERENCE**

GRID ZONE DESIGNATION: **55G**

100 000 METRE SQUARE IDENTIFICATION: **EQ**

To give a standard reference to the nearest 100 metres

- State name and number of this map.
- Locate first VERTICAL grid line to the left of point and read large figure only in either top or bottom margin e.g. 84. Estimate smaller figure from grid line to point e.g. 4.5.
- Locate first HORIZONTAL grid line below the point and read large figure only in either left or right margin e.g. 41. Estimate smaller figure from grid line to point e.g. 0.5.

To give full grid reference, prefix with Grid Zone Designation and 100 000 metre Square Identification letters e.g. 55EQ844505

SAMPLE POINT: **802- MOUNT MICHAEL** 843405

