

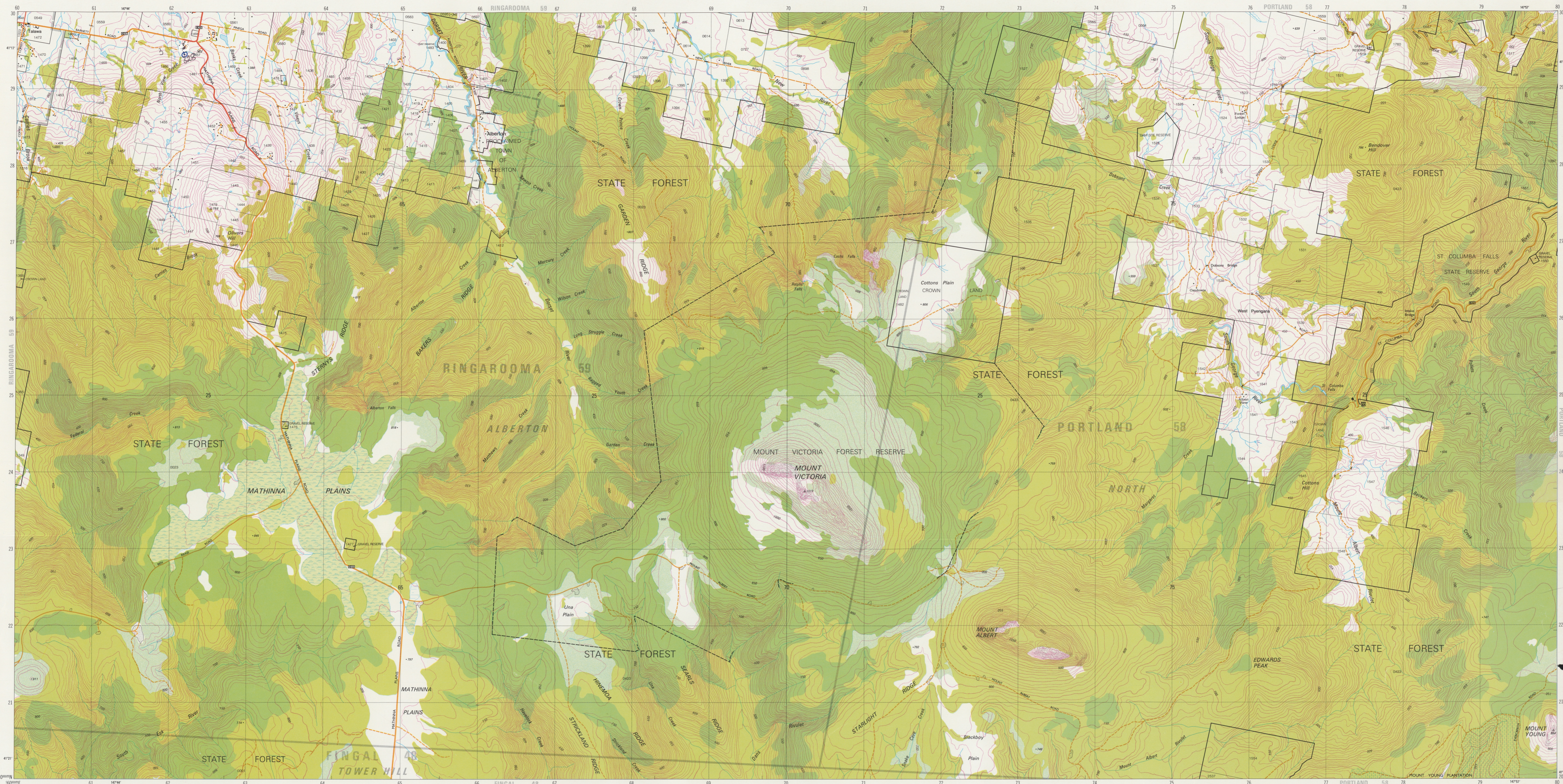


about this MAP

This map, covering an area of 10x20 kilometres, shows highly detailed topography and subjects of general interest. Coastal features include boundaries of Municipalities, Wards, Towns, Reserves, properties and parcels. Maps in this series are available either flat or folded or as a monochrome transparency.

VICTORIA 5642 EDITION 1

For information about other published or unpublished maps, aerial photography and satellite imagery, contact Tasmap at 154 Macquarie Street, Hobart or write to: Tasmap, P.O. Box 444, Hobart, 7001



PROJECTION: Universal Transverse Mercator (UTM).
HORIZONTAL DATUM: Australian Geodetic Datum 1966.
VERTICAL DATUM: Australian Height Datum (Tasmanian) excepting offshore islands whose datum is mean sea level.
GRID: 1000 metre intervals of the Universal Transverse Mercator Grid, Zone 59 (Australian Map Grid, Australian National Spheroid). Grid values are shown in full at the south west corner of the map.
ACCURACY: Horizontal: 90% of well defined detail is within 15 metres of true position. Vertical: 90% of elevations are within 5 metres. These accuracies may not be achieved in areas of dense vegetation.
RELIABILITY: Topography compiled from aerial photography flown 1983 with field verification 1985. Place names have been approved by the Nomenclature Board of Tasmania.
NOMENCLATURE: Place names on this map do not necessarily indicate a public right of way.
REVISION: A five yearly revision cycle is intended for this series. Users noting errors and omissions are invited to write to the Director of Mapping, GPO Box 444, Hobart, Tasmania, 7001.
© TASMANIAN GOVERNMENT 1985

Scale: 1:25 000
1 millimetre on this map represents 25 metres on the ground

Scale bar: 0 to 4 kilometres

Grid Zone Designation: RINGAROOMA 59
100 000 METRE SQUARE IDENTIFICATION: 5442

MEAN TEMPERATURE RAINFALL: Ross 60 SOUTH

INDEX TO ADJOINING MAPS: SPRINGFIELD 5443, RINGAROOMA 5643, BLUE TIER 5643, MAURICE 5442, VICTORIA 5642, PYENGANA 5642, BEN NEVIS 5441, SADDLEBACK 5641, BRILLIANT 5641

BOUNDARIES shown on this map are NOT authoritative. For full particulars please consult the Registrar-General's Division, Law Department, or the Survey Division, Lands Department. Areas within proclaimed towns or less than two hectares may not be depicted. Boundaries of Crown Land (including Reserve) extend to low water mark. To give a land parcel reference, prefix parcel number with municipal number. To use this number to gain title or survey information please consult the Mapping Division. Property and parcel boundaries are shown as at July 1985.

Legend:

- Residential area; Commercial buildings
- Roads maintained for continuous public use
- Roads of restricted use or access
- Walking track or horse trail (approximate position) with bridge
- Railway with station; Places entered in National Estate Register
- Power transmission line and pylon positions
- Building; Feature of historic or special interest; Ruin; Mine
- Post office; Police station; Fire station; School
- Caravan park; Camping ground; Public toilets
- Picnic area; Trig station beacon; Spot elevation
- Contour with value; Depression contour
- Quarry; pit or open cut mine
- Rock scree; Broken rocky surface
- Dense forest; Medium forest
- Low dense vegetation; Disturbed grass
- Orchard; Pine plantation
- Eucalypt plantation; Submerged trees
- Swamp
- Windbreak
- Weir area; Subject to flooding
- Waterfall; Rapids
- Indefinite shoreline or floodbank; Levee
- Tidal rocks or ledge; Offshore rock
- Navigation light or lighthouse; Exposed wreck
- Sand; Tidal reef
- Saline coastal flat; Tidal flats
- Jetty; Launching ramp