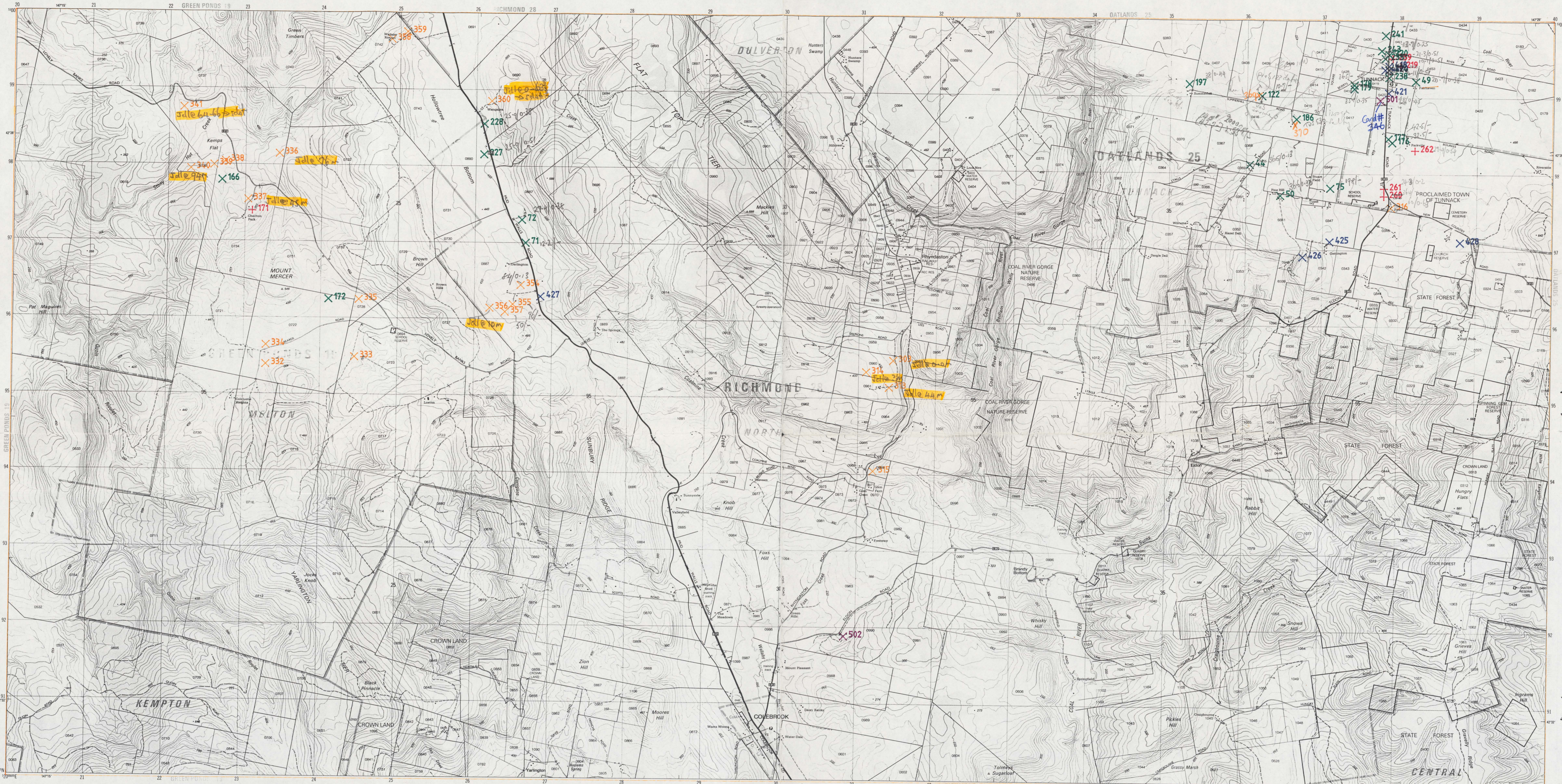


# COLEBROOK

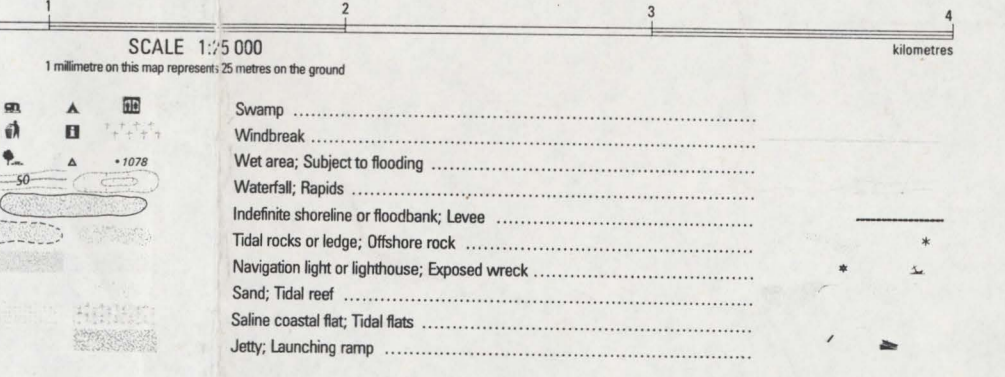


PRODUCTION: Mapping Division, Lands Department, Hobart, 1985.  
 ACCURACY: Horizontal: 90% of well defined detail is within 12.5 metres of true position. Vertical: 90% of elevations are within 5 metres. These accuracies may not be achieved in areas of dense vegetation.  
 RELIABILITY: Topography compiled from aerial photography from 1983 with field verification 1985.  
 Nomenclature: Place names have been approved by the Nomenclature Board of Tasmania.  
 PUBLIC RIGHT OF WAY: Roads on this map do not necessarily indicate a public right of way.  
 REVISION: A five yearly revision cycle is intended for this series. Users noting errors and omissions are invited to write to the Director of Mapping, GPO Box 44, Hobart, Tasmania, 7001.  
 © TASMANIAN GOVERNMENT 1985

PROJECTION: Universal Transverse Mercator (UTM).  
 HORIZONTAL DATUM: Australian Geodesic Datum 1980.  
 VERTICAL DATUM: Australian Height Datum (Mean Sea Level).  
 GRID: 1000 metre intervals of the Universal Transverse Mercator Grid, Zone 59 (Australian Map Grid, Australian National Grid).  
 CONTOUR INTERVAL: 10 metres with 50 metre index contours.  
 WORLD GEODETIC SYSTEM 1972: To convert co-ordinates from this system to Australian Geodesic Datum 1980, increase the value of latitude by 5.2", equivalent to 183 metres, and decrease the value of longitude by 4.5", equivalent to 99 metres. To obtain height increase values are shown in full at the south west corner of this system to Australian Geodesic Datum 1980, increase the value of latitude by 5.2", equivalent to 183 metres, and decrease the value of longitude by 4.5", equivalent to 99 metres.  
 MAGNETIC VARIATION: True, Grid and Magnetic North are shown diagrammatically for the centre of this map. Magnetic North is correct for 1985 and moves easterly about 0.1" every two years.

- |   |  |
|---|--|
| Residential area; Commercial buildings                          |  |
| Roads maintained for continuous public use                      |  |
| Roads of restricted use or access                               |  |
| Walking track or horse trail (approximate position with bridge) |  |
| Power transmission line and pylon positions                     |  |
| Building; Feature of historic or special interest; Ruin; Mine   |  |
| Post office; Police station; Fire station; School               |  |

- |  |  |
|--|--|
| Caravan park; Camping ground; Public toilets     |  |
| Picnic area; Trig station beacon; Spot elevation |  |
| Quarry; pit or open cut mine                     |  |
| Rock scree; Broken rocky surface                 |  |
| Dense forest; Medium forest                      |  |
| Low dense vegetation; Distinctive grass          |  |
| Orchard; Pine plantation                         |  |
| Eucalypt plantation; Submerged trees             |  |



BOUNDARIES shown on this map are NOT authoritative. For full particulars please consult the Registrar-General's Division, Law Department; or the Survey Division, Lands Department. Areas within proclaimed towns or less than two hectares may not be depicted. Boundaries of Crown Land (including Reserves) extend to low water mark. To give a land parcel reference, prefix parcel number with municipal number. To use the number to gain site or survey information please consult the Mapping Division. Property and parcel boundaries are shown as at September 1985.

Municipality name and number: **ROSS 60**

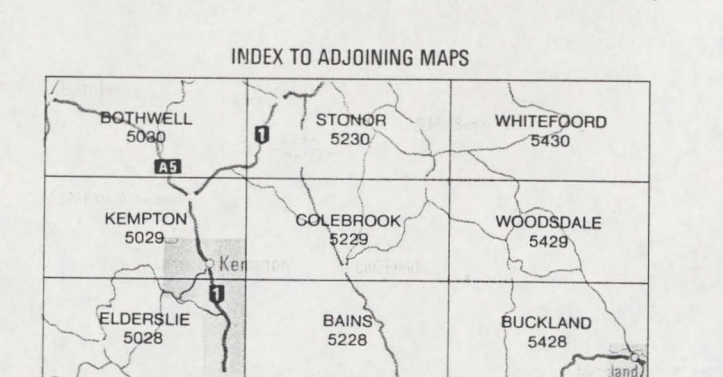
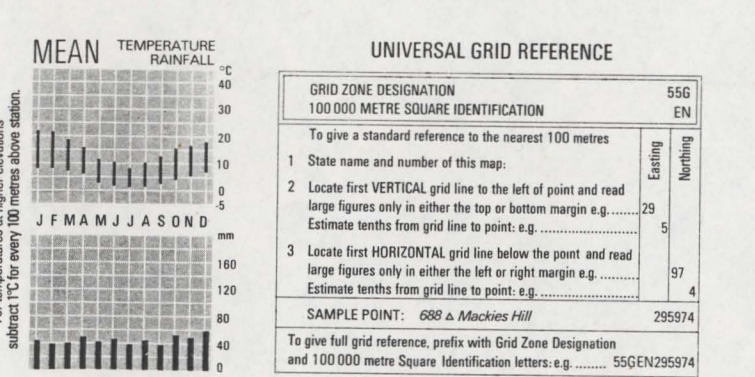
Ward name: **SOUTH**

Ward boundary; Other administrative boundaries

Reserve boundary; Vicinal or joining symbol

Property boundary; Land parcel boundary and number

Boundary location uncertain or indefinite



+ 195  
X 196

X 123

X 194

~~X 1332~~ 242

X 130

X 241 -/-

JUNNAUR

X 243 -13.9/0.25

X 2320 -13.9/-

X 23559 -21.3/0.53

X 18219 -10.1/0.51

No 44:36.5/0.13

X 224

X 238 11/0.51

X 49 20.9/0.38

~~X 178~~

X 122

X 421  
X 501

X 186

X 1776

+ 262

X 44