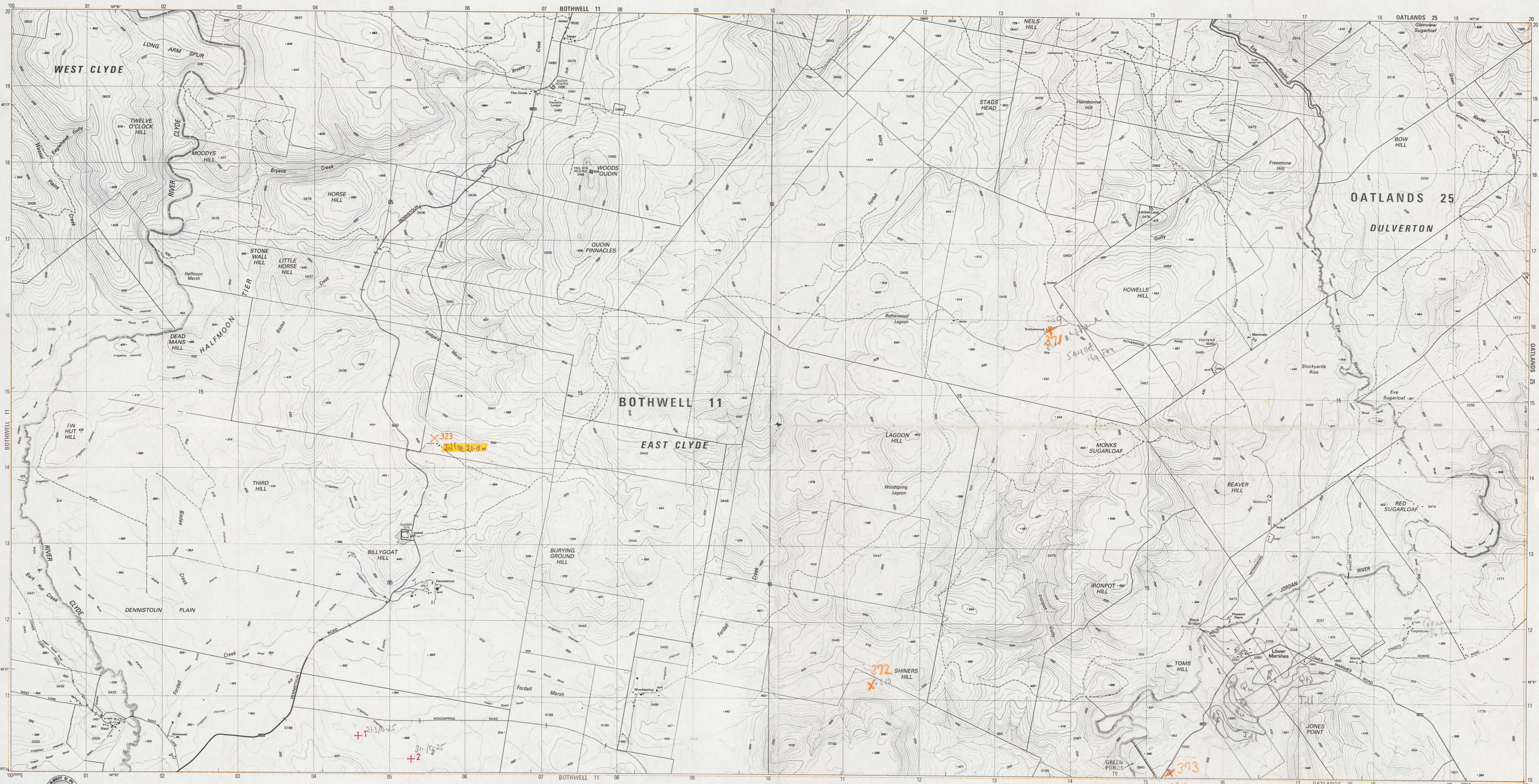


DENNISTOUN



PRODUCTION: Mapping Division, Department of Environment and Planning, Hobart, 1992.
ACCURACY: Horizontal: Not less than 90% of points of well defined detail are within 12.5 metres of their true positions at map scale.
VERTICAL: Not less than 90% of elevations are within 5 metres of their true elevation. This accuracy may not be achieved in areas of dense vegetation.
RELIABILITY: The information content of this map has been determined from aerial photography taken in Nov 1991 and verified by field inspection undertaken in Dec 1991. It contains as far as possible information appropriate to the scale, the geographical locality, and the general purpose of this map.
NOMENCLATURE: Place names have been approved by the Nomenclature Board of Tasmania.
PUBLIC RIGHT OF WAY: Roads on the map do not necessarily indicate a public right of way.
REVISION: A five yearly revision cycle is intended for this series. Users noting errors and omissions are invited to write to the Director of Mapping, GPO Box 444, Hobart, Tasmania, 7001.
 © TASMANNAN GOVERNMENT 1992

PROJECTION: Universal Transverse Mercator (UTM)
HORIZONTAL DATUM: Australian Geodesic Datum 1966.
VERTICAL DATUM: Australian Height Datum (Tasmanian) excepting offshore islands whose datum is mean sea level.
GRID: 1000 metre intervals of the Universal Transverse Mercator Grid, Zone 55 (Australian Map Grid), Australian National Geospatial Grid values are shown in full at the south west corner of the map.
CONTOUR INTERVAL: 10 metres with 50 metre index contours.
WORLD GEODETIC SYSTEM 1972: To convert co-ordinates from this system to Australian Geodesic Datum 1966, increase the value of latitudes by 5.7" equivalent to 163 metres, and decrease the value of longitudes by 4.3" equivalent to 89 metres. To obtain heights increase satellite heights by 1 metre.
MAGNETIC VARIATION: True, Grid and Magnetic North are shown diagrammatically for the centre of this map. Magnetic North is correct for 1992 and moves easterly about 0.1" every two years.

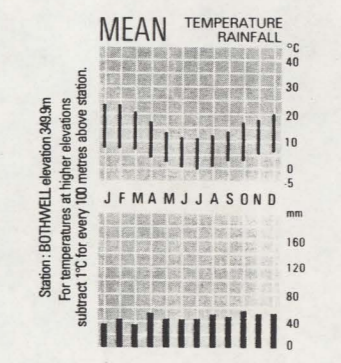
- Residential area; Commercial buildings**
- Primary road with route number
 - Secondary road with route number
 - Minor road with route number
 - Other road
 - Other roads with bridge
 - Vehicular track with gate
 - Walking track, horse trail (Approximate position) with bridge
 - Railway track with station, Place entered in National Estate Register
 - Power transmission line with pylon positions
 - Building, Feature of historic or special interest; Run; Mine
 - Post office, Police station, Fire station, School

- Caravan park; Camping ground; Public toilets
 Disposal area; Visitor information centre; Cemetery
 Picnic area; Trig station beacon; Spot elevation
 Wet area; Subject to flooding
 Waterfall; Rapids
 Heavily vegetated shoreline or floodbank; Levee
 Tidal rocks or ledge; Offshore rock
 Navigation light or lighthouse; Exposed wreck
 Sand; Tidal reef
 Saline coastal flat; Tidal flats
 Jetty; Launching ramp

- Swamp, perennial; intermittent
 Wet area; Subject to flooding
 Waterfall; Rapids
 Heavily vegetated shoreline or floodbank; Levee
 Tidal rocks or ledge; Offshore rock
 Navigation light or lighthouse; Exposed wreck
 Sand; Tidal reef
 Saline coastal flat; Tidal flats
 Jetty; Launching ramp

BOUNDARIES shown on this map are NOT authoritative. For full particulars please consult the Land Titles Office and Registry of Deeds or the Survey Division, Department of Environment and Planning. Areas within proclaimed towns or less than two hectares may not be depicted. Boundaries of Crown Land (including Reserves) extend to low water mark. To give a land parcel reference, prefix parcel number with municipal number. To use this number to gain title or survey information please contact Tasmania's Unique Parcel Identification Register. Property and parcel boundaries are shown as at January 1992.

Municipality name and number
 Municipality boundary
 Ward name
 Ward boundary
 Town boundary, Other administrative boundaries
 Reserve boundary, Vacuam or pining symbol
 Property boundary, Land parcel boundary and number
 Boundary location uncertain or indefinite



UNIVERSAL GRID REFERENCE

GRID ZONE DESIGNATION: 55G EP
 100 000 METRE SQUARE IDENTIFICATION: 124243
 To give a standard reference to the nearest 100 metres
 1. State name and number of this map.
 2. Locate the VERTICAL grid line to the left of the point and read large figures only in either the top or bottom margin e.g. 14
 Estimate tenths from grid line to point e.g. 2
 3. Locate the HORIZONTAL grid line below the point and read large figures only in either the left or right margin e.g. 43
 Estimate tenths from grid line to point e.g. 2
SAMPLE POINT: MONKS SUGARLOAF
 To give full grid reference, prefix with Grid Zone Designation and 100 000 metre Square Identification letters e.g. 55GEP14243

INDEX TO ADJOINING SHEETS

HERMITAGE 4832	TABLE 5032	VINCENY'S 5232
CLUNY 4831	DENNISTOUN 5031	DENNISTOUN 5031
CAWOOD 4830	BOTHWELL 5030	STONOR 5030