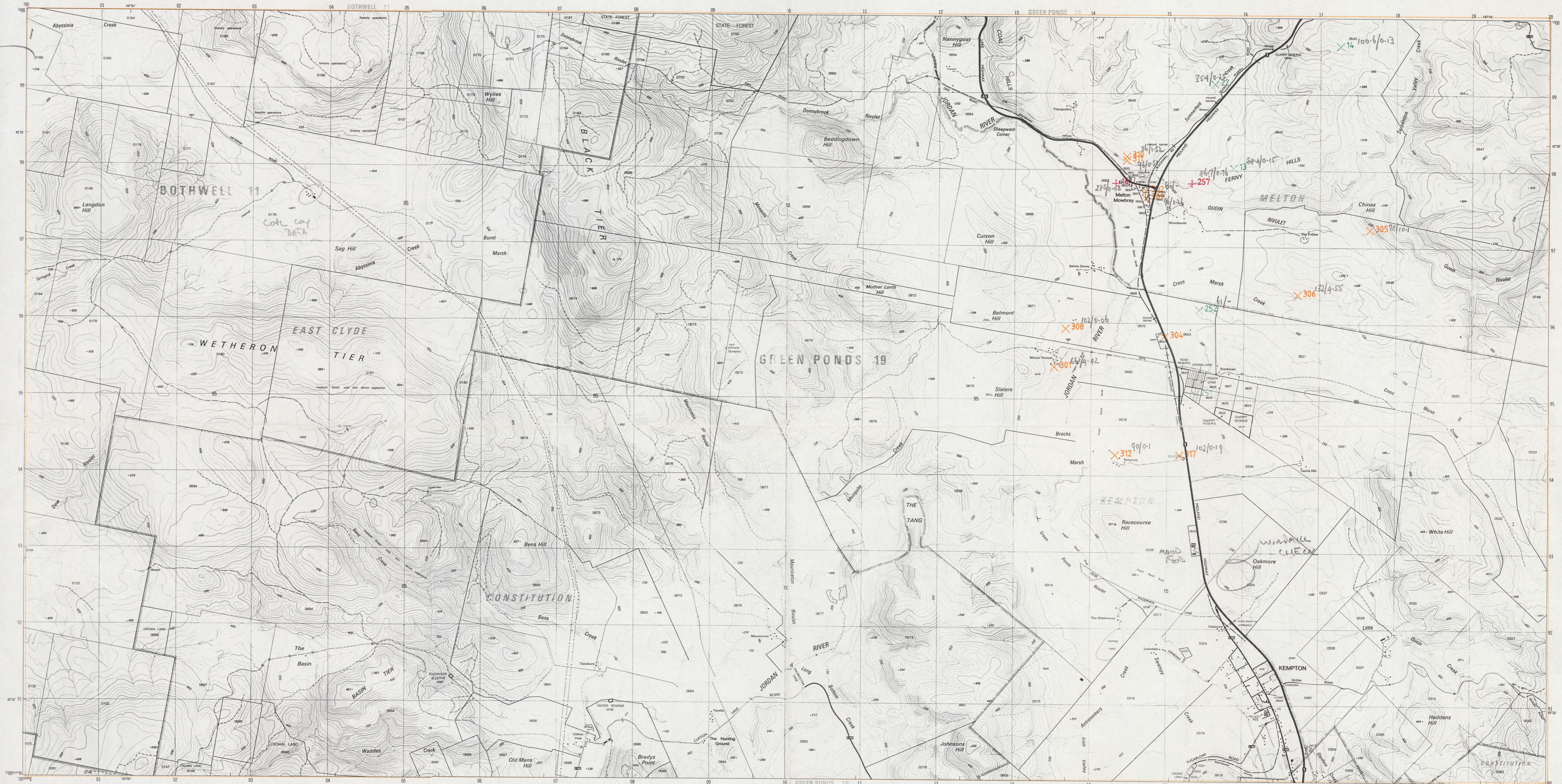


KEMPTON

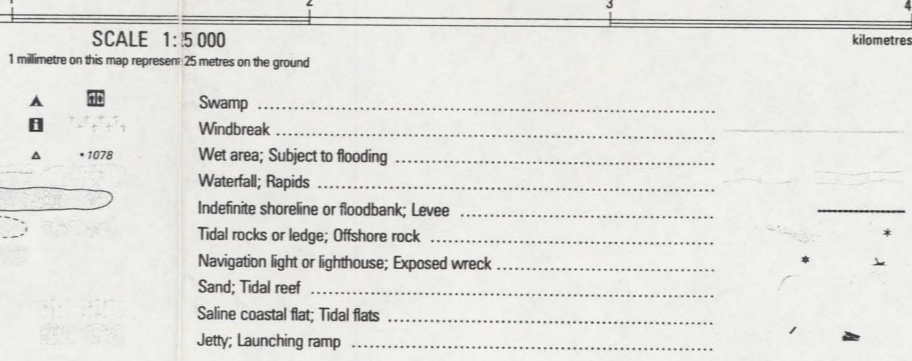


PRODUCTION: Mapping Division, Lands Department, Hobart, 1986.
 ACCURACY: Horizontal: 50% of well defined detail is within 12.5 metres of true position. Vertical: 30% of elevations are within 5 metres. These accuracies may not be achieved in areas of dense vegetation.
 RELIABILITY: Topography compiled from aerial photography flown 1982 with field verification 1985.
 NOMENCLATURE: Place names have been approved by the Nomenclature Board of Tasmania.
 PUBLIC RIGHT OF WAY: Roads on this map do not necessarily indicate a public right of way.
 REVISION: A five yearly revision cycle is intended for this series. Users noting errors and omissions are invited to write to the Director of Mapping, GPO Box 444, Hobart, Tasmania, 7001.
 © TASMANNIAN GOVERNMENT 1986

PROJECTION: Universal Transverse Mercator (UTM).
 HORIZONTAL DATUM: Australian Geodetic Datum 1986.
 VERTICAL DATUM: Australian Height Datum (Tasmania) excepting offshore islands whose datum is mean sea level.
 GRID: 1000 metre intervals of the Universal Transverse Mercator Grid Zone 55 (Australian Map Grid), Australian National Spheroid. Grid values are shown in full at the south west corner of the map.
 CONTOUR INTERVAL: 10 metres with 50 metre index contours.
 WORLD GEODETIC SYSTEM 1972: To convert co-ordinates from this system to Australian Geodetic Datum 1986, increase the value of latitudes by 5.3", equivalent to 192 metres, and decrease the value of longitudes by 4.4", equivalent to 192 metres. To obtain heights increase significantly by 1.1 metres.
 MAGNETIC VARIATION: True, Grid and Magnetic North are shown diagrammatically for the centre of this map. Magnetic North is correct for 1986 and moves easterly about 0.1" every two years.

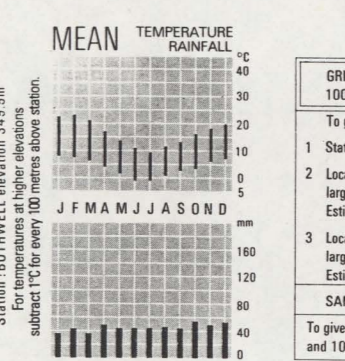
- | | | | | | | | | | | | |
|--|--------------------------------|----------------------------------|------------------------------|------------|-------------------------|---------------------------|---|--|---|---|---|
| Residential area, Commercial buildings | Primary road with route number | Secondary road with route number | Minor road with route number | Other road | Other roads with bridge | Vehicular track with gate | Walking track or horse trail (approximate position) with bridge | Railway with station, Places entered in National Estate Register | Power transmission line and pylon positions | Building, Feature of historic or special interest; Ruin, Mine | Post office; Police station; Fire station; School |
| | | | | | | | | | | | |

- | | | | | | | | | | |
|---|---|--|--|------------------------------|----------------------------------|-----------------------------|---|--------------------------|--------------------------------------|
| Caravan park; Camping ground; Public toilet | Disposal area; Information centre; Cemetery | Picnic area; Trip station beacon; Spot elevation | Contour with value; Depression contour | Quarry; pit or open cut mine | Rock scree; Broken rocky surface | Dense forest; Medium forest | Low dense vegetation; Distinctive grass | Orchard; Pine plantation | Eucalypt plantation; Submerged trees |
| | | | | | | | | | |



BOUNDARIES shown on this map are NOT authoritative. For full particulars please consult the Registrar-General's Division, Law Department, or the Survey Division, Lands Department. Areas within proclaimed towns or less than two hectares may not be depicted. Boundaries of Crown Land (including Reserved) extend to low water mark. To give a land parcel reference, prefix parcel number with municipal number. To use this number to gain title or survey information please consult the Mapping Division. Property and parcel boundaries are shown as at July 1985.

Municipality name and number
 Municipality boundary
 Ward name
 Ward boundary
 Town boundary; Other administrative boundaries
 Reserve boundary; Vinculum or joining symbol
 Property boundary; Land parcel boundary and number
 Boundary location uncertain or indefinite

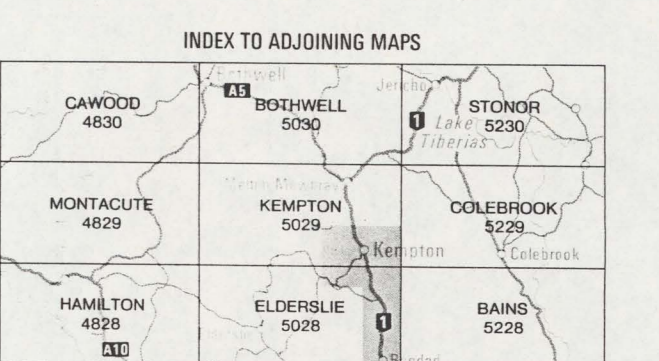


UNIVERSAL GRID REFERENCE

GRID ZONE DESIGNATION: 55G EN
 100 000 METRE SQUARE IDENTIFICATION: To give a standard reference to the nearest 100 metres

1. State name and number of this map.
2. Locate first VERTICAL grid line to the left of point and read large figure only in either the top or bottom margin e.g. 14. Estimate metres from grid line to point e.g. 3.
3. Locate first HORIZONTAL grid line below the point and read large figure only in either the left or right margin e.g. 95. Estimate metres from grid line to point e.g. 4.

SAMPLE POINT: Racecourse Hill 143534
 To give full grid reference, prefix with Grid Zone Designation and 100 000 metre Square Identification letters e.g. 55G EN 143534



More detailed TASMAMPS are available for areas shaded grey.