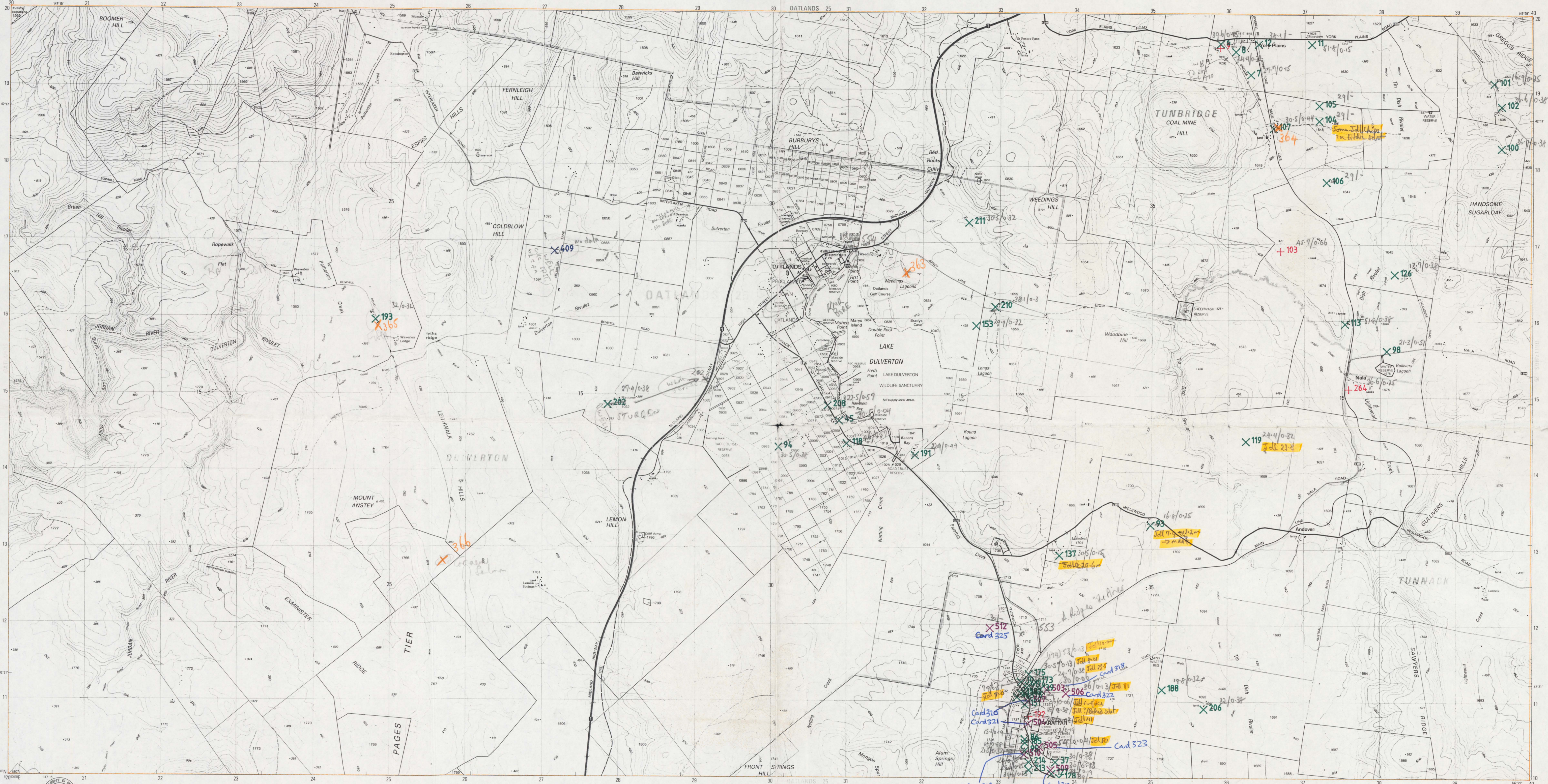


OATLANDS

PRIVATE GUY  
COAL DATA



**TASMAP** publication

PRODUCTION: Mapping Division, Department of Environment and Planning, Hobart, 1991  
 ACCURACY: Horizontal: Not less than 90% of points of well defined detail are within 12.5 metres of their true positions at map scale.  
 Vertical: Not less than 90% of elevations are within 5 metres of their true elevation. This accuracy may not be achieved in areas of dense vegetation.  
 RELIABILITY: The information content of this map has been determined from aerial photography information and verified by field inspection undertaken in April 1991. It contains as far as possible, information and verified by field inspection undertaken in April 1991. It contains as far as possible, information and verified by field inspection undertaken in April 1991.  
 REVISION: A five yearly revision cycle is intended for this series. Users noting errors and omissions are invited to write to the Director of Mapping, GPO Box 444, Hobart, Tasmania, 7001.  
 © TASMANIAN GOVERNMENT 1991

PROJECTION: Universal Transverse Mercator (UTM)  
 HORIZONTAL DATUM: Australian Geoidless Datum 1986  
 VERTICAL DATUM: Australian Height Datum (Tasmania) excluding offshore islands whose datum is mean sea level.  
 GRID: 1000 metre intervals of the Universal Transverse Mercator Grid, Zone 55 (Australian Map Grid), Australian National Spheroid. Grid values are shown in full at the south west corner of the map.  
 CONTOUR INTERVAL: 10 metres with 50 metre index contours.  
 WORLD GEODETIC SYSTEM 1972: To convert co-ordinates from this system to Australian Geoidless Datum 1986, increase the value of latitudes by 5.3" equivalent to 163 metres, and decrease the value of longitudes by 4.3" equivalent to 59 metres. To obtain heights increase sea level heights by 1 metre.  
 MAGNETIC VARIATION: True, Grid and Magnetic North are shown diagrammatically for the centre of the map. Magnetic North is correct for 1991 and moves easterly about 0.1" every two years.

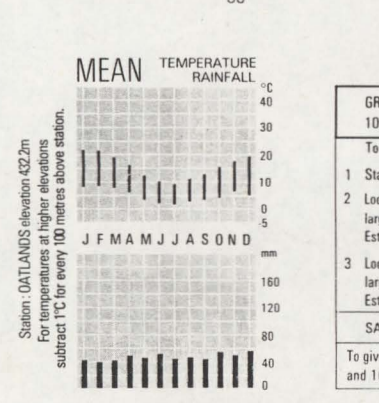
Residential area, Commercial buildings  
 Roads maintained for continuous public use  
 Minor road with route number  
 Other road  
 Other roads with bridge  
 Vehicular track with gate  
 Quarry, pit or open cut mine  
 Walking track, horse trail (apparent position) with bridge  
 Railway with station. Places shown in National Estate Register  
 Power transmission line with pylon positions  
 Building: Feature of historic or special interest; Ruin; Mine  
 Post office; Police station; Fire station; School

SCALE 1:25 000  
 1 millimetre on the map represents 25 metres on the ground

Swamp, perennial intermittent  
 Wadi/seasonal  
 Weir area, Subject to flooding  
 Waterfall; Rapids  
 Indefinite shoreline or floodbank, Levee  
 Tidal rocks or ledge; Offshore rock  
 Navigation light or light-house, Exposed wreck  
 Sand; Tidal reef  
 Saline; coastal flat; Tidal flats  
 Jetty; Launching ramp

BOUNDARIES shown on this map are NOT authoritative. For full particulars please consult the Land Titles Office and Registry of Deeds or the Survey Division, Department of Environment and Planning. Areas within proclaimed towns or less than two hectares may not be depicted. Boundaries of Crown Land (including Reserves) extend to low water mark. To give a land parcel reference, prefix parcel number with municipal number. To use this number to gain title or survey information please consult Tasmania's Unique Parcel Identification Register. Property and parcel boundaries are shown as at March 1991.

Municipality name and number  
 Municipality boundary  
 Ward name  
 Town boundary  
 Reserve boundary, Other administrative boundaries  
 Reserve boundary, Vicinal or pinning symbol  
 Property boundary, Land parcel boundary and number  
 Boundary location uncertain or indefinite



UNIVERSAL GRID REFERENCE

GRID ZONE DESIGNATION	100 000 METRE SQUARE IDENTIFICATION
55Q	2470
55R	2480
55S	2490
55T	2500
55U	2510
55V	2520
55W	2530
55X	2540
55Y	2550
55Z	2560

INDEX TO ADJOINING SHEETS

TABLE 5032	VINCENTS 5232	FADDENS 5432
DENNISTOWN 5031	OATLANDS 5231	LEMONT 5431
BOTHWELL 5030	STONOR 5230	WHITEFOORD 5430

Purple/Violet 'X's were bores drilled by Ric Donaldson  
 Card numbers written next to each one

✓ Jdl 8.01

175

? Jdl 12 7.3

✓ Jdl 7.0

✓ Jdl 23.5

~~10~~

~~173~~

Jdl 10.0m

27/0.25/Jdl 26m

✓ Jdl 31

No 152: 27/0.25/Jdl/Bahw ddt

No 157: 18/0.78/ = N-11

~~198~~

~~74~~

~~3~~

~~95~~

~~0~~

~~3~~

506

6

✓ Jdl 31

23/0.63/Jdl 22.0m

Jdl surface

~~163~~

~~56~~

~~7~~

~~50~~

~~7~~

~~151~~

~~1~~

✓ Jdl/Bahw ddt

+ 192

× 504 ✓ Jdl 41m

~~86~~  
~~85~~  
~~95~~  
~~540~~

86  
85  
95  
540

505 ✓ Jdl 50 m

× 214  
× 213

× 37

× 509  
× 127

128