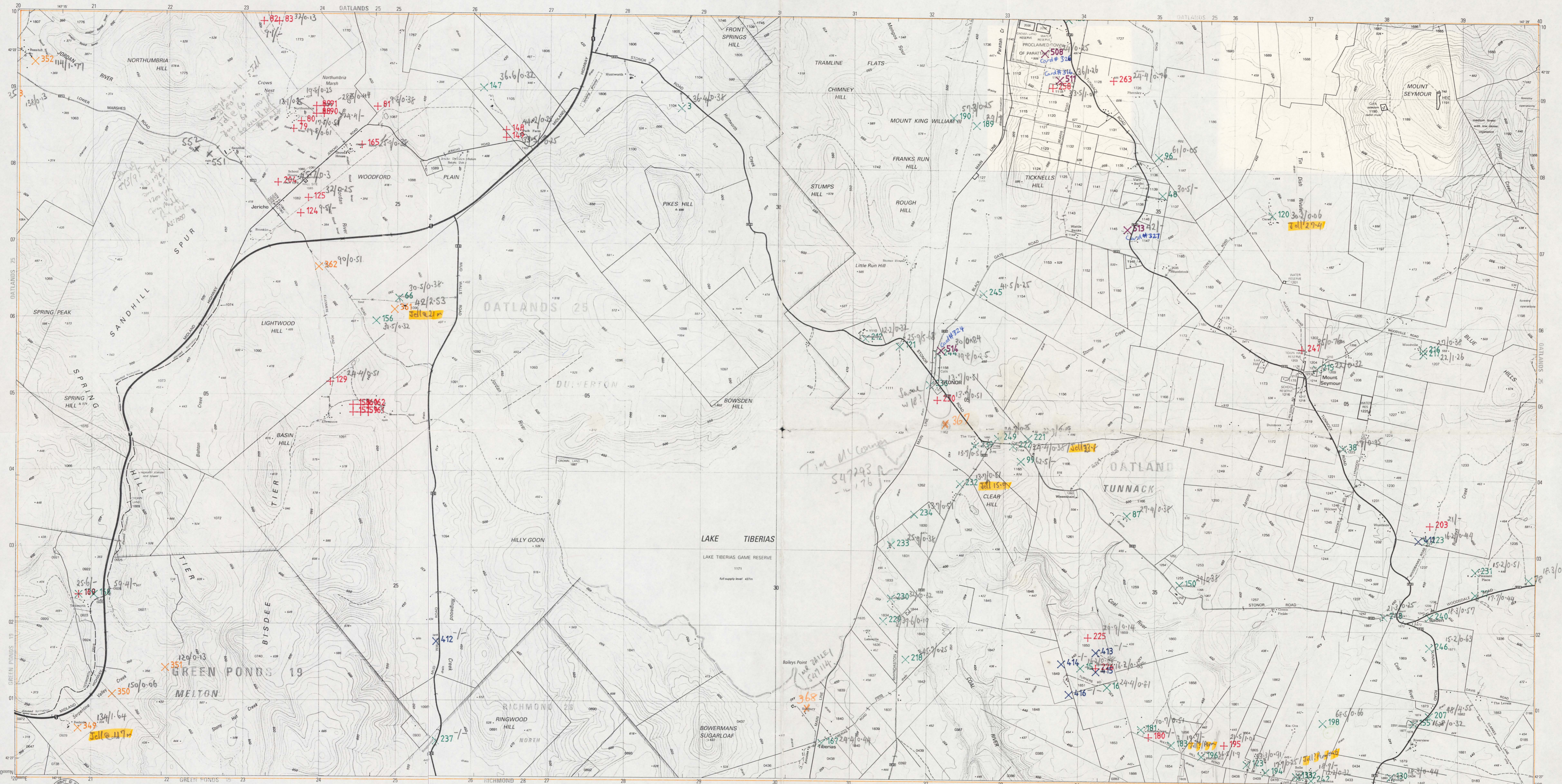


Purple/Violet 'x's are Ric Donaldsons Study Bores, they have Card numbers assigned to each of them in blue pen.



TASMAP publication

PRODUCTION: Mapping Division, Department of Environment and Planning, Hobart, 1992.

ACCURACY: Horizontal: Not less than 90% of points of well defined detail are within 125 metres of their true positions at map scale.

VERTICAL: Not less than 90% of elevations are within 5 metres of their true elevation. This accuracy may not be achieved in areas of dense vegetation.

RELIABILITY: The information content of this map has been determined from aerial photography taken in May 1988 and verified by field inspection undertaken in Feb 1990 to contain as far as possible, information appropriate to the scale, the geographical locality, and the general purpose of this map.

NOMINATING: Place names have been approved by the Nominations Board of Tasmania.

PUBLIC RIGHT OF WAY: Roads on this map do not necessarily indicate a public right of way.

REVISION: A five yearly revision cycle is intended for this series. Users noting errors and omissions are invited to write to the Director of Mapping, GPO Box 44A, Hobart, Tasmania, 7001.

© TASMANIAN GOVERNMENT 1992

PROJECTION: Universal Transverse Mercator (UTM).

HORIZONTAL DATUM: Australian Geodesic Datum 1986.

VERTICAL DATUM: Australian Height Datum (Tasmania) excepting offshore islands whose datum is mean sea level.

GRID: 1000 metre intervals of the Universal Transverse Mercator Grid, Zone 56 (Australian Map Grid, Australian National Spheroid). Grid values are shown in full at the south west corner of the map.

CONTOUR INTERVAL: 10 metres with 50 metre index contours.

WORLD GEODETIC SYSTEM 1972: To convert co-ordinates from this system to Australian Geodesic Datum 1986, increase the value of latitudes by 4.3", equivalent to 163 metres, and decrease the value of longitudes by 4.2", equivalent to 99 metres. To obtain heights increase suitable heights by 1 metre.

MAGNETIC VARIATION: True, Grid and Magnetic North are shown diagrammatically for the centre of this map. Magnetic North is correct for 1992 and moves easterly about 0.1" every two years.

Residential area, Commercial buildings

Roads maintained for continuous public use

Roads of restricted use or access

Walking track, horse trail (approximate position) with bridge

Railway with station; Places entered in National Estate Register

Power transmission line with pylon positions

Building; Feature of historic or special interest; Ruin; Mine

Post office; Police station; Fire station; School

Caravan park; Camping ground; Public toilets

Disposal area; Visitor information centre; Cemetery

Picnic area; Trig station beacon; Spot elevation

Contour with value; Depression contour

Quarry, pit or open cut mine

Rock scree; Broken rocky surface

Dense forest; Medium forest

Low dense vegetation; Distinctive grass

Orchard; Pine plantation

Eucalypt plantation; Submerged trees

Swamp, perennial, intermittent

Wetland

Wet area; Subject to flooding

Waterfall; Rapids

Headline shoreline or foreshore; Ledge

Tidal rocks or ledge; Offshore rock

Navigation light or lighthouse; Exposed wreck

Sand; Tidal reef

Saline coastal flat; Tidal flats

Jetty; Launching ramp

BOUNDARIES shown on this map are NOT authoritative. For full particulars please consult the Land Titles Office and Registry of Deeds or the Survey Division, Department of Environment and Planning. Areas within Reserves extend to low water mark. To give a land parcel reference, prefix parcel number with municipal number. To use this number to give title or survey information please consult 'Tasmania's Unique Parcel Identification Register. Property and parcel boundaries are shown as at August 1991.

Municipality name and number

Municipality boundary

Ward name and number

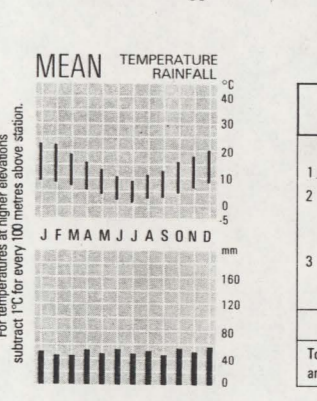
Ward boundary

Town boundary; Other administrative boundaries

Reserve boundary; Vestibule or pining symbol

Property boundary; Land parcel boundary and number

Boundary location uncertain or indefinite



UNIVERSAL GRID REFERENCE

GRID ZONE DESIGNATION: 56SQ

100 000 METRE SQUARE IDENTIFICATION

To give a standard reference to the nearest 100 metres

- State name and number of this map
- Locate the VERTICAL grid line to the left of point and read large figures only either the left or bottom margin e.g. 27
- Locate the HORIZONTAL grid line below the point and read large figures only either the left or right margin e.g. 04

Estimate tenths from grid line to point e.g. 27 04 32

Example: STONOR 56SQ 27 04 32

To give full grid reference, prefix with Grid Zone Designation and 100 000 metre Square Identification letters e.g. 56SQE270432

INDEX TO ADJOINING SHEETS

DENNISTOWN 5031	OATLANDS 5031	LEAMONT 5431
BOTHWELL 5030	STONOR 5230	WHITEFOORD 5430
KEEMPTON 5029	COLERBROOK 5029	WOODBARK 5429

1:5000 Orthophoto/Cadastral maps are available for any area shaded grey.