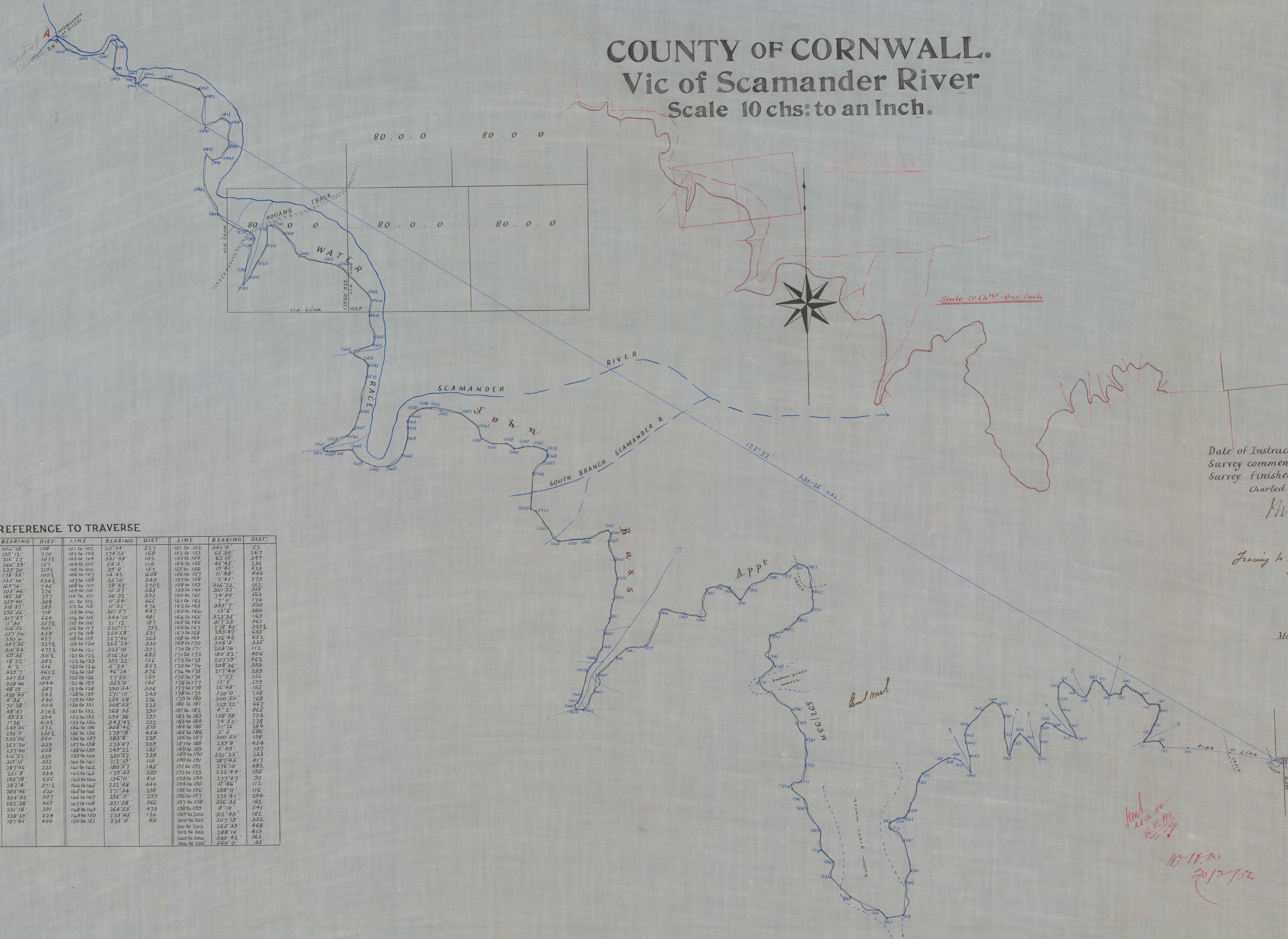


COUNTY OF CORNWALL.

Vic of Scamander River

Scale 10 chs: to an Inch.



Date of Instructions 9.3.01
 Survey commenced 29.5.01
 Survey finished 6.6.01
 Charted A.O

Thomas Clark
 District Surveyor

Tracing to Nelson
 3.8.1901



May be acted upon 9.8.01

151 P. Murphy
 4937/93 M. 40
 John Bass
 M.L.

4890/93 M. 17-1-78
 D. Delaney & J. O'Kelly
 M.L.
 130 M. E. Murphy

REFERENCE TO TRAVERSE

LINE	BEARING	DIST.	LINE	BEARING	DIST.	LINE	BEARING	DIST.	LINE	BEARING	DIST.
1 to 2	291°10'	248.1	51 to 52	204°28'	198	101 to 102	211°34'	527	151 to 152	342°0'	52
2 to 3	282°33'	1011	52 to 53	159°12'	770	102 to 103	214°33'	168	152 to 153	65°30'	267
3 to 4	277°57'	383	53 to 54	216°27'	167.5	103 to 104	341°38'	105	153 to 154	62°15'	347
4 to 5	272°48'	564	54 to 55	266°29'	54.3	104 to 105	54°3'	110	154 to 155	45°45'	236
5 to 6	325°48'	174.5	55 to 56	239°20'	219.5	105 to 106	29°0'	187	155 to 156	10°41'	42.3
6 to 7	267°55'	325	56 to 57	178°33'	100.5	106 to 107	14°42'	608	156 to 157	11°49'	84.6
7 to 8	36°40'	237	57 to 58	133°20'	434.5	107 to 108	35°10'	349	157 to 158	7°41'	279
8 to 9	277°17'	222.5	58 to 59	169°16'	74.6	108 to 109	28°38'	270.5	158 to 159	316°27'	152
9 to 10	24°18'	373	59 to 60	205°46'	276	109 to 110	10°37'	365	159 to 160	301°55'	365
10 to 11	348°45'	136	60 to 61	185°38'	297	110 to 111	20°32'	333	160 to 161	74°30'	463
11 to 12	263°4'	227.5	61 to 62	269°40'	364	111 to 112	11°34'	265	161 to 162	7°11'	174
12 to 13	327°23'	227.5	62 to 63	318°37'	283	112 to 113	11°31'	476	162 to 163	345°7'	330
13 to 14	304°48'	427.5	63 to 64	235°46'	718	113 to 114	357°27'	447	163 to 164	13°6'	389
14 to 15	213°0'	253	64 to 65	317°57'	664	114 to 115	344°10'	481	164 to 165	323°35'	163
15 to 16	265°12'	245	65 to 66	11°30'	367.5	115 to 116	21°12'	187	165 to 166	217°25'	261
16 to 17	326°30'	370	66 to 67	316°55'	401	116 to 117	320°17'	72	166 to 167	276°20'	303.5
17 to 18	251°5'	143	67 to 68	357°31'	458	117 to 118	250°58'	521	167 to 168	283°47'	645
18 to 19	207°54'	456	68 to 69	330°14'	627	118 to 119	267°40'	263	168 to 169	376°46'	652
19 to 20	304°50'	308.5	69 to 70	347°36'	227.5	119 to 120	265°24'	330	169 to 170	305°3'	335
20 to 21	312°35'	337.5	70 to 71	310°34'	472.5	120 to 121	323°10'	392	170 to 171	253°16'	112
21 to 22	217°23'	170	71 to 72	69°35'	319.5	121 to 122	8°36°36'	485	171 to 172	180°55'	406
22 to 23	181°45'	272.5	72 to 73	18°22'	382	122 to 123	282°22'	156	172 to 173	207°10'	462
23 to 24	167°11'	294.5	73 to 74	4°2'	616	123 to 124	5°24'	852	173 to 174	208°28'	383
24 to 25	156°40'	429	74 to 75	322°7'	462.5	124 to 125	16°24'	376	174 to 175	217°40'	259
25 to 26	150°0'	320	75 to 76	347°33'	319	125 to 126	27°50'	159	175 to 176	7°27'	356
26 to 27	293°42'	160.5	76 to 77	308°40'	1044	126 to 127	382°0'	104	176 to 177	13°5'	539
27 to 28	302°38'	418	77 to 78	48°19'	497	127 to 128	320°34'	306	177 to 178	26°48'	185
28 to 29	296°3'	224	78 to 79	320°55'	242	128 to 129	271°10'	249	178 to 179	320°6'	248
29 to 30	229°1'	126.5	79 to 80	4°38'	540	129 to 130	264°58'	226	179 to 180	300°50'	768
30 to 31	185°53'	377	80 to 81	70°28'	404	130 to 131	308°53'	223	180 to 181	329°22'	667
31 to 32	182°0'	322.5	81 to 82	48°51'	374.5	131 to 132	269°35'	290	181 to 182	2°2'	865
32 to 33	323°30'	467	82 to 83	59°52'	394	132 to 133	294°36'	220	182 to 183	136°38'	234
33 to 34	302°15'	240	83 to 84	1°26'	413.5	133 to 134	343°42'	222	183 to 184	74°52'	228
34 to 35	217°14'	201	84 to 85	349°36'	572	134 to 135	308°46'	370	184 to 185	3°26'	284
35 to 36	200°24'	367	85 to 86	235°7'	253.5	135 to 136	375°18'	454	185 to 186	3°5'	526
36 to 37	347°0'	447.5	86 to 87	233°36'	360	136 to 137	283°8'	229	186 to 187	300°20'	198
37 to 38	0°10'	482.5	87 to 88	267°20'	329	137 to 138	273°47'	209	187 to 188	239°18'	454
38 to 39	343°3'	314.5	88 to 89	257°40'	608	138 to 139	249°22'	135	188 to 189	0°45'	737
39 to 40	288°6'	175.5	89 to 90	216°52'	329	139 to 140	230°52'	238	189 to 190	370°23'	233
40 to 41	232°28'	227	90 to 91	319°15'	332	140 to 141	212°15'	113	190 to 191	287°45'	817
41 to 42	223°16'	431	91 to 92	287°44'	223	141 to 142	180°57'	145	191 to 192	276°10'	482
42 to 43	203°10'	235	92 to 93	221°8'	334	142 to 143	179°53'	230	192 to 193	222°44'	195
43 to 44	173°14'	184	93 to 94	193°18'	626	143 to 144	156°11'	410	193 to 194	277°47'	300
44 to 45	166°21'	340	94 to 95	282°4'	371.5	144 to 145	338°48'	444	194 to 195	0°46'	112
45 to 46	178°16'	378	95 to 96	283°46'	520	145 to 146	271°34'	228	195 to 196	288°11'	116
46 to 47	313°53'	376	96 to 97	204°32'	337	146 to 147	225°11'	229	196 to 197	275°41'	234
47 to 48	232°11'	122	97 to 98	352°38'	463	147 to 148	321°58'	366	197 to 198	326°35'	182
48 to 49	270°51'	144	98 to 99	231°18'	291	148 to 149	264°55'	473	198 to 199	8°10'	541
49 to 50	249°10'	168	99 to 100	228°29'	624	149 to 150	273°45'	120	199 to 200	312°49'	182
50 to 51	239°20'	347	100 to 101	187°44'	400	150 to 151	273°10'	83	200 to 201	267°19'	352
									201 to 202	265°39'	468
									202 to 203	288°10'	413
									203 to 204	320°42'	363
									204 to 205	360°0'	45

SP
 02/20

45

JOHN BYRNE

Handwritten notes:
 Hnd
 10-11-01
 25/2/02

