

M<sup>T</sup> READ

# HERCULES <sup>Gold & Silver</sup> M<sup>NS</sup> CO N L

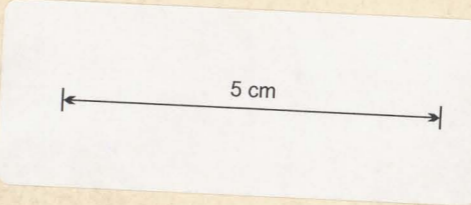
## COUNTY OF MONTAGU VICINITY OF M<sup>T</sup> READ

Tramway to connect mine with Deep Lead Station

Tracing to Plan  
9.8.1897

Entered on General Plan 1897

Scale 3 chains to an inch



**DUPLICATE.**

May be acted upon 18.9.97

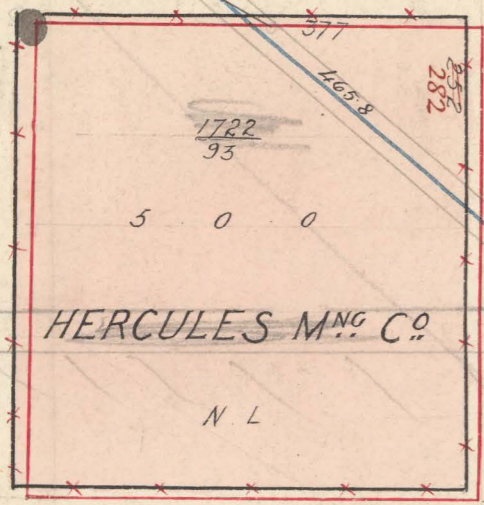
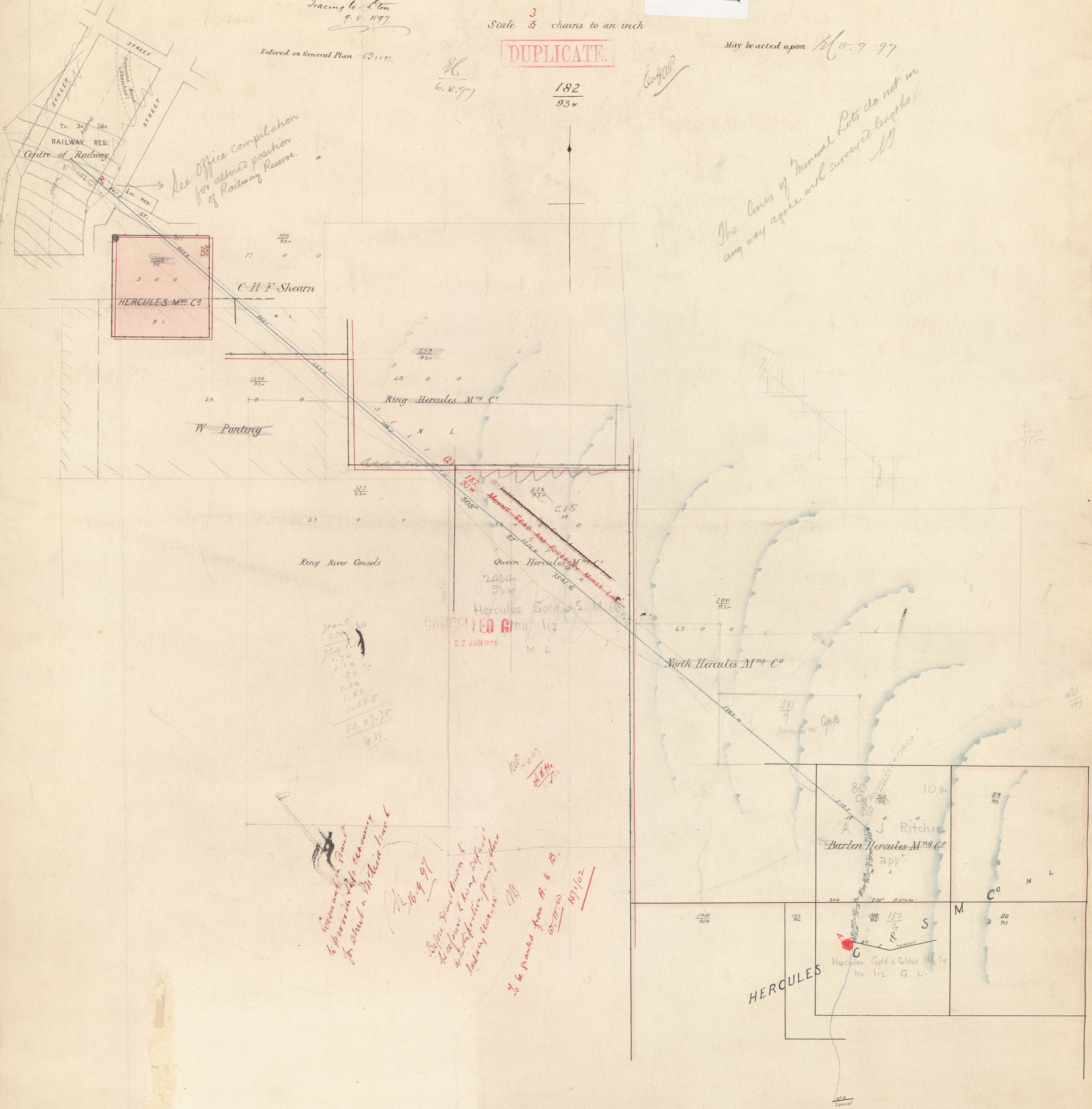
86  
6.8.97

182  
93<sup>W</sup>

*C. H. F.*

See Office Compilation  
for altered position  
of Railway Reserve.

The lines of Mineral Lots do not in  
any way agree with surveyed lengths



C. H. F. Shearn

HERCULES M<sup>NS</sup> CO

W. Porting

Ring Hercules M<sup>NS</sup> C<sup>O</sup>

Ring River Consols

Queen Hercules M<sup>NS</sup> C<sup>O</sup>

Hercules Gold & Silver M<sup>NS</sup> C<sup>O</sup>

North Hercules M<sup>NS</sup> C<sup>O</sup>

J. Ritchie

Barren Hercules M<sup>NS</sup> C<sup>O</sup>

Hercules Gold & Silver M<sup>NS</sup> C<sup>O</sup>  
No 112 G. L.

*See Office Compilation for altered position of Railway Reserve.*

*18.9.97*

*Before Grant made to King James & Henry, Defend to be in position from 9.8.97*

*30 be Proved from A. to B. 18.9.97*

*1871/02*

REGISTERED  
22 JUN 1897



H. F. Miles  
Surveyor  
M<sup>T</sup> Read  
July '97

SP  
53/62

53. [REDACTED]

182. HERCULES G.&S.CO.  
93.W.

53

53

53