

MINERAL

PLAN

OF

SURVEY OF WATERRIGHT  
PARISH OF CASTLE CAREY  
COUNTY CORNWALL

E. GAUNT APPLICANT 323/93W

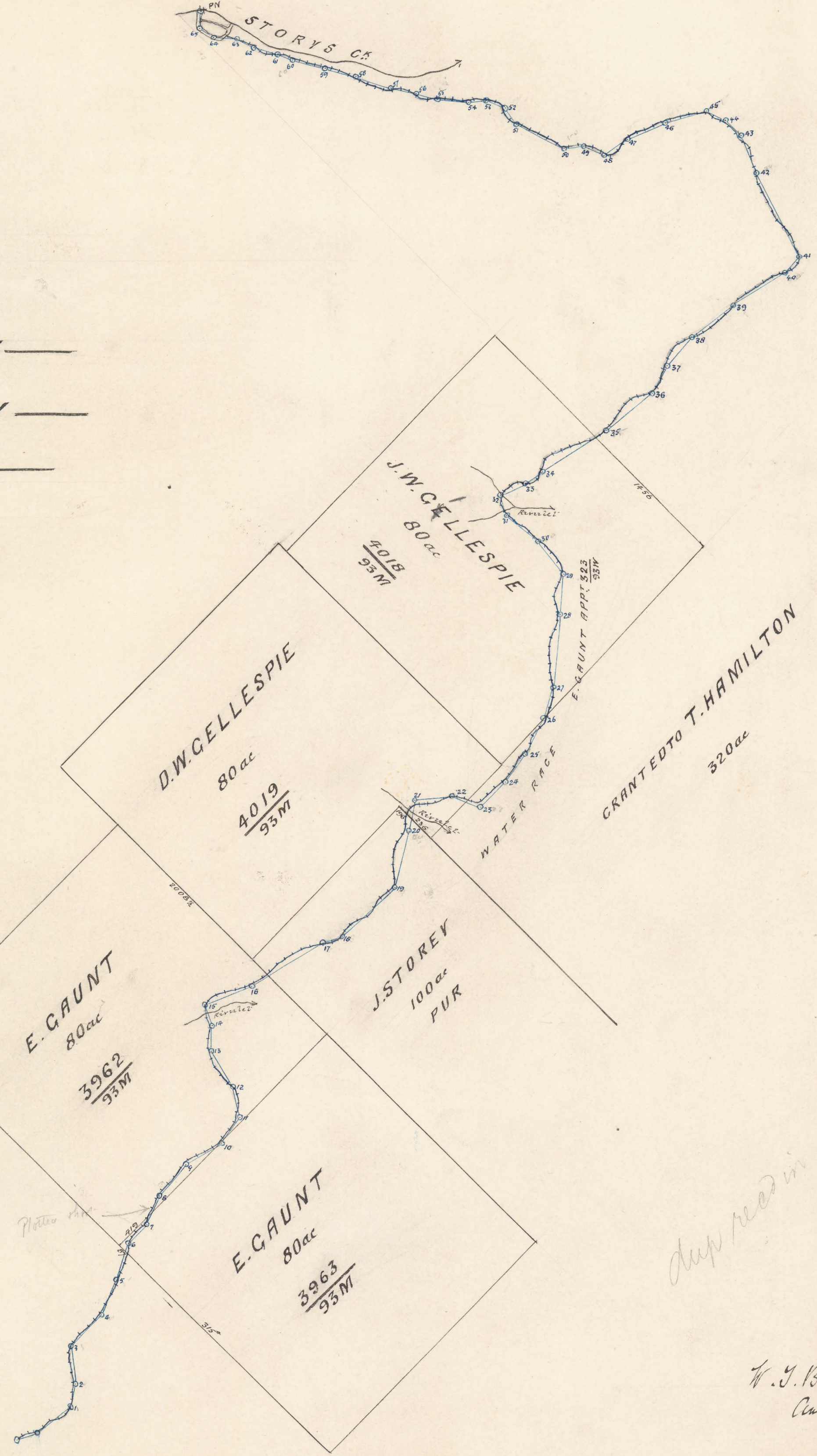
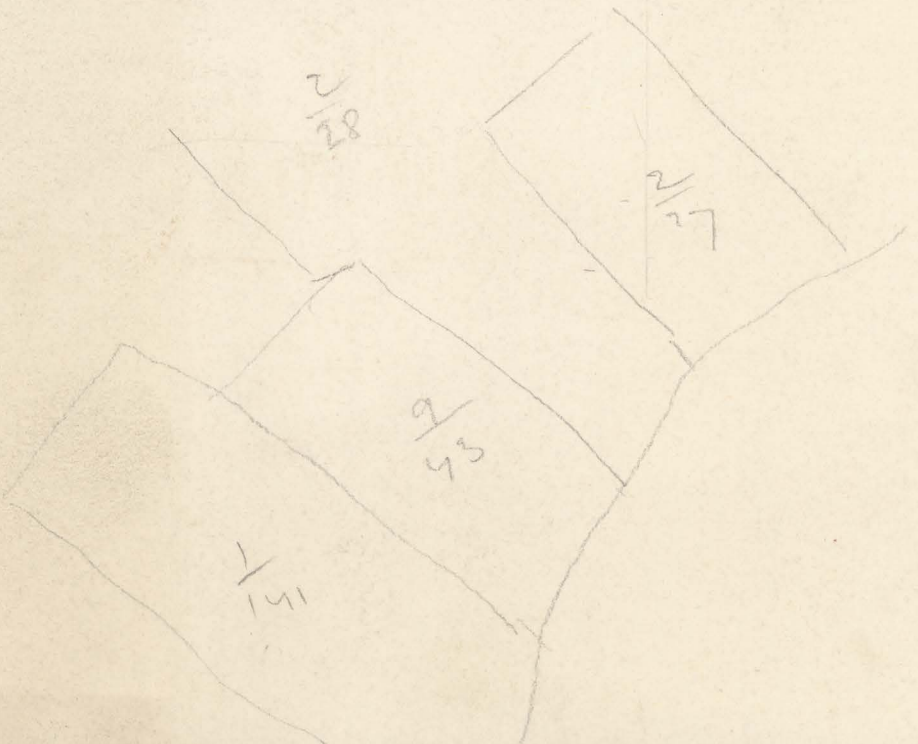
Now the South Esk Mining Co. No. 12:



Received  
Revised  
27.9.99

Plotted by C.P.  
Finally examined by C.P. 3.2.1900  
Entered on General Plan by C.P. 28.9.99  
Duplicate finally forl to Mines Dept 3.2.1900

SCALE 8 CHAINS TO 1 INCH



dup recd in Mines office  
27/9/99 was

W. J. Bunowle  
Authorised Surveyor  
21<sup>st</sup> Aug<sup>r</sup> 1899

SP  
77/01

323  
93 W

ORIGINAL

PLAN  
77

323-93 W