



# DIAGRAM FROM ACTUAL SURVEY

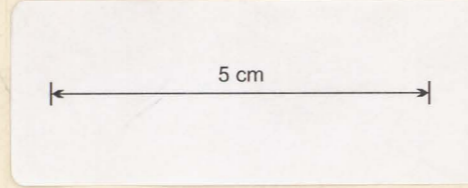
COUNTY OF CORNWALL

PARISHES OF EASTWOOD, COSHEN, LUNTA

Vicinity of Georges Bay

Scale Eight chains to an inch

N<sup>o</sup> OF APPLICATIONS 286 179 & 191 Amalgamated for St Helens T.M.C. Co  
87W 87W 87W Transf'd to Henry Turner

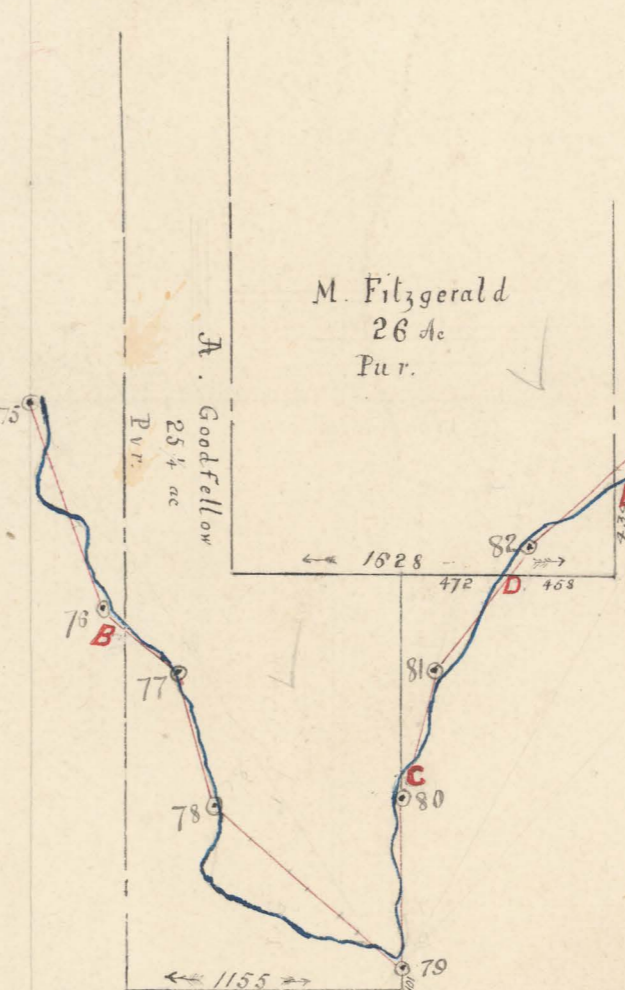


179 & 191 incorporated in 286  
87W 87W 87W  
Transf'd to  
THE ST HELENS (TASMANIA) TIN MINING CO. REG.

*Do the actual work  
as per plan and  
No. 286, 179  
87W  
18/5/90  
J.M.S.*

*Correct many  
errors with us and  
shorten plan at 2-  
1/2 p. Draftman  
18/5/90  
J.M.S.*

106 3 38  
C. Macneil  
Per  
12/8  
G. TERRY  
Per 198 Ac



*Tracing to Laminam  
19/6/90  
Plates 21R  
Plotted by P.H.L.*

*W. Simmons  
Surveyor  
11th June 1890*

85.

ST. HELENS. T. T. M. COS. W. R.

*short*

*[Faint red stamp]*