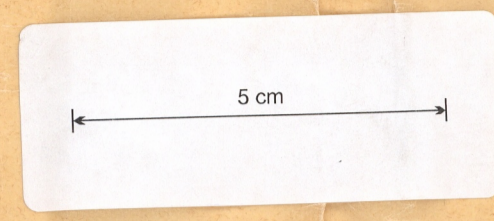


R. Provis
287
91M

Condit & Knight
422
91M

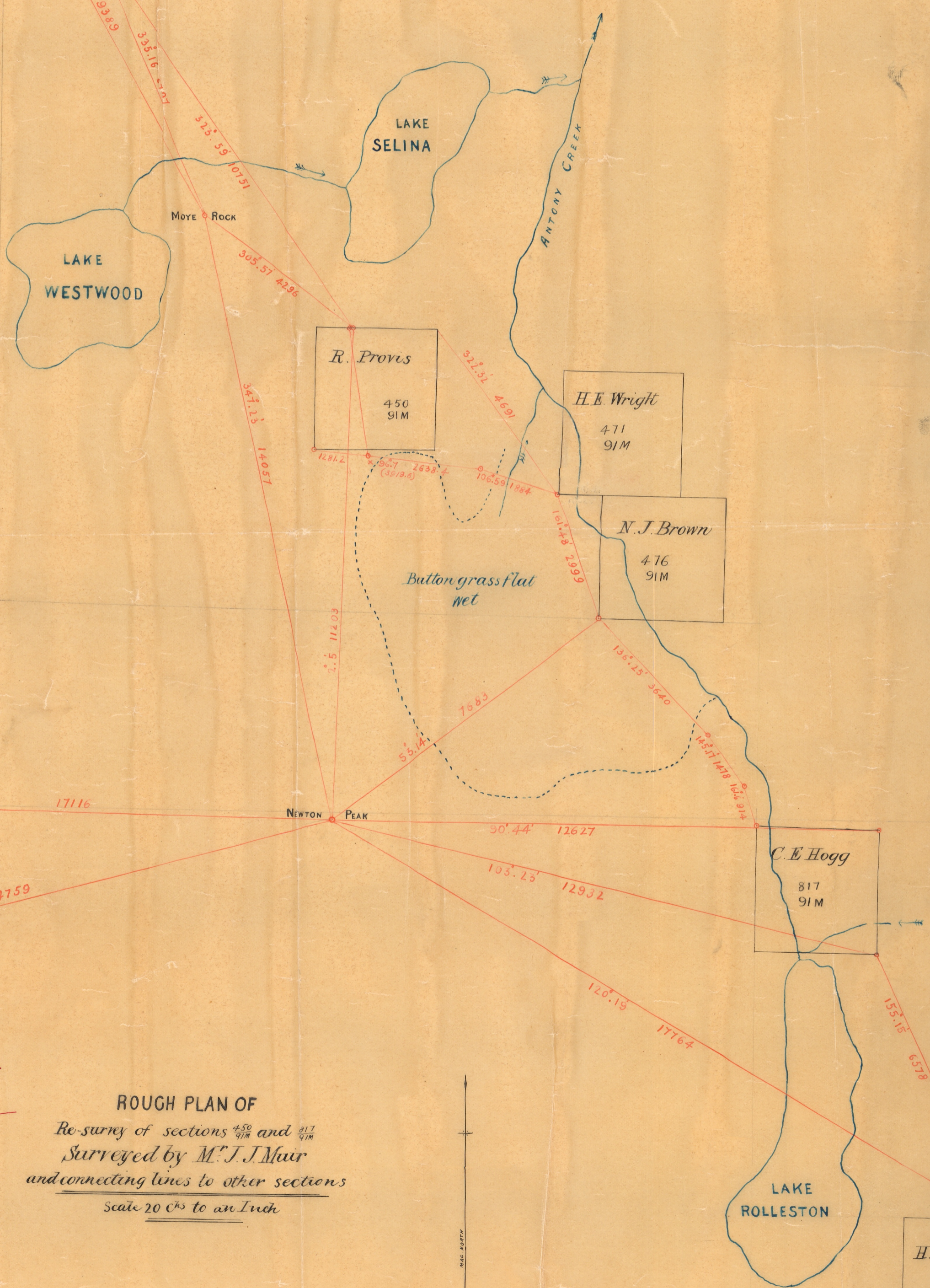


Survey Office,
12th July 1892.

SIR,
In reply to your Letter of _____
I herewith forward to you tracing showing
connection lines to lots in the
vicinity of lake Rolleston surveyed
by Mr. J. J. Muir.

I have the honor to be,
Sir,
Your obedient Servant,
S. Almond
Deputy Surveyor-General.

The Secty for Mines



ROUGH PLAN OF
Re-survey of sections ⁴⁵⁰/_{91M} and ⁴⁷¹/_{91M}
surveyed by M. J. J. Muir
and connecting lines to other sections
Scale 20^{ths} to an Inch

100. LAKES. W.L. LINDAFT CONNECTION
 0019M
 notallof
 0019M
 100

H.E. Wright
473
91M

J. Andrew
464
91M

S.P.
100
-01

und
11/7/92