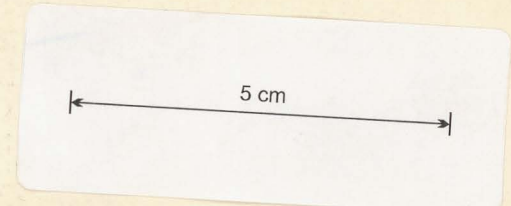
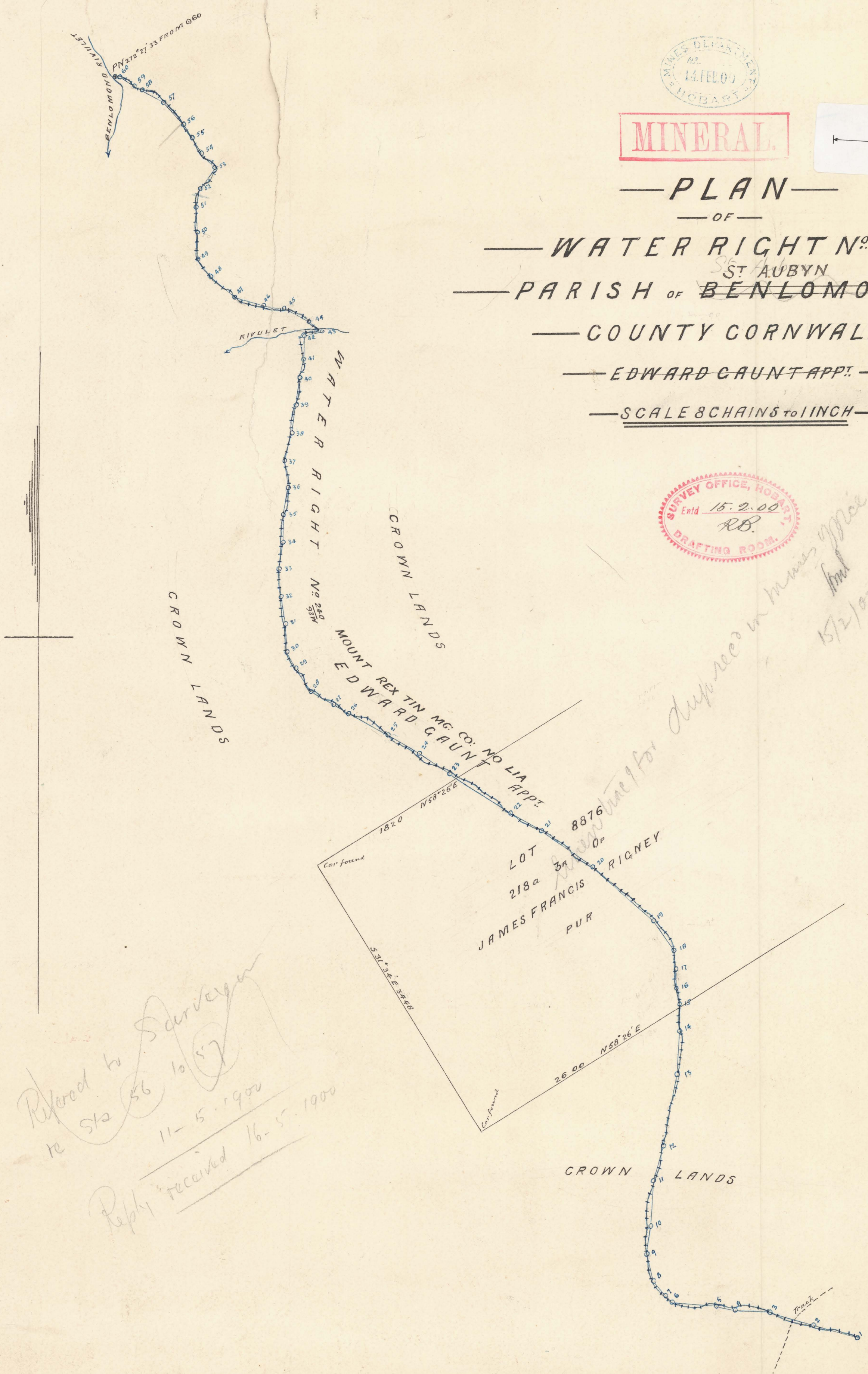




MINERAL.



PLAN
 OF
WATER RIGHT N^o 240
 ST AUBYN
PARISH OF BENLOMOND
 COUNTY CORNWALL
 EDWARD GAUNT APPT.
 SCALE 8 CHAINS TO 1 INCH



TRAVERSE

N ^o	B ^e	DIS ^t	N ^o	B ^e	DIS ^t	N ^o	B ^e	DIS ^t
1	285°18'	499	21	306°21'	399	41	2°1'	259
2	283°32'	492	22	302°57'	795	42	77°0'	193
3	271°52'	391	23	304°2'	398	43	306°13'	183
4	282°38'	303	24	300°21'	398	44	293°38'	312
5	275°7'	497	25	299°1'	490	45	278°75'	220
6	310°53'	100	26	300°53'	199	46	286°2'	321
7	321°56'	198	27	299°1'	297	47	309°43'	345
8	343°32'	297	28	324°4'	299	48	320°33'	241
9	82°0'	307	29	330°12'	199	49	0°24'	291
10	326'	486	30	356°45'	299	50	356°17'	270
11	15°57'	397	31	351°9'	297	51	10°28'	199
12	11°7'	798	32	366°14'	300	52	36°34'	296
13	4°52'	490	33	8°18'	298	53	316°12'	206
14	338°4'	293	34	1°41'	295	54	326°25'	195
15	347°45'	197	35	11°27'	297	55	323°37'	172
16	357°37'	199	36	353°20'	295	56	317°10'	331
17	354°20'	199	37	15°	298	57	294°41'	270
18	325°29'	395	38	7°12'	307	58	304°20'	100
19	310°38'	494	39	9°12'	293	59	301°	194
20	305°12'	700	40	11°13'	197	60	272°27'	33

Wm. J. Burrows
 Authorised Surveyor
 12th Jan'y 1900

Referred to Surveyor
 re 512 56 10 57
 11-5-1900
 Reply received 16-5-1900

Plotted by *mm* 11.5.00
 Finally examined by *CP* 23.5.1900
 Entered on General Plan by *CP* 24.2.1900
 Duplicate finally forl. to Mines Dept 25.5.1900

for deposit in mines office
15/2/00

118. GIPPS CK. T.M.CO.

(Ben Lomond)

W R 240
93 W

(Ben Lomond)

W R 240
93 W