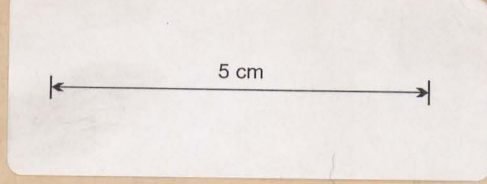


135

OFFICE
1839
ROBERT

MINES OFFICE
8 FEB 89
LAUNCESTON

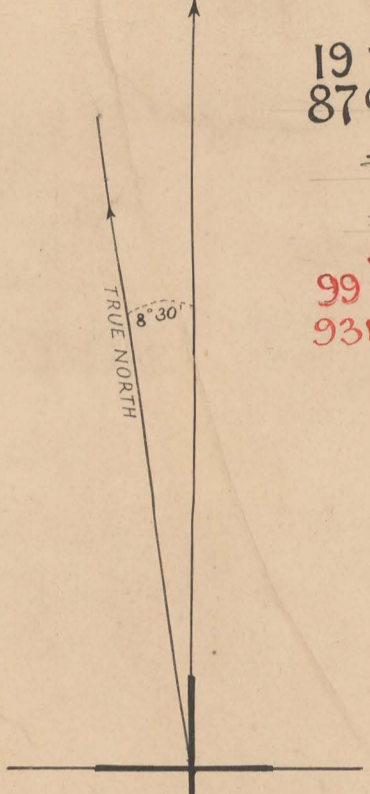
COUNTY OF DEVON
PARISH OF PHILIPS NORTON
SCALE TWENTY CHS. TO AN INCH



Recd 24 7 89
Mines Office

C. S. McGLEW
app^d to 19th
of 87th

19 W
87 G C. S. MCGLEW transf^d to
THE CHROMATE AND ASBESTOS PAINT
AND GOLD MINING CO. LIM.
99 W
93 W C. N. & SHEARN

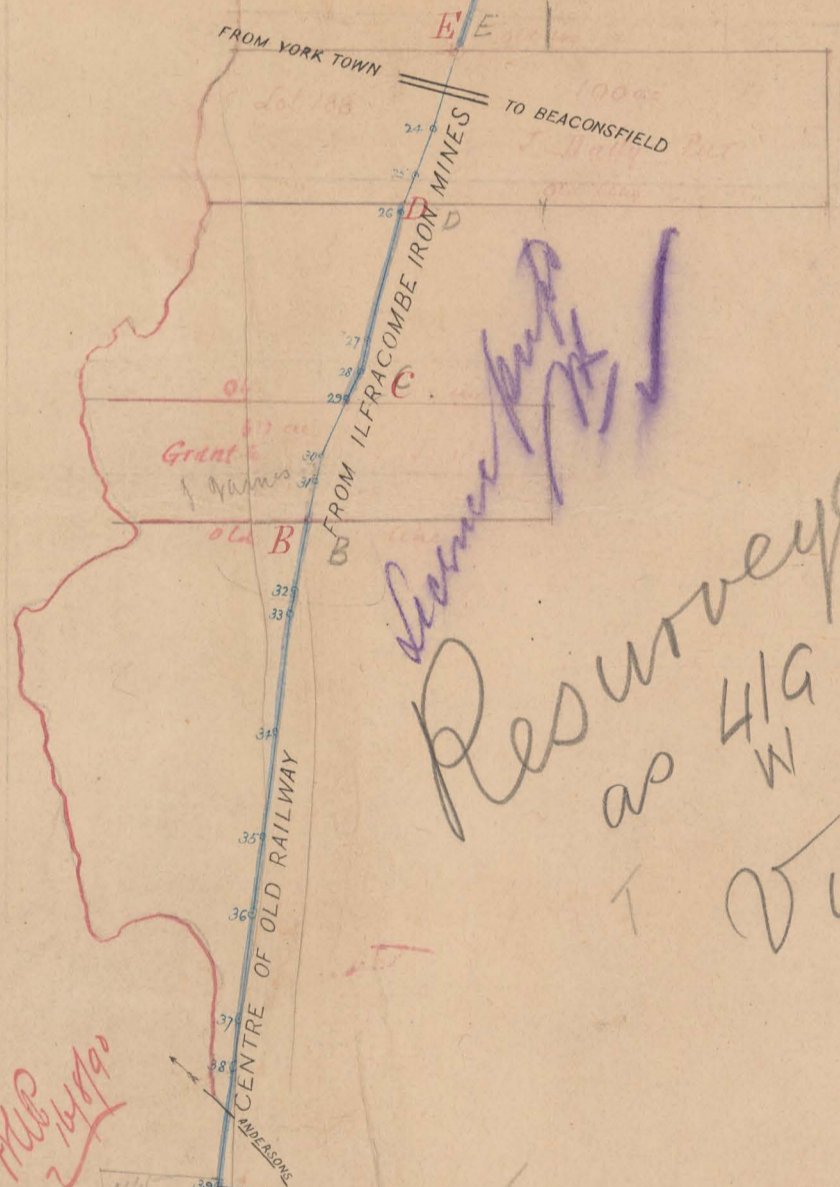


as to 193.
M 21.1.96

To be resurveyed
vide application 508
93W
O.P. 10-3-03

F.N.

32			
32			
57-05W			
1098			
57-45W			
870			
57-41W			
1025			
57-25W			
1200			
56-55W			
279			
57-15W			
1101			
57-21W			
260			
57-03W			
607			
523-01W			
346			
57-01W			
386			
57-50W			
1350			
57-05W			
414			
523-41W			
486			
57-47W			
343			
3014			
57-51W			
575			
57-14W			
207			
50-23E			
57			
50-28E			
278			
57-21E			
37			
54-05W			
392			
57-25W			
495			
52-17W			
1512			
57-61W			
241			
545-01W			
484			
57-52W			
255			
563-38W			
853			
57-16W			
249			
57-04W			
276			
500-02W			
510			
507-42W			
517			
57-17W			
509			
500-30W			
500			
507-05W			
500			
506-57W			
1002			
506-34W			
1109			
506-10W			
12			
506-01W			
4400			
1150			
960			
690			
135-22			
44			
65			
274-50			
500			



Resurveyed by G. M. Archer
as 419 W Co
vide 18/15

To be returned to lands
officially held as app^d
M 22.5.89
4.8.90
M.P. 1/1/90

Note. Local magnetic
south of Anderson
Five meridians shown -
Charted by J.B. O.P.
Plotted by O.P.

J. Perry Snell
Mining Surveyor
Feb 5th 1889

4/6/90
14/2/1890
4/6/90
17.8.89

S-P
135-01

TRAMWAY
WATER RIGHT No 19W
87C

Chromate & Asbestos Paint
& Gold Mining Co. Lim.

No 135

135. 99. C.H.F. SHEARN.
93.W.

PLAN OF
MINERAL SECTIONS
COUNTY OF DORSET