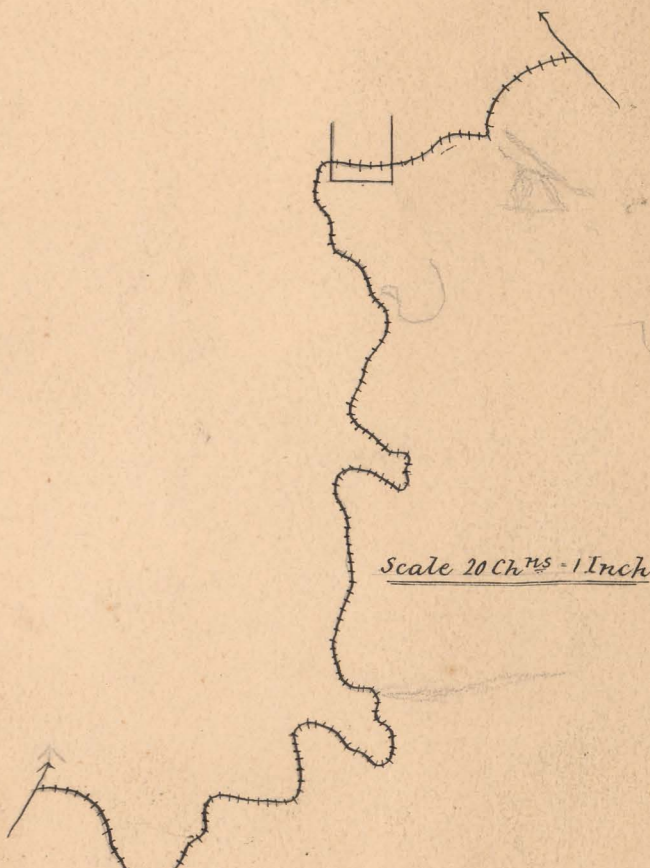
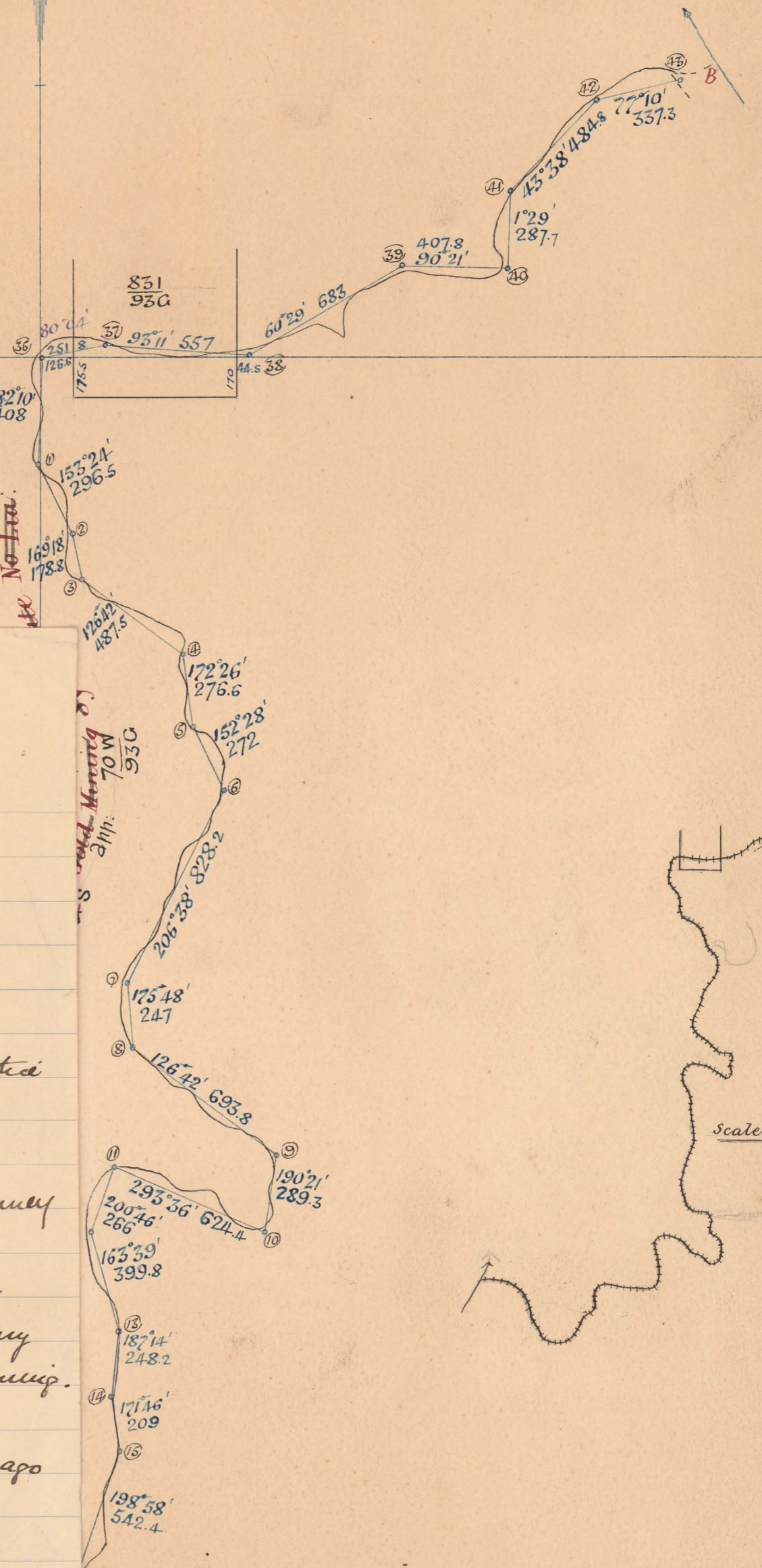
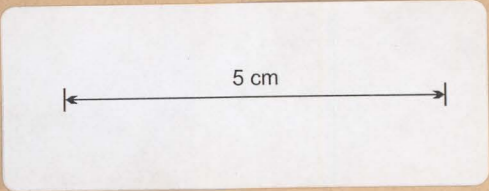


MINES DEPARTMENT
 Recd
 25 JAN 00
 HOBART



Length A to B 167ch: 30lks

09

MINES DEPARTMENT
 25 JAN 00
 HOBART

MINES DEPARTMENT
 25 JAN 00
 HOBART

Report

Denison Gold Field

70W 10 Titmus apt for water Right.
 93C

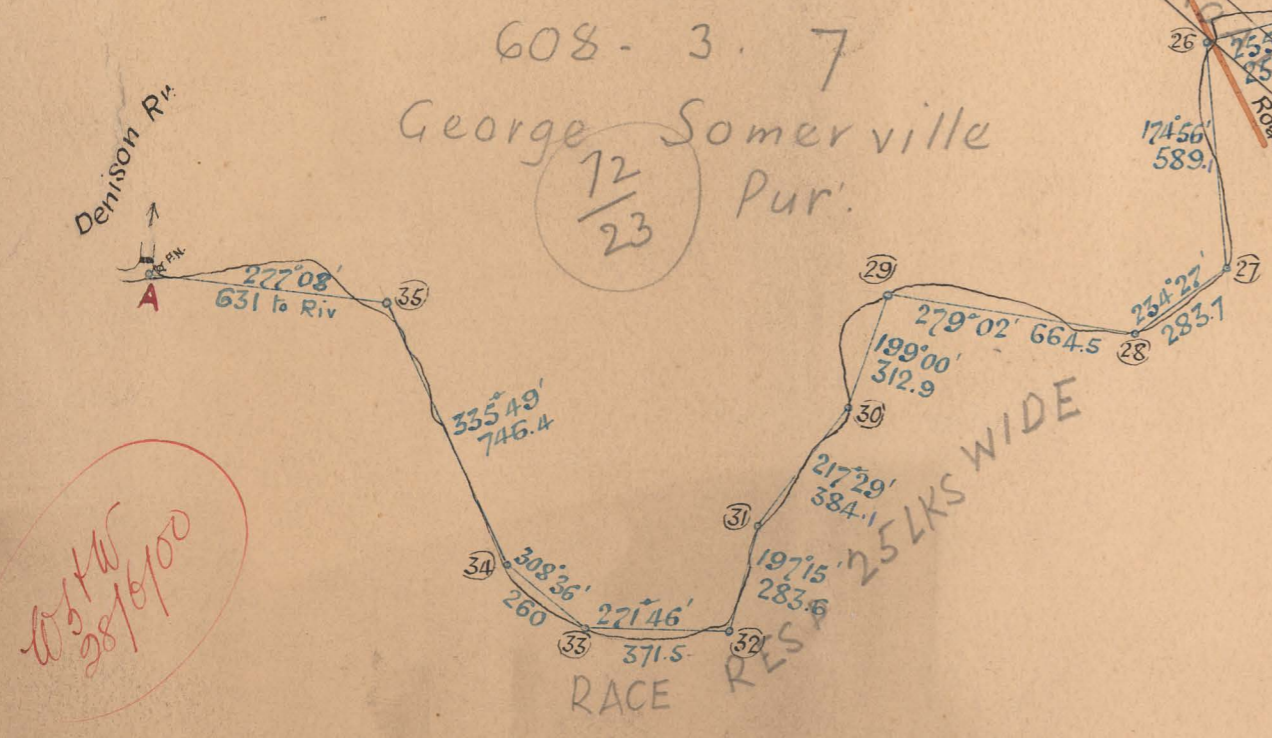
Regulations have been complied with and noted posted

The Race passes through see 831 use J. J. a. Runney
 93C

The Race crosses the Public Road from Golconda Railway Station. It does not encroach on any other water Right or work connected with mining.

The Race has been cut a number of years ago

G. S. Eddie
 District Surveyor
 19th Jan 1900



608-3-7
 George Somerville Pur.
 12/23

25 LKS WIDE
 RACE
 RES

631 W
 2816/100

Tracing to Town
 27-1-1900

May be acted upon 25. 5. 1900

S. P.
 148-01

MINES DEPARTMENT
 Recd
 25 JAN 00
 HOBART

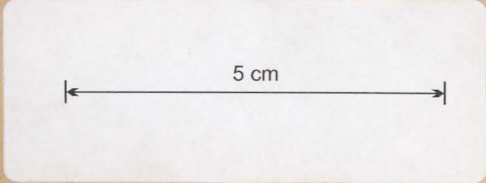


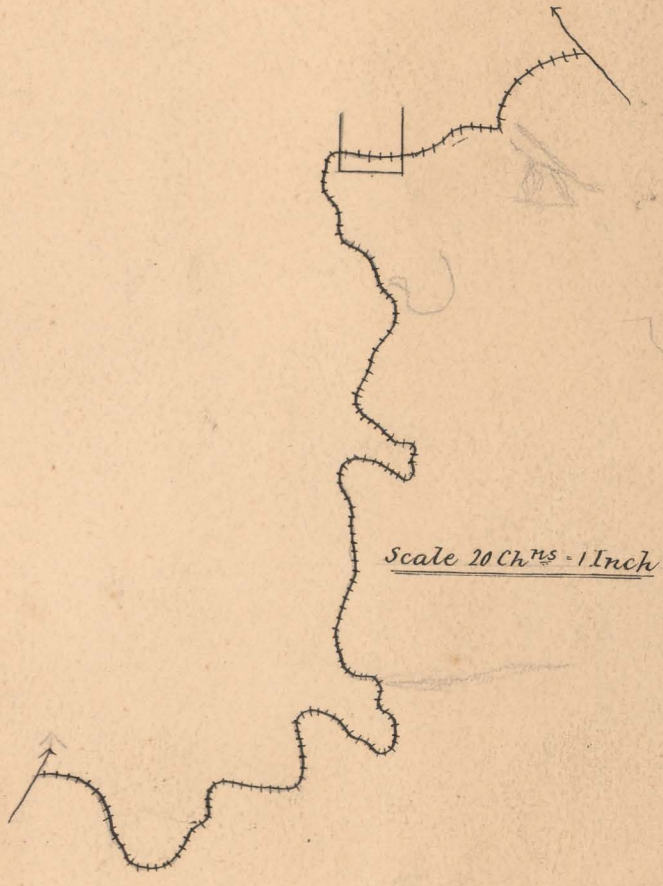
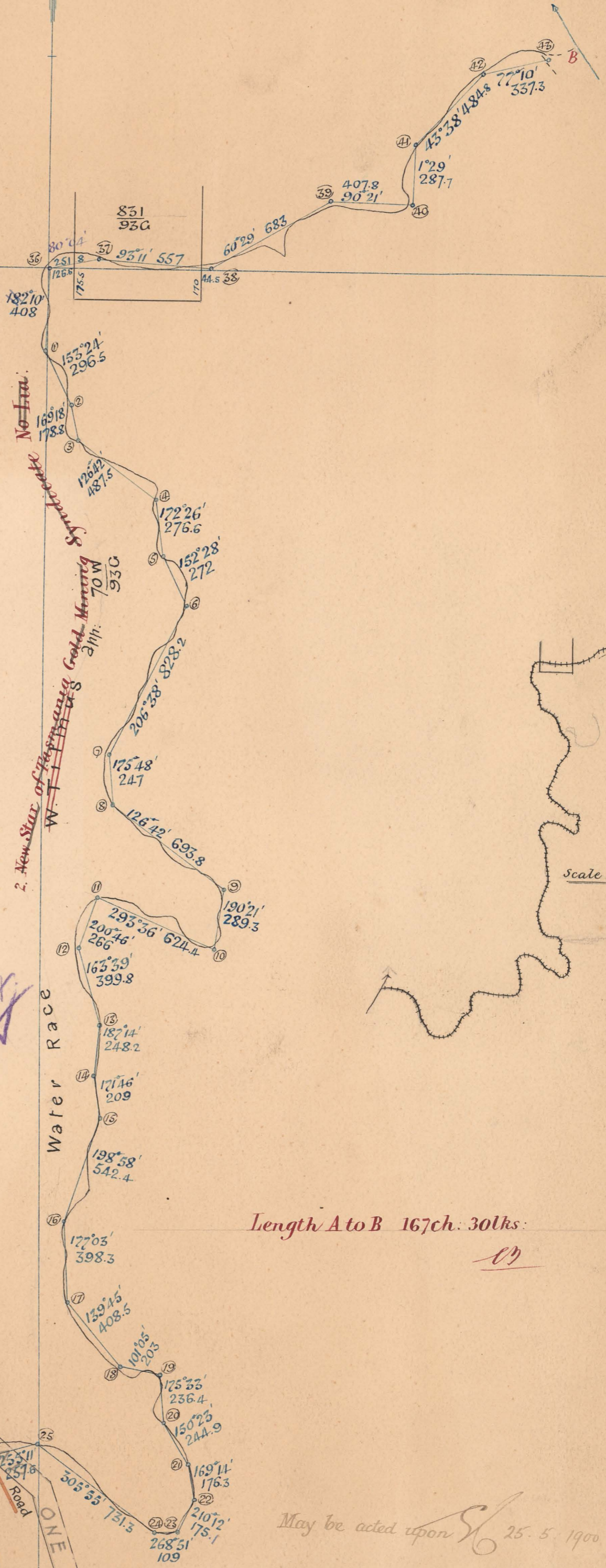
Diagram from Actual Survey
 County of Dorset
 Denison Gold Field
 Parish of Hurst
 Scale 5 Chains to an inch

Survey com 18.12.99
 fin 22.12.99

Charted A.M.O 23-2-1900
 Geo. Eadie
 District Surveyor
 19th Jan 1900

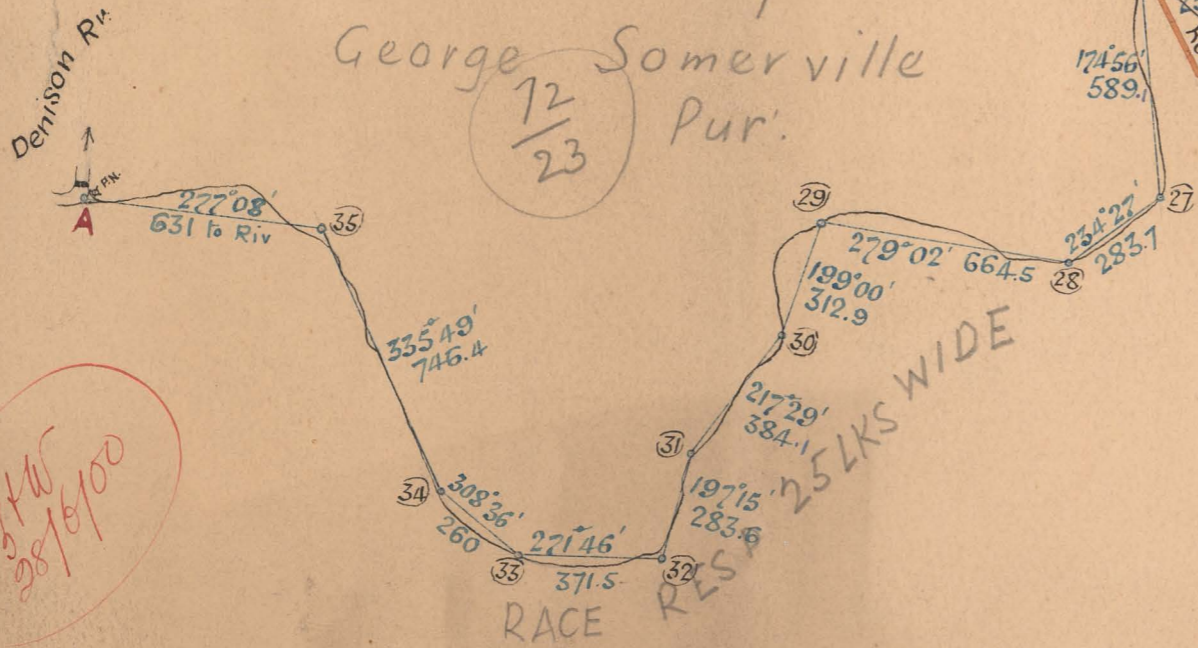
DUPLICATE.

Handwritten: Mtd 29/1/1900
 O.K.H.



Length A to B 167ch. 30lks.

608-3-7
 George Somerville
 Pur.



May be acted upon 25.5.1900

S.P.
 108-01

Handwritten: Drawing to plan 27-1-1900.

148. NEW STAR OF TASMANIA.