

Plan of
 Survey of Water Rights Nos 855 856 857 858 859 860 861 862 863 864 865 866 867 868 869 870 871 872 873 874 875 876 877 878 879 880 881 882 883 884 885 886 887 888 889 890 891 892 893 894 895 896 897 898 899 900 901 902 903 904 905 906 907 908 909 910 911 912 913 914 915 916 917 918 919 920 921 922 923 924 925 926 927 928 929 930 931 932 933 934 935 936 937 938 939 940 941 942 943 944 945 946 947 948 949 950 951 952 953 954 955 956 957 958 959 960 961 962 963 964 965 966 967 968 969 970 971 972 973 974 975 976 977 978 979 980 981 982 983 984 985 986 987 988 989 990 991 992 993 994 995 996 997 998 999 1000

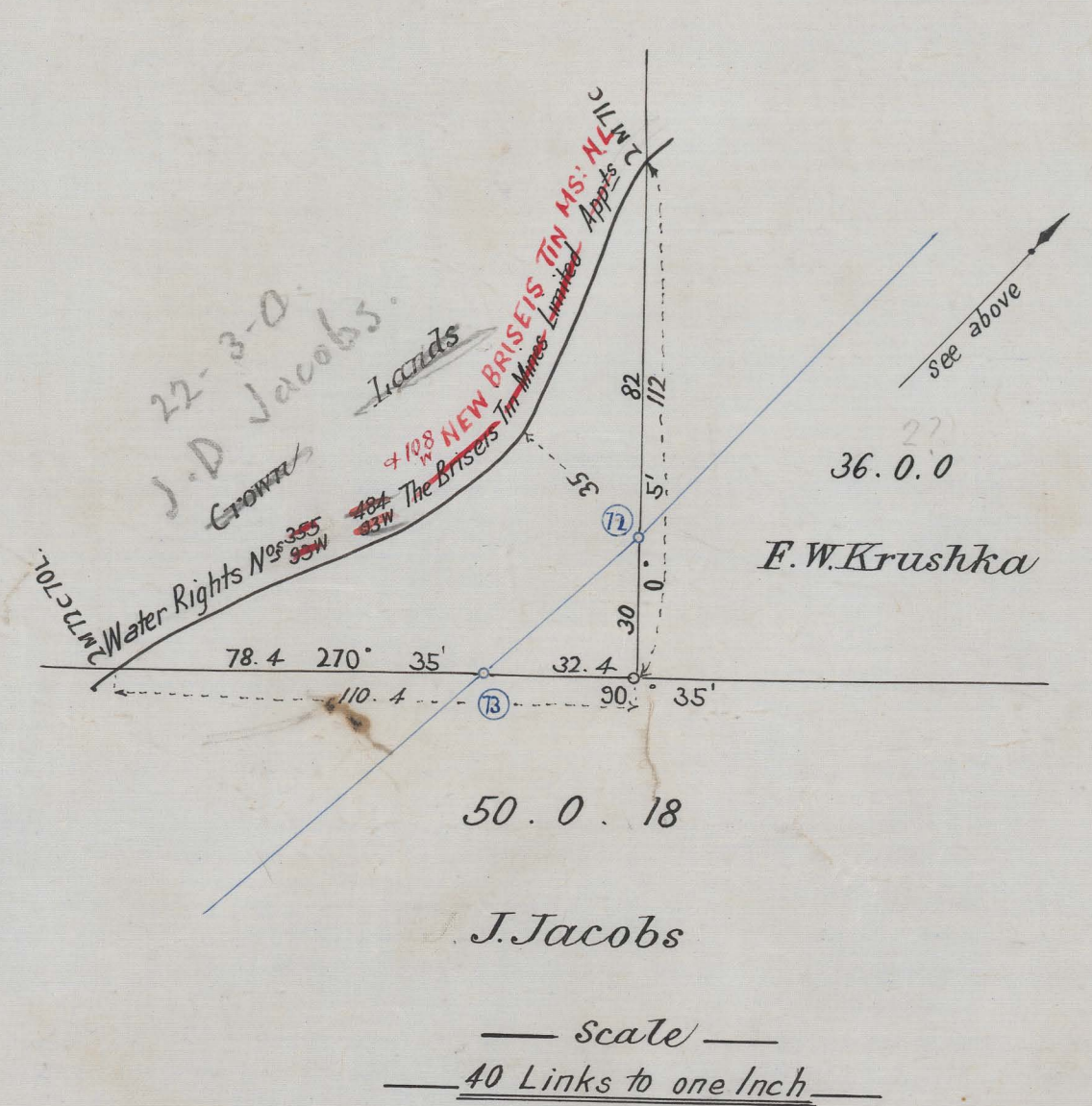
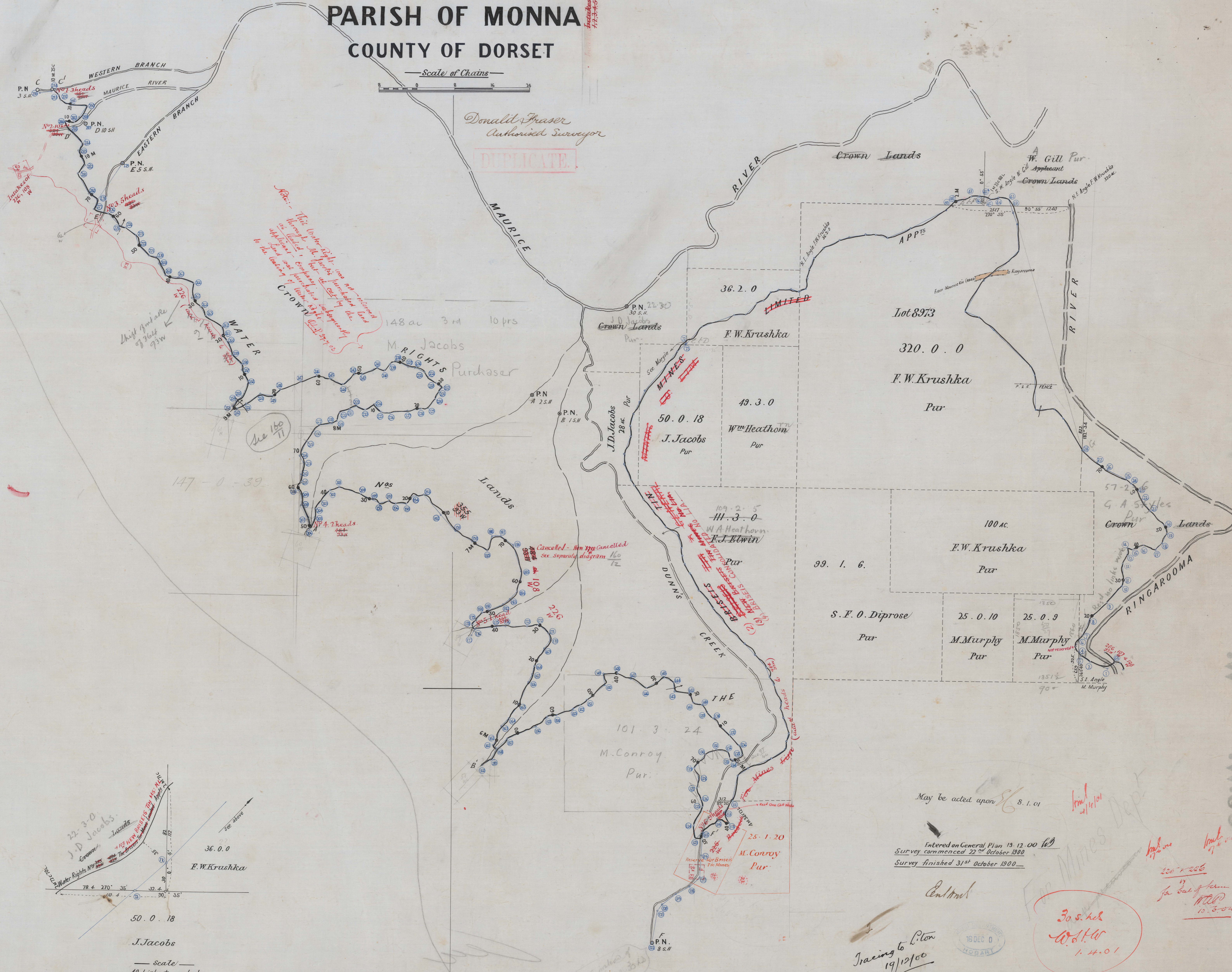
**PARISH OF MONNA
 COUNTY OF DORSET**

Scale of Chains
 0 5 10 15 20

Donald Fraser
 Authorized Surveyor
 DUPLICATE

REFERENCE TO TRAVERSE

NO	BEARING	DIST	NO	BEARING	DIST
58 to 1	226° 55'	208	294 to 295	260° 30'	350
1 to 2	201° 4'	210	295 to 296	260° 30'	172
2 to 3	320° 4'	185	296 to 297	260° 30'	114
3 to 4	328° 38'	85	297 to 298	260° 30'	114
4 to 5	31° 15'	127	298 to 299	260° 30'	254
5 to 6	24° 15'	378	299 to 300	260° 30'	330
6 to 7	46° 5'	502	300 to 301	260° 30'	292
7 to 8	41° 0'	485	301 to 302	260° 30'	190
8 to 9	11° 30'	181	302 to 303	260° 30'	145
9 to 10	158° 36'	332	303 to 304	260° 30'	187
10 to 11	75° 7'	216.5	304 to 305	260° 30'	191
11 to 12	104° 32'	120	305 to 306	260° 30'	380
12 to 13	101° 17'	253	306 to 307	260° 30'	337
13 to 14	45° 53'	201	307 to 308	260° 30'	486
14 to 15	19° 53'	232.5	308 to 309	260° 30'	222
15 to 16	245° 32'	174.5	309 to 310	260° 30'	259
16 to 17	34° 4'	413	310 to 311	260° 30'	222
17 to 18	312° 0'	332.5	311 to 312	260° 30'	315
18 to 19	335° 1'	197	312 to 313	260° 30'	228
19 to 20	320° 5'	201.5	313 to 314	260° 30'	151
20 to 21	308° 15'	228.5	314 to 315	260° 30'	251
21 to 22	354° 35'	193	315 to 316	260° 30'	288
22 to 23	304° 1'	262.5	316 to 317	260° 30'	298
23 to 24	305° 25'	488	317 to 318	260° 30'	168
24 to 25	45° 26'	187	318 to 319	260° 30'	124
25 to 26	44° 47'	364	319 to 320	260° 30'	153
26 to 27	48° 52'	387	320 to 321	260° 30'	285
27 to 28	48° 49'	380	321 to 322	260° 30'	333.5
28 to 29	73° 27'	86	322 to 323	260° 30'	347.5
29 to 30	102° 12'	302	323 to 324	260° 30'	214
30 to 31	102° 12'	302	324 to 325	260° 30'	214
31 to 32	287° 38'	260	325 to 326	260° 30'	429.5
32 to 33	226° 57'	481.5	326 to 327	260° 30'	183.5
33 to 34	164° 11'	428	327 to 328	260° 30'	128
34 to 35	183° 24'	463	328 to 329	260° 30'	328
35 to 36	228° 0'	285	329 to 330	260° 30'	225
36 to 37	240° 50'	327	330 to 331	260° 30'	285
37 to 38	231° 57'	371	331 to 332	260° 30'	268
38 to 39	218° 51'	167	332 to 333	260° 30'	351
39 to 40	188° 46'	435	333 to 334	260° 30'	149.5
40 to 41	227° 27'	153	334 to 335	260° 30'	149.5
41 to 42	345° 34'	266	335 to 336	260° 30'	55
42 to 43	17° 21'	234	336 to 337	260° 30'	265.5
43 to 44	170° 35'	4	337 to 338	260° 30'	455.5
44 to 45	35° 25'	360	338 to 339	260° 30'	362
45 to 46	67° 40'	320.5	339 to 340	260° 30'	285
46 to 47	151° 52'	245	340 to 341	260° 30'	286
47 to 48	157° 18'	141.5	341 to 342	260° 30'	333.5
48 to 49	186° 35'	89	342 to 343	260° 30'	66.5
49 to 50	152° 38'	72.4	343 to 344	260° 30'	66.5
50 to 51	340° 41'	209	344 to 345	260° 30'	171
51 to 52	318° 4'	297.5	345 to 346	260° 30'	161
52 to 53	346° 41'	491	346 to 347	260° 30'	200
53 to 54	346° 29'	193	347 to 348	260° 30'	125
54 to 55	334° 25'	204	348 to 349	260° 30'	126
55 to 56	273° 37'	319	349 to 350	260° 30'	704
56 to 57	144° 30'	27	350 to 351	260° 30'	171
57 to 58	298° 12'	216	351 to 352	260° 30'	114
58 to 59	230° 34'	439.5	352 to 353	260° 30'	170
59 to 60	340° 50'	357.5	353 to 354	260° 30'	288
60 to 61	292° 43'	331.5	354 to 355	260° 30'	169
61 to 62	267° 47'	283.5	355 to 356	260° 30'	285
62 to 63	172° 18'	159	356 to 357	260° 30'	376
63 to 64	225° 52'	481	357 to 358	260° 30'	183
64 to 65	231° 59'	183.5	358 to 359	260° 30'	126
65 to 66	242° 20'	164	359 to 360	260° 30'	107
66 to 67	248° 0'	171	360 to 361	260° 30'	189
67 to 68	253° 11'	193.5	361 to 362	260° 30'	115
68 to 69	223° 30'	319	362 to 363	260° 30'	268.5
69 to 70	245° 45'	645	363 to 364	260° 30'	242
70 to 71	220° 11'	178.5	364 to 365	260° 30'	172
71 to 72	227° 0'	226	365 to 366	260° 30'	328.5
72 to 73	208° 0'	363	366 to 367	260° 30'	185
73 to 74	20° 27'	277	367 to 368	260° 30'	264
74 to 75	15° 36'	186	368 to 369	260° 30'	334
75 to 76	26° 15'	434	369 to 370	260° 30'	211
76 to 77	33° 10'	243	370 to 371	260° 30'	263.5
77 to 78	345° 28'	183	371 to 372	260° 30'	163.5
78 to 79	32° 43'	289	372 to 373	260° 30'	163.5
79 to 80	169° 56'	242	373 to 374	260° 30'	227
80 to 81	259° 32'	448	374 to 375	260° 30'	288.5
81 to 82	165° 10'	191	375 to 376	260° 30'	191
82 to 83	262° 45'	464	376 to 377	260° 30'	488
83 to 84	177° 29'	140	377 to 378	260° 30'	287.5
84 to 85	335° 2'	172	378 to 379	260° 30'	199
85 to 86	42° 2'	174	379 to 380	260° 30'	204
86 to 87	42° 19'	161	380 to 381	260° 30'	154.5
87 to 88	68° 20'	146.5	381 to 382	260° 30'	208.5
88 to 89	65° 34'	323	382 to 383	260° 30'	42
89 to 90	63° 24'	182	383 to 384	260° 30'	221.5
90 to 91	42° 37'	209	384 to 385	260° 30'	457
91 to 92	11° 44'	446	385 to 386	260° 30'	457.5
92 to 93	185° 10'	593	386 to 387	260° 30'	452
93 to 94	187° 30'	8	387 to 388	260° 30'	340.5
94 to 95	257° 21'	181	388 to 389	260° 30'	315
95 to 96	345° 26'	195			
96 to 97	280° 47'	283.5			
97 to 98	267° 35'	188.5			
98 to 99	287° 14'	111.7			



May be acted upon 8.1.01

Entered on General Plan 13.12.00
 Survey commenced 22nd October 1900
 Survey finished 31st October 1900

Tracing to P.ton
 19/10/00

30 s. h. c.
 1.4.01

83.W.88
 484
 108
 B612191
 T. & T. D. W. CO.
 841

149. 484. & 108. BRISEIS T.&G.M.CO.
93.W. W.

184 + 108
33W
seis Tn. Mines Limited
149



COUNTY OF DOBZET
YUKON TERRITORY
SURVEY TO WATER RIGHTS IN
BRANCH OF YUKON RIVER

Station	Reference	Distance	Bearing	Remarks
1	2	3	4	5
100	101	102	103	104
105	106	107	108	109
110	111	112	113	114
115	116	117	118	119
120	121	122	123	124
125	126	127	128	129
130	131	132	133	134
135	136	137	138	139
140	141	142	143	144
145	146	147	148	149
150	151	152	153	154
155	156	157	158	159
160	161	162	163	164
165	166	167	168	169
170	171	172	173	174
175	176	177	178	179
180	181	182	183	184
185	186	187	188	189
190	191	192	193	194
195	196	197	198	199
200	201	202	203	204

