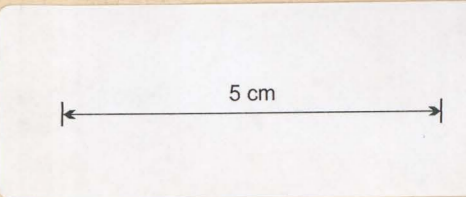


1449M 20ac Pioneer Co.
 commencing at a point on West boundary
 of 858 Pioneer Tin Mining Co. Limited
 Copy of field notes of survey of 858 Deviation
 W

NO INFORMATION TO BE WRITTEN WITHIN THIS SPACE

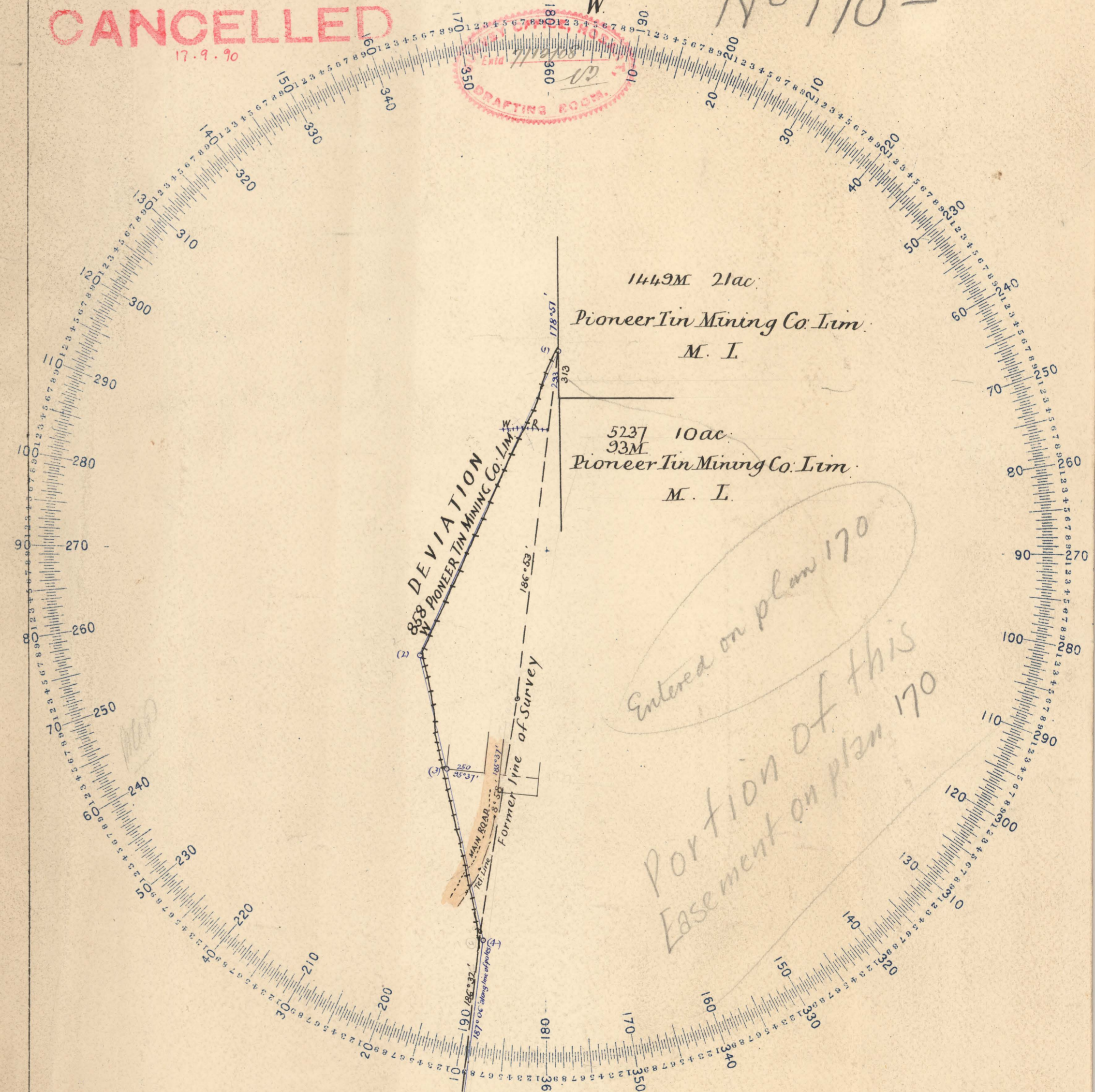
GENERAL
DIAGRAM FROM ACTUAL SURVEY
 COUNTY OF DORSET
 PARISH OF MOORINA.



Scale 6 chains to an inch.

REFERENCE TO CORNERS.			
CORNER	BEARING	DISTANCE IN LINKS	FROM

N^o OF APPLICATION
CANCELLED
 17.9.90
 Deviation of 858 W
 N^o 170 L



To be filled in
 Office examination by Surveyor

Date of instructions 28.8.08
 Survey commenced } 24.11.08
 Survey finished }
 Error of close 1 in
 Plotted by CR 10.12.08
 Finally examined by -DD 14/11/09
 Entered on General Plan by AD 8.12.08

May be acted upon
 Acted upon

Report

Tracing to L. ton
 8/12/08



9. Jan 2.12.08

Donald Fraser
 Auth^r Surveyor

S. P.
 170-03

Derby 1st Dec^r 1908

Report on 858 - Pioneer Tin Mining Company
Limited ^W being deviation of first survey.

1. No part passes over or encroaches upon any land belonging to or occupied by any person other than applicant
2. Part crosses over Main Road from Pioneer to Derby.
Part crosses over Electric telegraph line.
3. As the Electric power line consisting of three copper cables stretched from poles, is now constructed along deviation as shown on plan there is no necessity any longer to reserve the first line through the township lots.
4. I consider 25 links will be a sufficient width to grant.

Donald Fraser
Auth^r of Survey

The Surveyor General
Survey Office
Oxbart