

dis. 1884.5 from St 54 on same St 1
 Heazlewood Road, end of Tramway Survey of
 for The Magnet Silver Mining Co. No Lia. Starting at
 Heazlewood 7th August 1917 Survey of 3 ac. N^o 1761-W

MINERAL SURVEY

DIAGRAM FROM ACTUAL SURVEY

COUNTY OF RUSSELL

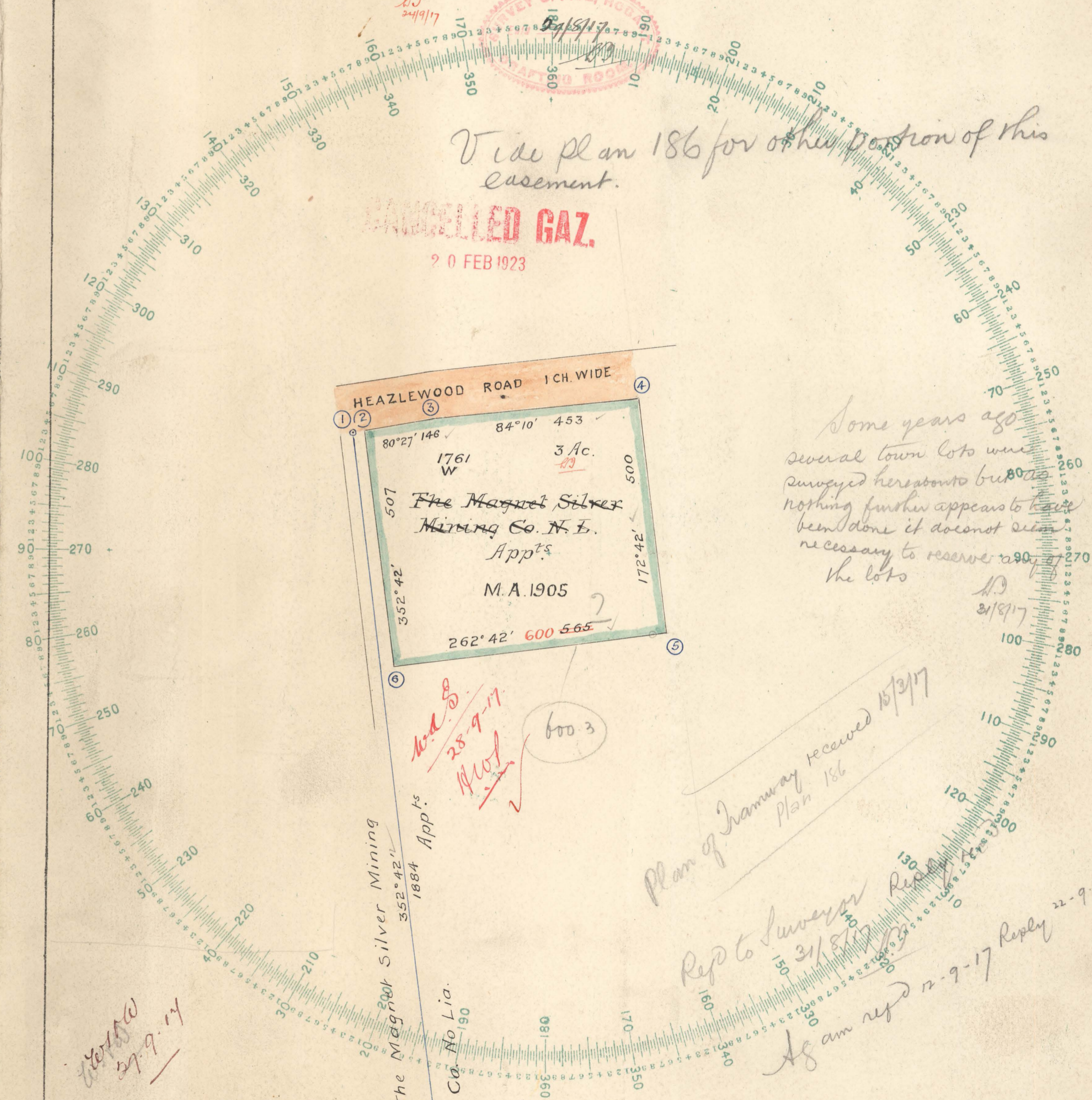
VICINITY OF HEAZLEWOOD

Scale 2 chains to an inch.

REFERENCE TO CORNERS.

CORNER	BEARING	DISTANCE IN LINKS	FROM

NOTE. PERMANENT OFFICE ALTERATIONS AND ADDITIONS SHOWN IN RED



To be filled in
 By Surveyor
 Date of Instructions 5. 3. 17
 Survey commenced 7. 8. 17
 Survey finished 15. 8. 17
 Error of close 1 in 1227
 Plotted by
 Finally examined by 2/10/17
 Entered on General Plan by 30. 8. 17
 Tracing to Launceston 29. 8. 17

Plan of Tramway received 15/3/17
 Rept to Surveyor 31/8/17
 As am resp 12-9-17 Reply 22-9-17

MINES DEPARTMENT
 29 AUG 17
 HOBERT

S.P.
 186-02

NAME *The Magnet S.M. Coy N.L. Victoria.* COUNTY OF *Russell*
 APP. No *1761* PARISH OF *Heazlewood*
W AREA *3 A. D. R. 798.*

No	BEARING	COURSE	LENGTH	LATITUDE		DEPARTURE		TOTALS	DOUBLE LONGITUDES	DOUBLE AREAS	
				NORTH	SOUTH	EAST	WEST			NORTH PRODUCTS	SOUTH PRODUCTS
2	80° 27'	80° 27' NE	146.2	-0.4		144.4		144.4	144.4	0.3756	
3	84 10	84 10 NE	453.6	24.4		451.9		144.4	739.9	34035.4	
4	172 42	7 18 SE	500.6	46.1	146.6	63.6	3.63	144.4	1255.4	623935.8	
5	262 42	82 42 SW	689.3	46.3	595.4	5.95	12.58	144.4	724.1	155241.2	
6	352 42	7 18 NW	504.4	503.3	144.5	64.5	13.19	144.4	64.5	132462.9	168995.3
			2208.1	373.8	572.9	658.9	24.5	144.4	169454.3	304610.5	18441.2
		<i>Error of Close. 1 in 1227.</i>						169.5		7.3	764.8
7	018 180°	S	507.4		507.4			144.4			
	90°	E	606.3			606.3		144.4			
	271 028	N	500.6		500.6			144.4			
	267 045	W	453.6			453.6		144.4			
		S 87 045 W	146.2					144.4			

It is my opinion that the distance from the corner to the center of the road is 17.4 meters. The distance from the corner to the center of the road is 26.2 meters. In addition 35.3 meters to the total 600.3. It was over looked from the look in the distance. I find an Easement for Tramway, the width has been 17.4 meters.

Mr. Rogers

Survey Department

Survey Department

SURVEYOR'S REPORT.

RUSSELL.
 County of *Russell* *HEAZLEWOOD.*
 Scale *2ch^s to an Inch.*
 Vicinity of *Heazlewood* dia: *Survey by D. Jones 1917*
 Name of Applicants *The Magnet S.M. Co N.L. Victoria.*

No. *1761*
W Area *3A OR 7 1/10 P.*

ROAD 1CH WIDE
encroaches upon land occupied
any person other than the Applicants.

3ac. *500*

encroaches upon any public road
connected with Mining. There is

in this Town has been abandoned -

an Easement for Tramway, the width has been
17.4 meters.

(e)

(f)

Remarks

David Jones, Surveyor.
 Date *23. 8. 1917.*

The Surveyor-General,
 Hobart.

SURVEYOR'S REPORT.

County of Russell

Vicinity of Heazlewood

Name of Applicants The Magnet S.M. Co. N.L. Victoria.

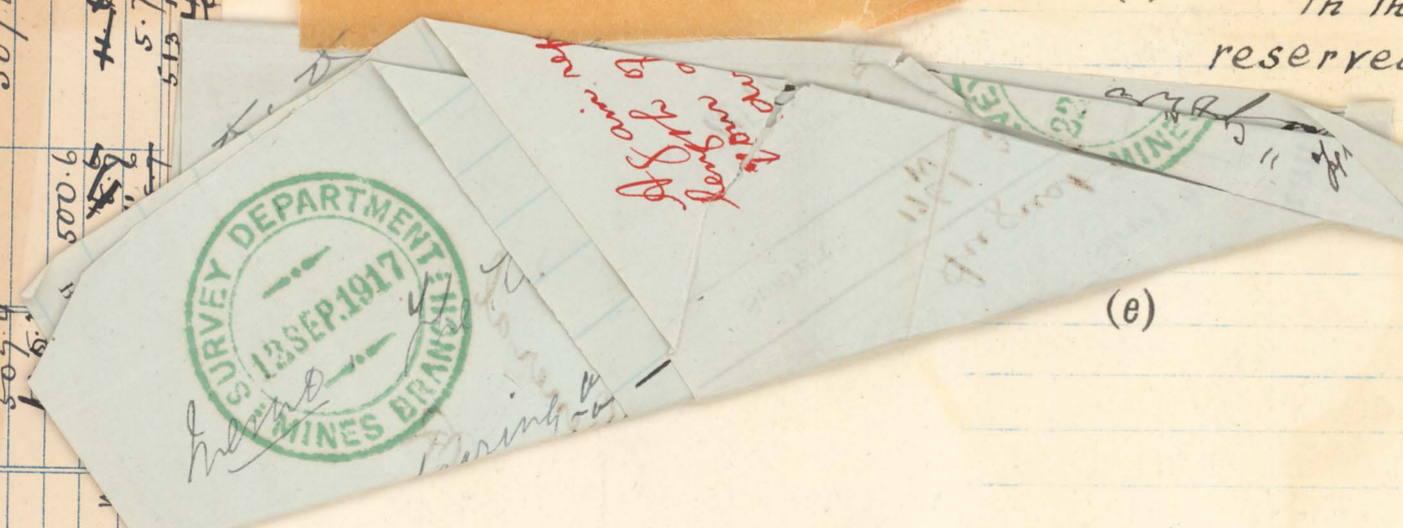
No. 1761
W

Area 3 Ac OR 7⁴/₁₀ P.

COUNTY OF Russell
PARISH OF Heazlewood

NAME The Magnet S.M. Co. N.L. Victoria.
APP: No 1761
W
AREA 3 A. D. R. 1761

No	BEARING	COURSE	LENGTH	LATITUDE		DEPARTURE		TOTALS		DOUBLE LONGITUDES	DOUBLE AREAS
				NORTH	SOUTH	EAST	WEST	LATITUDE	DEPARTURE		
2	80° 27'	80° 27' NE	146.2	-0.4	144.4	144.4	14.4	144.4	14.4	144.4	144.4
3	84° 10'	84° 10' NE	453.6	24.9	151.9	144.4	151.9	151.9	151.9	151.9	151.9
4	172° 42'	7° 18' SE	500.6	46.1	496.6	451.3	46.1	46.1	46.1	46.1	46.1
5	262° 42'	82° 42' W	650.3	76.3	574.3	63.6	76.3	76.3	76.3	76.3	76.3
6	352° 42'	7° 18' NW	507.4	503.3	572.9	659.9	503.3	503.3	503.3	503.3	503.3
				2208.1	573.8	572.9	659.9	572.9	659.9	572.9	659.9
Error of Close Lin. <u>1227</u>											
7	181° 150'	S	507.4		507.4			507.4			
				507.4		507.4		507.4			
				271° 25'							
				267° 45'							



- (a) No part passes over or encroaches upon land occupied by or belonging to any person other than the Applicants.
- (b) No part passes over or encroaches upon any public road or any Water Right, or work connected with Mining. There is however a Pack Track available.
- (c) Any previous occupation in this Town has been abandoned.
- (d) In the case of an Easement for Tramway, the width has been reserved 50 links.

Remarks

David Jones,
Surveyor.

Date 23. 8. 1917.

The Surveyor-General,
Hobart.