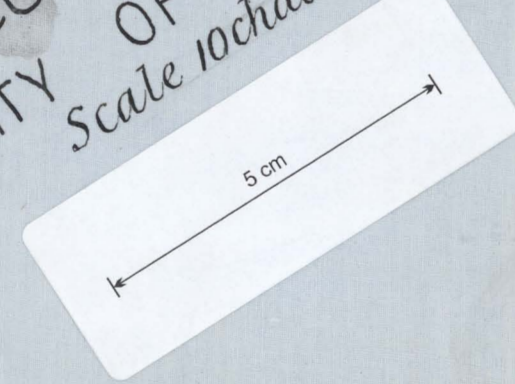


PLAN 189

Water Right No 2808
 Late 2733 W Plan 189
 CANCELLED
 29-14-32

COUNTY OF DORSET
 VICINITY OF CASCADE RIVER
 Scale 10 chains to one inch



Original surveys by G.C. Smith in 1920 & D. Fraser in 1929
 Traced from working plan
 May be acted upon 19/1/32
 Acted upon.

Traced by D. Fraser
 Finally examined by
 Tracing to Lancaster 26.1.32
 Entered on General Plan 1/4

MS
 19.1.32

MS
 19.2.32

MS
 19.2.32

