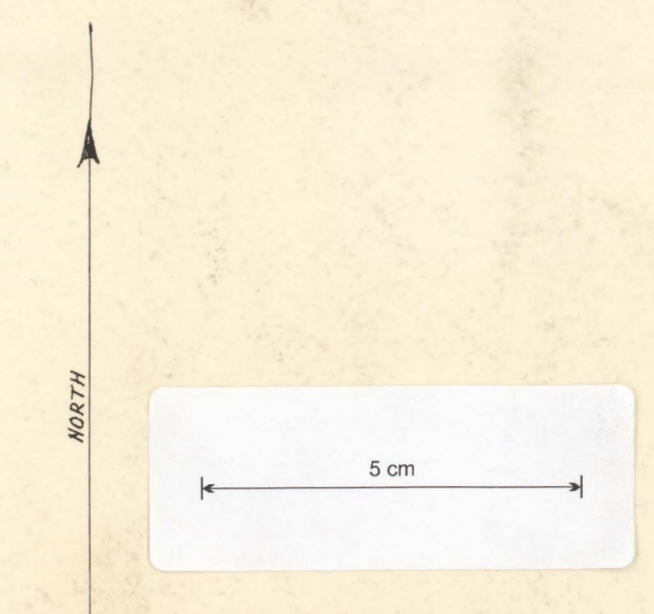


# DORSET VICINITY OF BELL'S HILL.

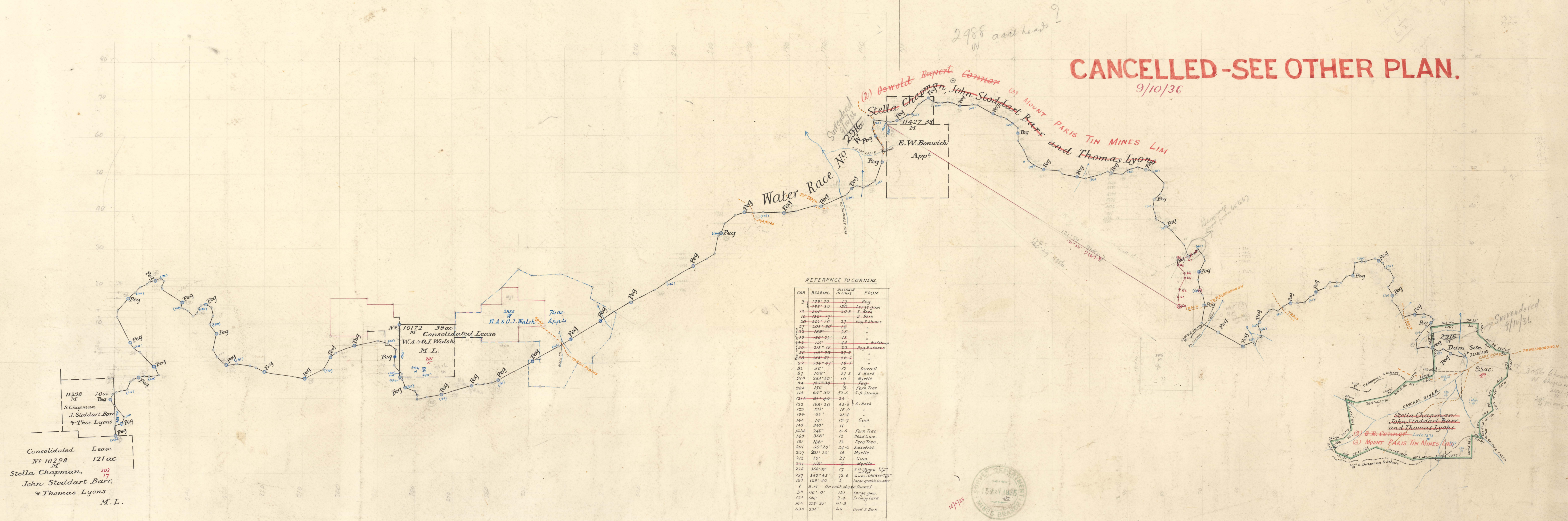
SCALE 10 CH<sup>MS</sup> TO ONE INCH

*Since the lease was issued upon this survey the applicants have applied for a consolidation of the lease which will cover the whole part of the survey area.*

197  
1



**CANCELLED-SEE OTHER PLAN.**  
9/10/36



11398 20ac  
S. Chapman  
J. Stoddart Barr  
Thomas Lyons  
M.L.

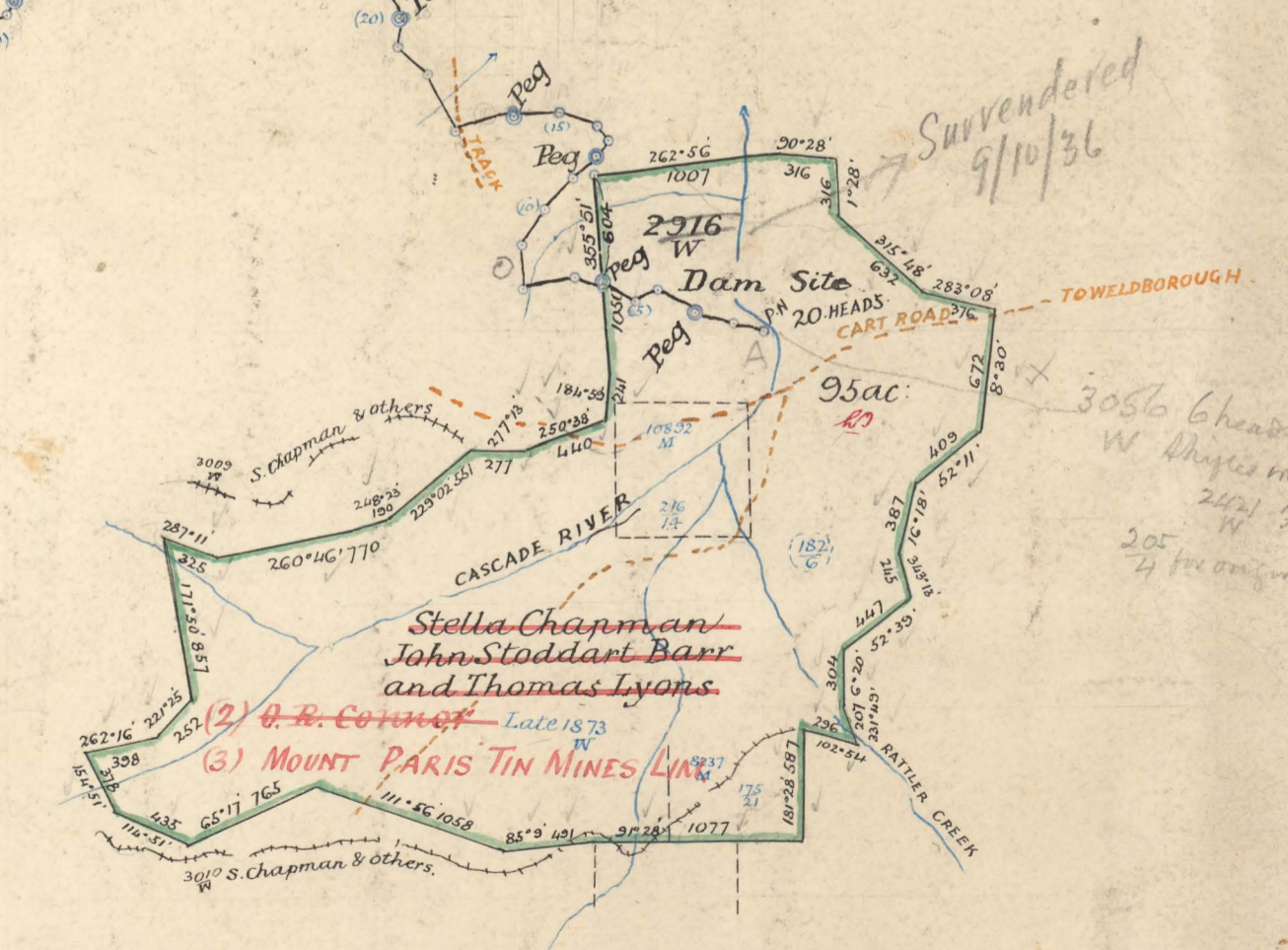
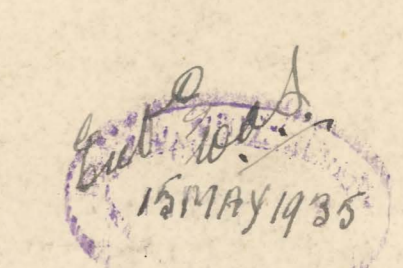
Consolidated Lease  
No 10298 121ac  
Stella Chapman,  
John Stoddart Barr,  
Thomas Lyons  
M.L.

REFERENCE TO CORNERS

CDR	BEARING	DISTANCE	FROM
3	108° 30'	17	Peg
4	148° 30'	120	Large gum
5	108° 30'	30	S. Bark
16	108° 30'	17	S. Bark
20	108° 30'	32	Large gum
27	108° 30'	16	"
28	108° 30'	24	"
30	108° 30'	16	"
31	108° 30'	16	"
32	108° 30'	16	"
33	108° 30'	16	"
34	108° 30'	16	"
35	108° 30'	16	"
36	108° 30'	16	"
37	108° 30'	16	"
38	108° 30'	16	"
39	108° 30'	16	"
40	108° 30'	16	"
41	108° 30'	16	"
42	108° 30'	16	"
43	108° 30'	16	"
44	108° 30'	16	"
45	108° 30'	16	"
46	108° 30'	16	"
47	108° 30'	16	"
48	108° 30'	16	"
49	108° 30'	16	"
50	108° 30'	16	"
51	108° 30'	16	"
52	108° 30'	16	"
53	108° 30'	16	"
54	108° 30'	16	"
55	108° 30'	16	"
56	108° 30'	16	"
57	108° 30'	16	"
58	108° 30'	16	"
59	108° 30'	16	"
60	108° 30'	16	"
61	108° 30'	16	"
62	108° 30'	16	"
63	108° 30'	16	"
64	108° 30'	16	"
65	108° 30'	16	"
66	108° 30'	16	"
67	108° 30'	16	"
68	108° 30'	16	"
69	108° 30'	16	"
70	108° 30'	16	"
71	108° 30'	16	"
72	108° 30'	16	"
73	108° 30'	16	"
74	108° 30'	16	"
75	108° 30'	16	"
76	108° 30'	16	"
77	108° 30'	16	"
78	108° 30'	16	"
79	108° 30'	16	"
80	108° 30'	16	"
81	108° 30'	16	"
82	108° 30'	16	"
83	108° 30'	16	"
84	108° 30'	16	"
85	108° 30'	16	"
86	108° 30'	16	"
87	108° 30'	16	"
88	108° 30'	16	"
89	108° 30'	16	"
90	108° 30'	16	"
91	108° 30'	16	"
92	108° 30'	16	"
93	108° 30'	16	"
94	108° 30'	16	"
95	108° 30'	16	"
96	108° 30'	16	"
97	108° 30'	16	"
98	108° 30'	16	"
99	108° 30'	16	"
100	108° 30'	16	"

Date of instruction 1. 5. 1934  
Survey commenced 10. 1. 1935  
Finished 4. 5. 1935  
Plotted by [unclear]  
Finally examined 23 10/35  
Entered on General Plan 17-5-35  
Tracing to Lancaster 17-5-35

Donald Fraser  
District Surveyor



May be acted upon 10. 5. 35  
Acted upon 10. 5. 35

