

COUNTY OF KENT VICINITY OF SOUTHPORT

Scale: 5 chains to an inch

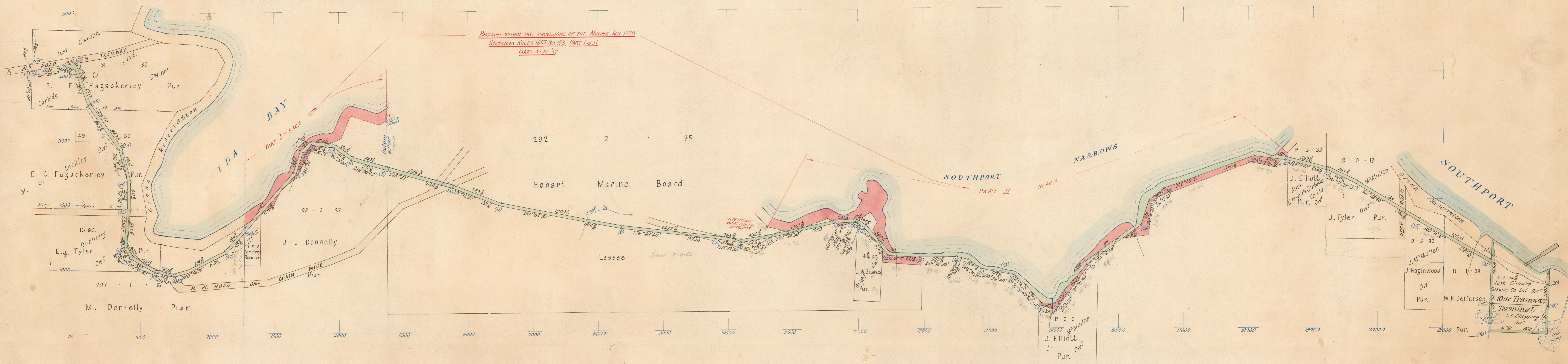
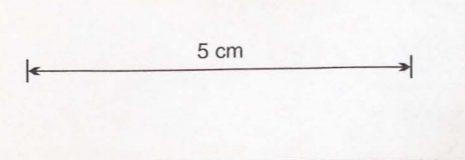
$\frac{6W}{50}$ TRAMWAY EASEMENT $\frac{1}{2}$ CHN. WIDE & 10 AC. TERMINAL

(1) AUSTRALIAN COMMONWEALTH CARBIDE CO. LTD. APPTS.

Ref. 250/21 Area 26 Ac.

2. CONSOLIDATED GOLDFIELDS AUSTR. LTD. & SOUTHERN ALLOYS VENTURE P/L.

3. BENDERS SPREADING SERVICES (1964) P/L.



Plotted by *R.H. 10.6.53*
Finally Examined by *R.H. 10.4.53*
Entered on Gen. Plan by *R.H. 5.11.53*
Photostat to Launceston (Dig. Theobald 210-52)

May be acted upon
Acted upon

Plan drawn in office from survey
by E. M. Lilley in 1951

KEVIN TEE
BRAND

200

6W
50

AUSTRALIAN
TRAMWAY EASEMENT - C^YWEALTH CARBIDE CO. LTD.