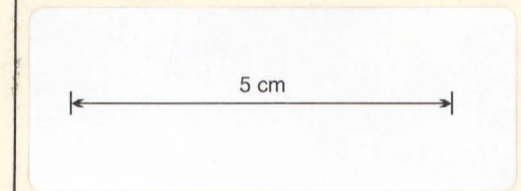
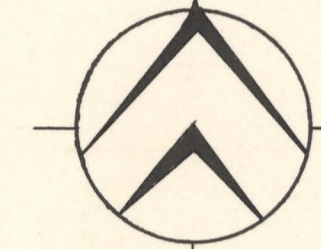
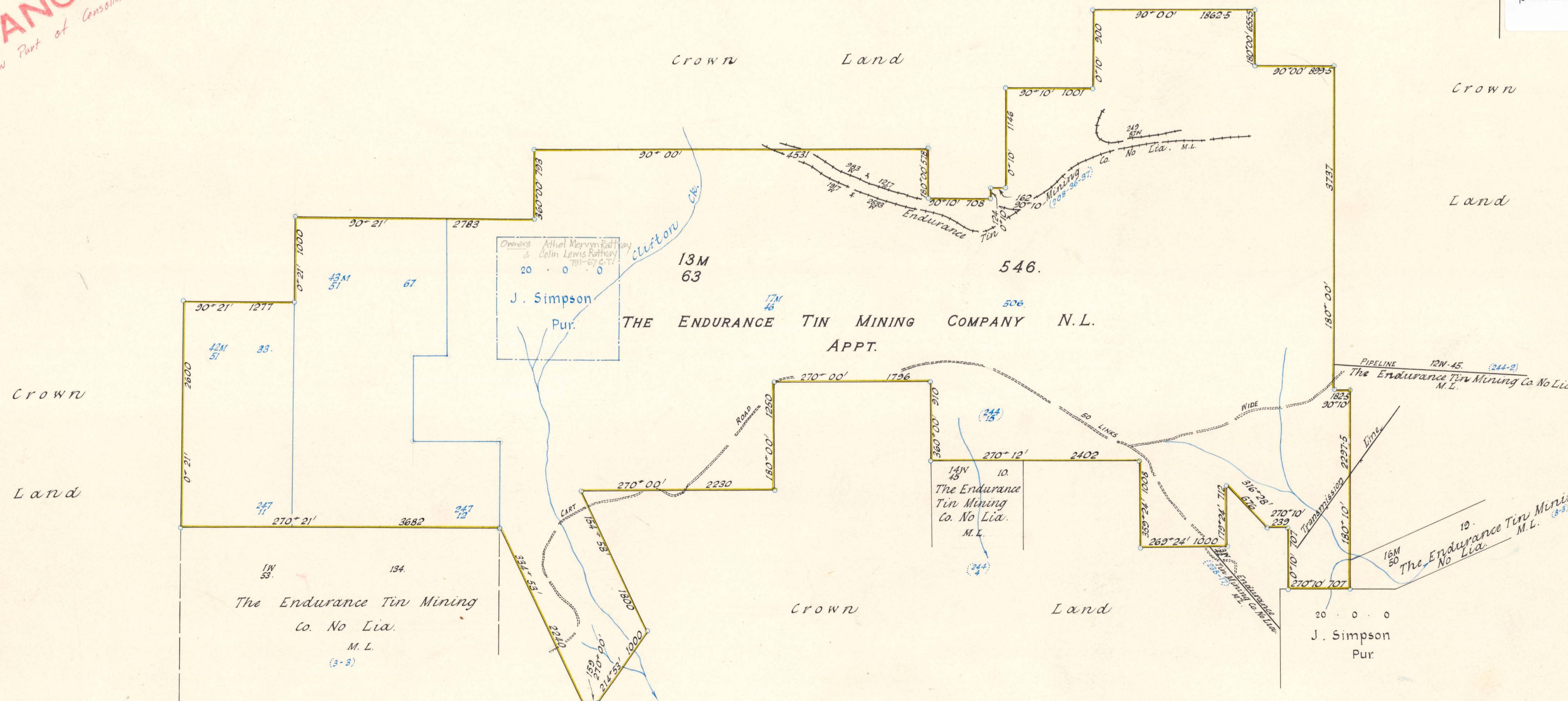


COUNTY OF DORSET, VICINITY OF STH. MT. CAMERON.

SCALE - 8 CHAINS TO AN INCH.



CANCELLED
Now Part of Consolidated lease 23M
66



Plotted by ~ 10-5-1963
Entered on General Plan by ~ 14-5-1963
Finally Examined by ~ 16-5-63

Compiled and Drawn in Office
from Original Surveys

APPROVED
[Signature]
DIRECTOR OF MINES 10/5/63

DEPARTMENT OF MINES
17 MAY 1963
[Signature]
H. GARDNER

May be Acted Upon 28-5-63
Acted Upon